

Flat 9 Abi Clay Court, BS2 9RF

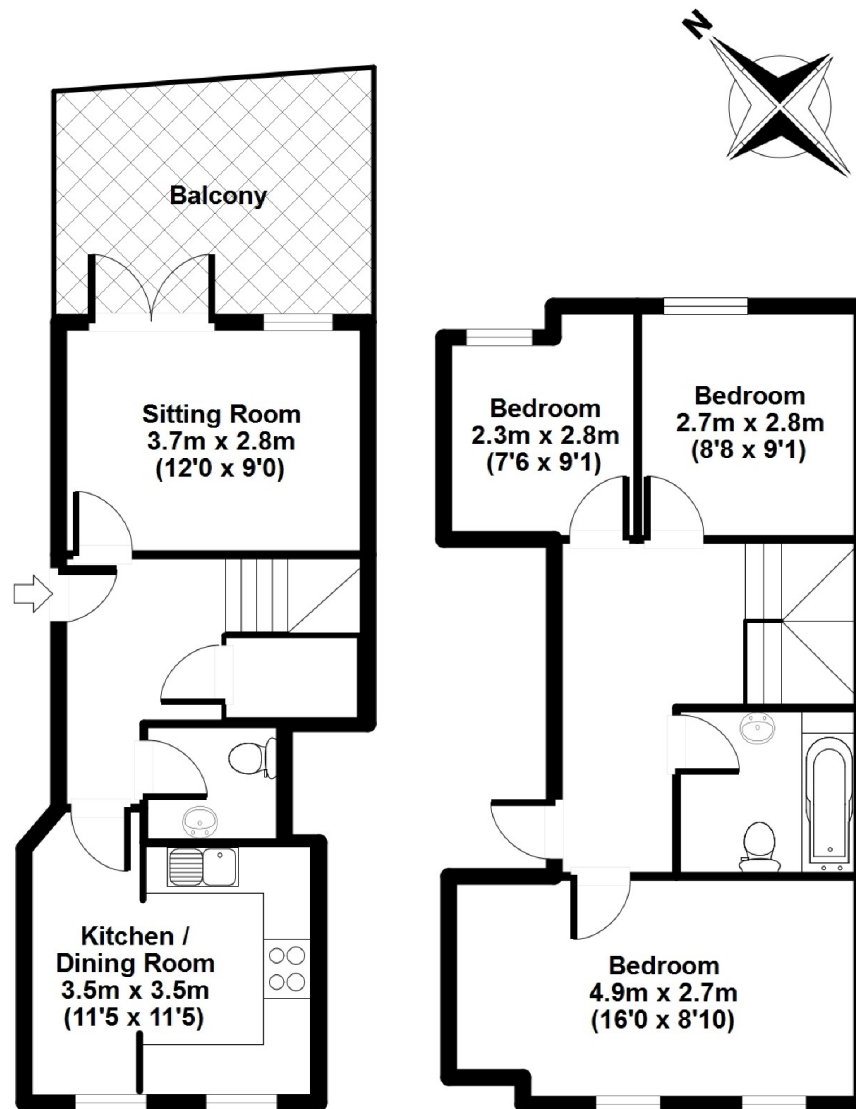
St Werburghs



Offered to the market with a complete chain. A spacious three bedroom apartment located in the popular St Werburghs area with the amazing bonus of a private roof terrace. This position is popular due to it being a short walk to the café's and restaurants of Mina Road, Mina park and a local primary school. The popular city farm is just a short walk away. The layout works very well, a kitchen/diner can be found at the front of the property. A generous living space leads out onto the sunny terrace, a downstairs toilet completes this level. Onwards there are three bedrooms and a family bathroom all accessed from a well-proportioned central landing. This property would make a wonderful first purchase due to it's lovely condition and great location.



APPROX GROSS INTERNAL FLOOR AREA: 785 sq. ft / 73 sq. m





St Werburghs - Asking price £325,000

3 Bed Maisonette

References to the Tenure of a Property are based on information supplied by the Seller. The Agent has not had sight of the title documents. Lease details, service ground rent (where applicable) are given as a guide only and should be checked and confirmed by your solicitor prior to exchange of contracts.



Bishopston Branch

201 Gloucester Road, Bishopston, Bristol, BS7 8BG

Call: 0117 9425855

Mail: bishopstonsales@oceanhome.co.uk

Search: www.oceanhome.co.uk