



37 Bridge Quay, BS1 6QP

Redcliff Street



Stunning third floor two bedroom waterside apartment with secure allocated parking and private west facing balcony with a superb outlook over the harbourside.

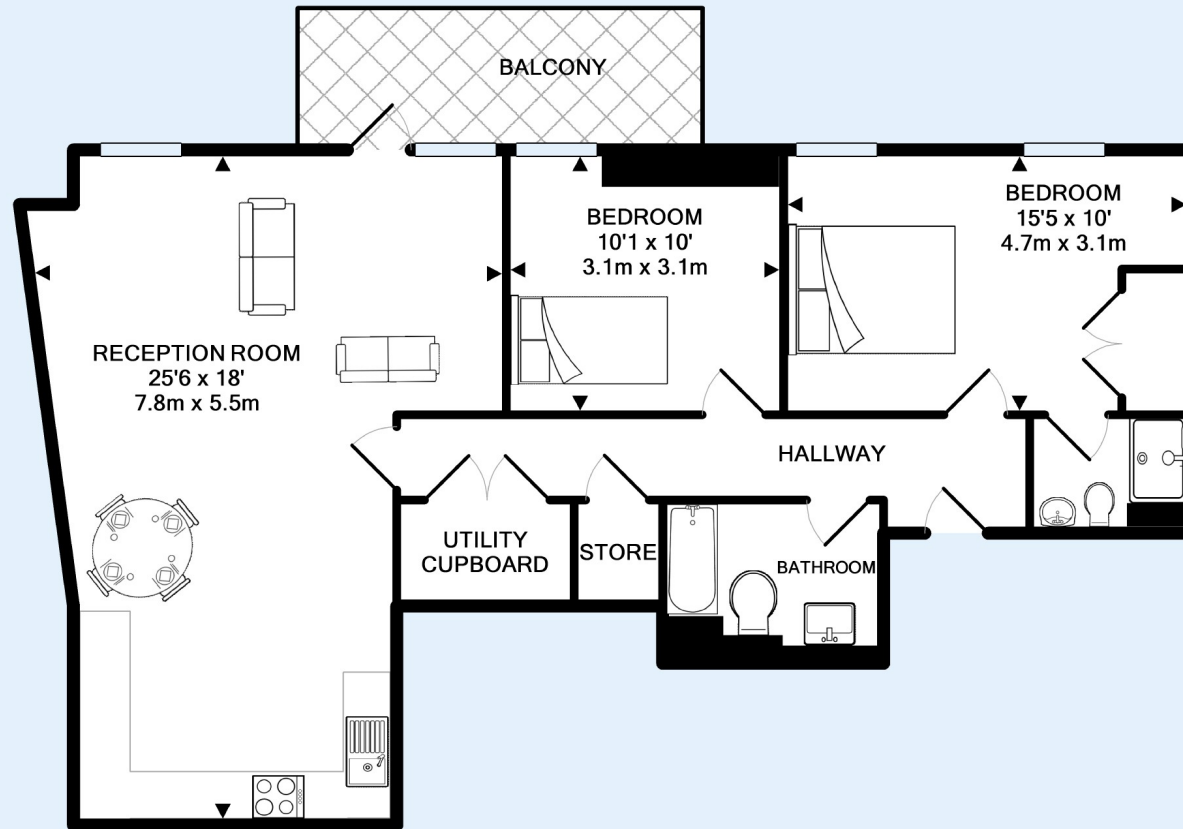
Beautifully finished with a contemporary design, this spacious and well balanced flat is perfectly located in the heart of the city within easy reach of Bristol Temple Meads as well as having Castle Park and all of the delights of the city on the doorstep.

The generous living area is light and open with a sleek modern kitchen, dining area and floor to ceiling windows. A door leads on to a private balcony allowing you to admire the picture-postcard river views and soak up the atmosphere of the city. Both the bathroom and en-suite are stylish and fitted with Porcelanosa suites, fittings and tiles.

No chain.

- Luxurious waterside apartment in the heart of the city
- Secure underground parking
- Two double bedrooms and two bathrooms
- Private balcony with water views
- Lift service
- Tenure - Leasehold
- Energy rating - B
- Circa 861 sqft (taken from EPC)
-







Redcliff Street - Guide price £500,000

2 Bed Flat

References to the Tenure of a Property are based on information supplied by the Seller. The Agent has not had sight of the title documents. Lease details, service ground rent (where applicable) are given as a guide only and should be checked and confirmed by your solicitor prior to exchange of contracts.



Clifton Branch
187 Whiteladies Road, Clifton, Bristol, BS8 2RY

Call: 0117 9466007
Mail: cliftonsales@oceanhome.co.uk
Search: www.oceanhome.co.uk