



Old Market Street, BS2 0EU

Old Market



Built as almshouses in the early part of the 19th Century, Barstaple House is now an elegant grade II* listed development of modern apartments ideally located for the City Centre and Bristol Temple Meads train station.

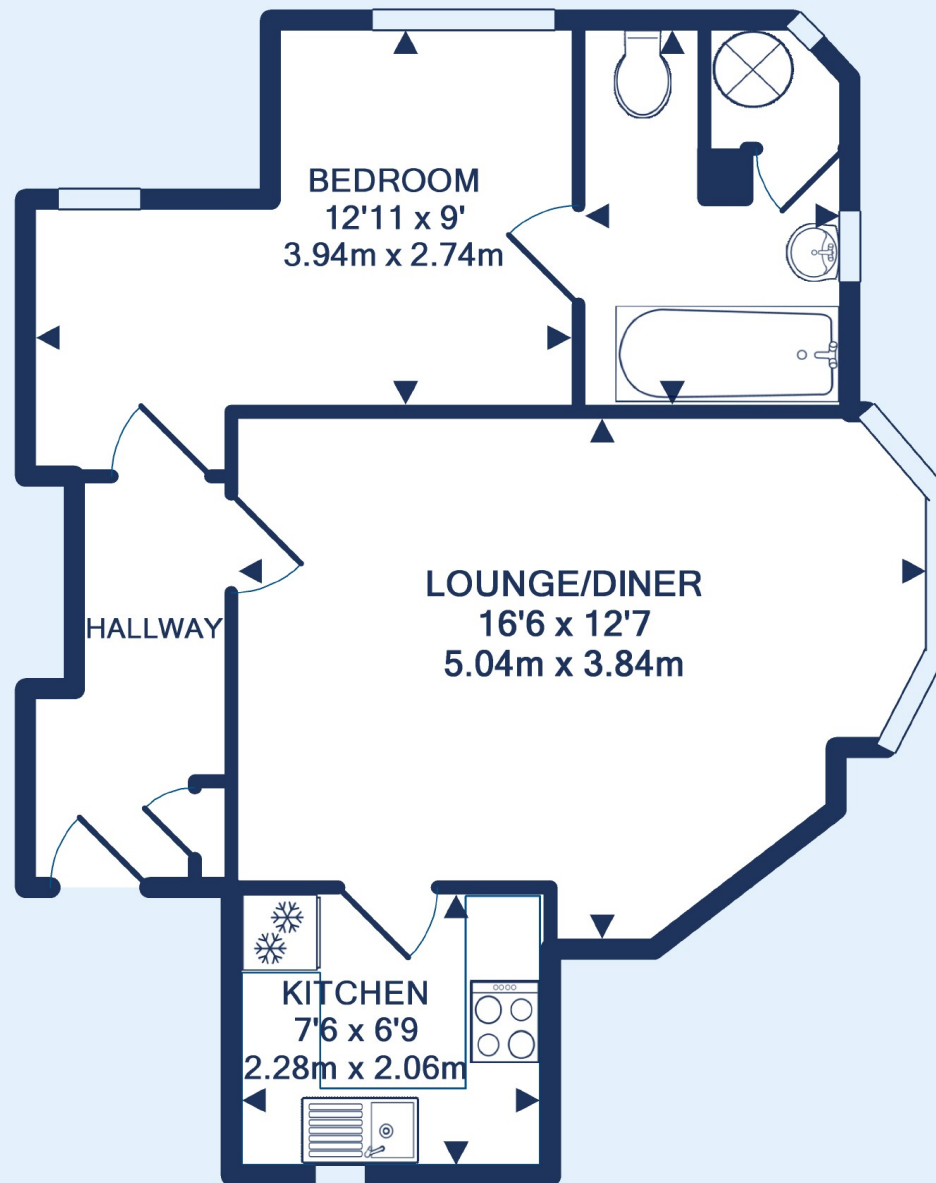
This spacious 1 bedroom ground floor flat has a private entrance, 9ft10 high ceilings, attractive communal gardens.

The accommodation is brimming with period features, offering: spacious entrance hall, bedroom with arched windows and secondary glazing, large en suite with white suite and airing cupboard, 16'6 x 12'7 lounge/diner with bay window, attractive separate kitchen.

This property will suit a variety of buyers and should be viewed at your earliest convenience.

- Barstaple House • Grade II* listed building • Ground floor flat • Private entrance • Central location • One bedroom • Attractive communal gardens • EPC - G • floor - 42m2(from EPC) •







Old Market - Offers in excess of £185,000

1 Bed Flat

References to the Tenure of a Property are based on information supplied by the Seller. The Agent has not had sight of the title documents. Lease details, service ground rent (where applicable) are given as a guide only and should be checked and confirmed by your solicitor prior to exchange of contracts.



Clifton Branch
187 Whiteladies Road, Clifton, Bristol, BS8 2RY

Call: 0117 9466007

Mail: cliftonsales@oceanhome.co.uk

Search: www.oceanhome.co.uk