



SYMON SMITH

RESIDENTIAL & COMMERCIAL ESTATE AGENTS
AND PROPERTY MANAGEMENT

240 Stamford Hill, London, N16 6TT

Sales: 020 8802 0025
sales@symonsmith.co.uk
Management: 020 8802 0022
management@symonsmith.co.uk



Flat 1, Mayfield House Northfield Road, London, N16 5RU

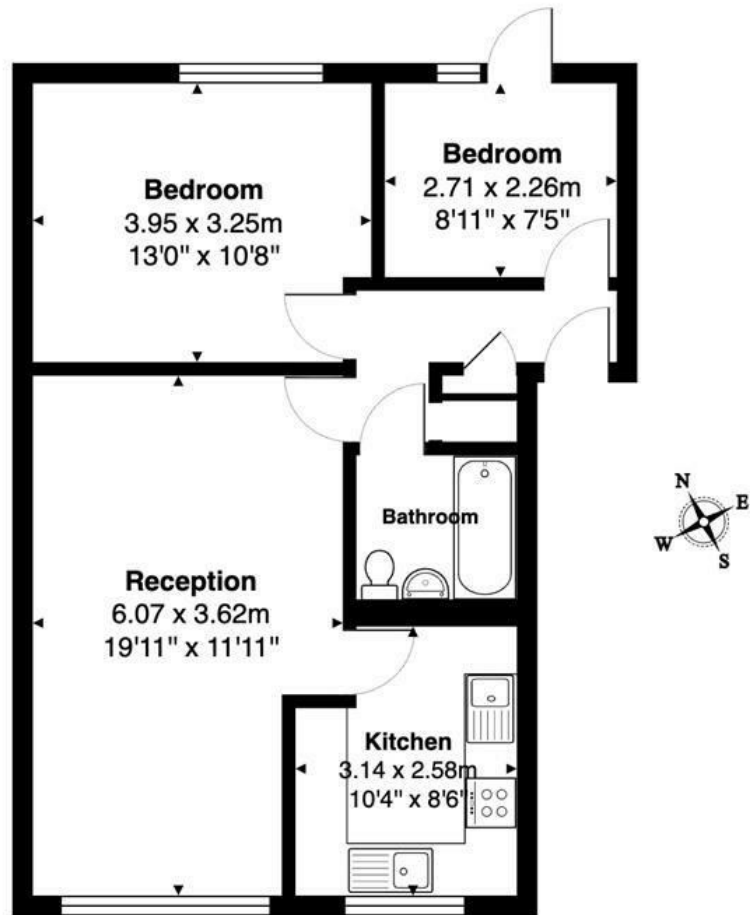
Asking Price £450,000

Symon Smith are pleased to offer for sale this well presented two bedroom apartment set on the Ground Floor floor of a purpose built development, located in the heart of Stamford Hill, The property consists of an open plan lounge, fitted kosher kitchen, tiled bathroom/wc, two good size bedrooms.

Transport links include Stamford Hill Station (Overground), Seven Sisters Station (Victoria Line and National Rail) and a variety of Bus routes into The City & West End.

- | | | |
|-------------------------|---------------------|----------------|
| ■ Leasehold | ■ Ground Floor Flat | ■ Two Bedrooms |
| ■ Fitted Kosher Kitchen | ■ Lounge | ■ Bathroom/wc |
| ■ Council Tax Band - C | ■ EPC Rating - D | |

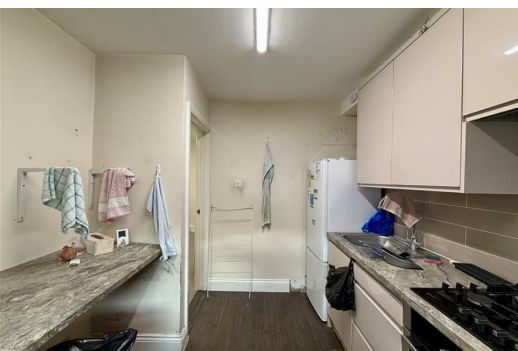
Mayfield House, Northfield Road, London, N16 5RU



Ground Floor

Total Area: 57.4 m² ... 618 ft²

All measurements are approximate and for display purposes only.



WWW.SYMONSMITH.CO.UK