



SYMON SMITH

RESIDENTIAL & COMMERCIAL ESTATE AGENTS
AND PROPERTY MANAGEMENT

240 Stamford Hill, London, N16 6TT

Sales: 020 8802 0025
sales@symonsmith.co.uk
Management: 020 8802 0022
management@symonsmith.co.uk



Flat 1 Broad Lane, London, N15 4QR

Asking Price £360,000

Welcome to this charming ground floor apartment. This well-presented apartment offers a comfortable living space of 519 square feet, making it an ideal choice for individuals or couples seeking a modern home.

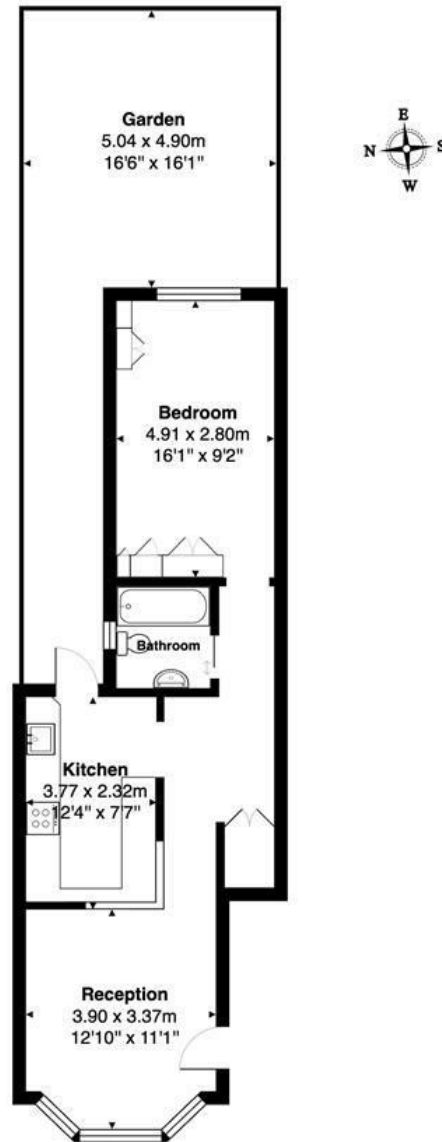
The property features a spacious reception room that provides a warm and inviting atmosphere, perfect for relaxation or entertaining guests. The bedroom is thoughtfully designed to ensure a peaceful retreat, while the bathroom is equipped with contemporary fixtures for your convenience.

One of the standout features of this flat is the delightful garden, which offers a private outdoor space to enjoy fresh air and sunshine. The property also benefits from a share of the freehold, accompanied by a long lease, providing added security and peace of mind for future homeowners.

The kitchen is fitted with Bosch integrated appliances, ensuring that you have all the modern conveniences at your fingertips. Whether you are a culinary enthusiast or simply enjoy the ease of meal preparation, this kitchen is sure to meet your needs.

- Well Presented One Double Bedroom Apartment
- Private Garden
- EPC Rating C
- Ground Floor
- Bosch integrated Appliances
- Council Tax Band Haringey B
- Share of Freehold
- Excellent Transport Links

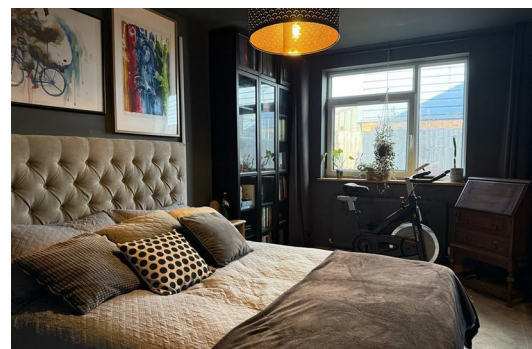
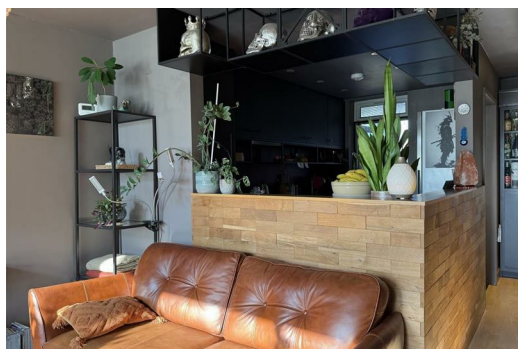
Esin Court, Broad Lane, Tottenham, London N15 4QR



Ground Floor

Total Area: 48.2 m² ... 519 ft²

All measurements are approximate and for display purposes only.



WWW.SYMONSMITH.CO.UK

Symon Smith Ltd, registered in England 110 Lancaster Road, New Barnet, Herts EN4 8AL No. 3600107 VAT No. 247 764 331