



SYMON SMITH

RESIDENTIAL & COMMERCIAL ESTATE AGENTS
AND PROPERTY MANAGEMENT

240 Stamford Hill, London, N16 6TT

Sales: 020 8802 0025
sales@symonsmith.co.uk
Management: 020 8802 0022
management@symonsmith.co.uk



3 Wakefield Road, London, N15, N15 4NN

£875,000

Perfectly positioned in the highly sought-after area of Wakefield Road, Tottenham, this rare and unique corner plot house presents an exceptional opportunity for those seeking a comfortable family home. Boasting three well-proportioned bedrooms, this property is perfect for families or individuals looking for extra space.

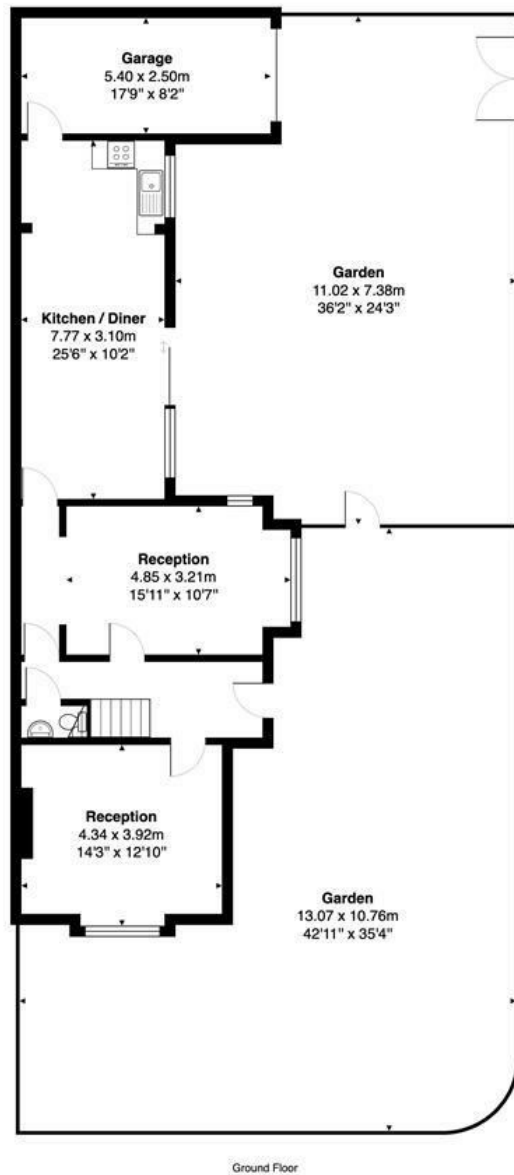
Upon entering, you will find two inviting reception rooms that offer versatility for both relaxation and entertaining. The ground floor also features a convenient downstairs WC, enhancing the practicality of the living space. The first-floor bathroom is well-appointed, ensuring that all family members have access to essential amenities.

One of the standout features of this property is the off-street parking, which is a valuable asset in this bustling area. Additionally, the garage provides further storage options or the potential for a workshop, catering to various lifestyle needs.

The location is particularly appealing, being in close proximity to the vibrant High Road, where you can find a plethora of shops, cafes, and local amenities. For those who enjoy the outdoors, Markfield Park is just a stone's throw away, offering green spaces for leisure and recreation.

- Three Bedrooms
- First Floor Bathroom
- Council Tax London Borough of Haringey Band E
- Two Reception Rooms
- Ground Floor W/C
- EPC TBC
- Kitchen/Diner
- Garage & Off Street Parking
- Freehold

Wakefield Road London N15 4NN



Total Area: 111.0 m² ... 1195 ft² (excluding garage)
All measurements are approximate and for display purposes only.



WWW.SYMONSMITH.CO.UK

Symon Smith Ltd, registered in England 110 Lancaster Road, New Barnet, Herts EN4 8AL No. 3600107 VAT No. 247 764 331