



SYMON SMITH

RESIDENTIAL & COMMERCIAL ESTATE AGENTS
AND PROPERTY MANAGEMENT

240 Stamford Hill, London, N16 6TT

Sales: 020 8802 0025
sales@symonsmith.co.uk
Management: 020 8802 0022
management@symonsmith.co.uk



1 Lucerne Close, London, N13 4QJ

£510,000

Welcome to this delightful ground floor flat located on the highly sought-after Lucerne Close in London. This airy two double bedroom apartment offers a perfect blend of comfort and convenience, making it an ideal choice for both families and professionals alike.

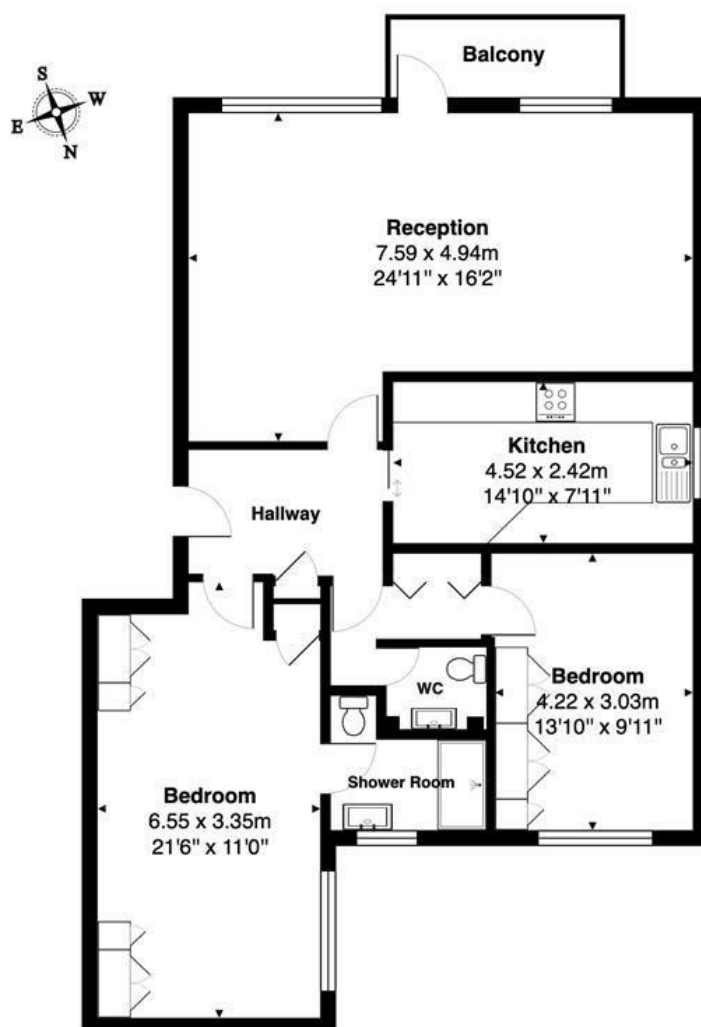
As you step inside, you'll be welcomed by a spacious living room, perfect for both relaxation and entertaining. The flat features a kitchen, an en-suite bathroom for added privacy and convenience, and a separate WC. The share of freehold arrangement enhances the sense of ownership and community, making this property even more desirable.

One of the standout features of this apartment is its prime location. Situated directly opposite Broomfield Park, residents can enjoy the beauty of nature right at their doorstep. The area is also home to a variety of local cafes and coffee shops, perfect for leisurely mornings or catching up with friends. For your everyday needs, nearby supermarkets are just a short stroll away, ensuring that all your shopping requirements are easily met.

Additionally, Palmers Green station is within walking distance, providing excellent transport links to central London and beyond. This makes commuting a breeze, whether for work or leisure.

- Ground Floor
- Spacious Living Room
- EPC rating D
- Two Double Bedrooms
- Garage
- Council Tax London Borough of Enfield Band E
- One bedroom with an en-suite
- Share Of Freehold

Lucerne Close, Palmers Green, N13 4QJ



Ground Floor

Total Area: 95.8 m² ... 1031 ft² (excluding balcony)

All measurements are approximate and for display purposes only.



WWW.SYMONSMITH.CO.UK

Symon Smith Ltd, registered in England 110 Lancaster Road, New Barnet, Herts EN4 8AL No. 3600107 VAT No. 247 764 331