



EDEN MIDCALF  
— SALES & LETTINGS —

£230,000

Kinlet, DY12 3HS



## PROPERTY SUMMARY

A beautifully appointed two bedroom 12 month holiday lodge delightfully situated in the small village of Button Bridge in the Wyre Forest, just over 4 miles outside Bewdley. The property is under 10 years old and forms part of a sought after over 50s development. The layout is generously proportioned and "ready to move into", including a fantastic open-plan lounge/dining kitchen with French doors to a front terrace. The lodge includes off-road parking for 3 cars and is surrounded by attractively landscaped gardens.

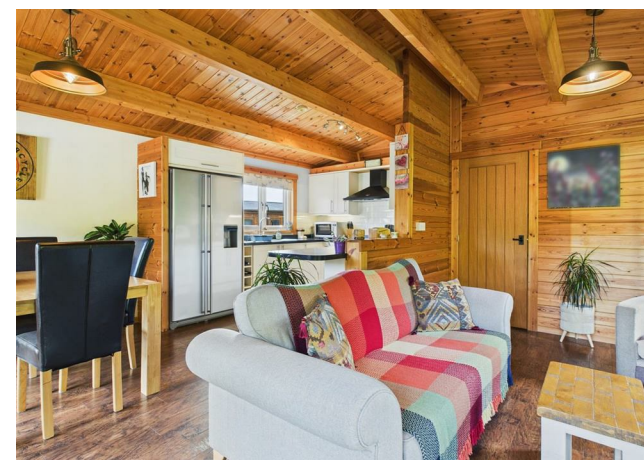
2



1



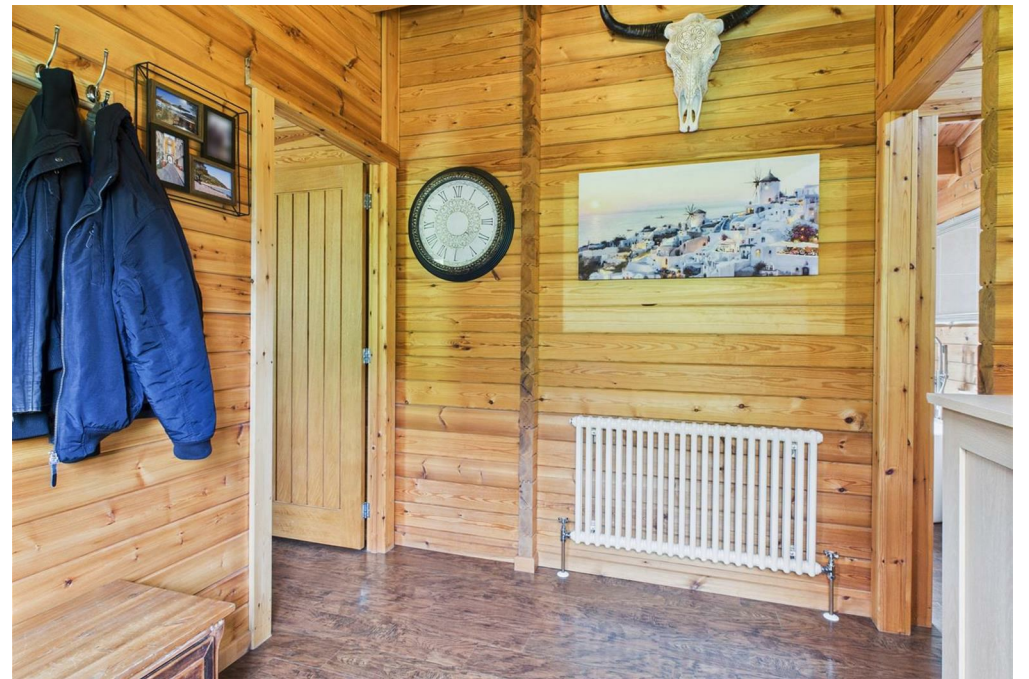
1



















**LOCAL AUTHORITY**  
Wyre Forest District Council

**TENURE**  
Leasehold

**COUNCIL TAX BAND**  
A

**VIEWINGS**  
By prior appointment only

Energy Efficiency Rating		
	Current	Potential
Very energy efficient - lower running costs		
(92 plus) <b>A</b>		
(81-91) <b>B</b>		
(69-80) <b>C</b>		
(55-68) <b>D</b>		
(39-54) <b>E</b>		
(21-38) <b>F</b>		
(1-20) <b>G</b>		
Not energy efficient - higher running costs		
<b>England &amp; Wales</b>		EU Directive 2002/91/EC

Agents Note: Whilst every care has been taken to prepare these particulars, they are for guidance purposes only. All measurements are approximate and are for general guidance purposes only and whilst every care has been taken to ensure their accuracy, they should not be relied upon and potential buyers/tenants are advised to recheck the measurements

**EDEN MIDCALF**  
SALES & LETTINGS

5 Load Street  
Bewdley  
DY12 2AF

01299 402392  
wyreforest@edenmidcalf.co.uk  
<https://www.edenmidcalf.co.uk/contact-us/>