



EDEN MIDCALF
— SALES & LETTINGS —

AUCTION GUIDE

£195,000

Severn Meadow

Bewdley, DY12 1AS

PROPERTY SUMMARY

FOR SALE BY CONDITIONAL AUCTION: A two bedroom chalet enjoying a stunning tranquil setting on the banks of the River Severn in Bewdley. Enjoying wonderful views of the river and surrounding countryside and located close to the Severn Valley Railway, the chalet is raised on stilts to prevent the risk of flooding.

The layout includes an open-plan lounge/dining kitchen, two double bedrooms and a well appointed white shower room. The property also includes off-road parking and a beautifully laid out garden, protruding out at the rear, creating a wonderful spot to enjoy the fantastic riverside views. The garden also includes a fishing pontoon.

2



1



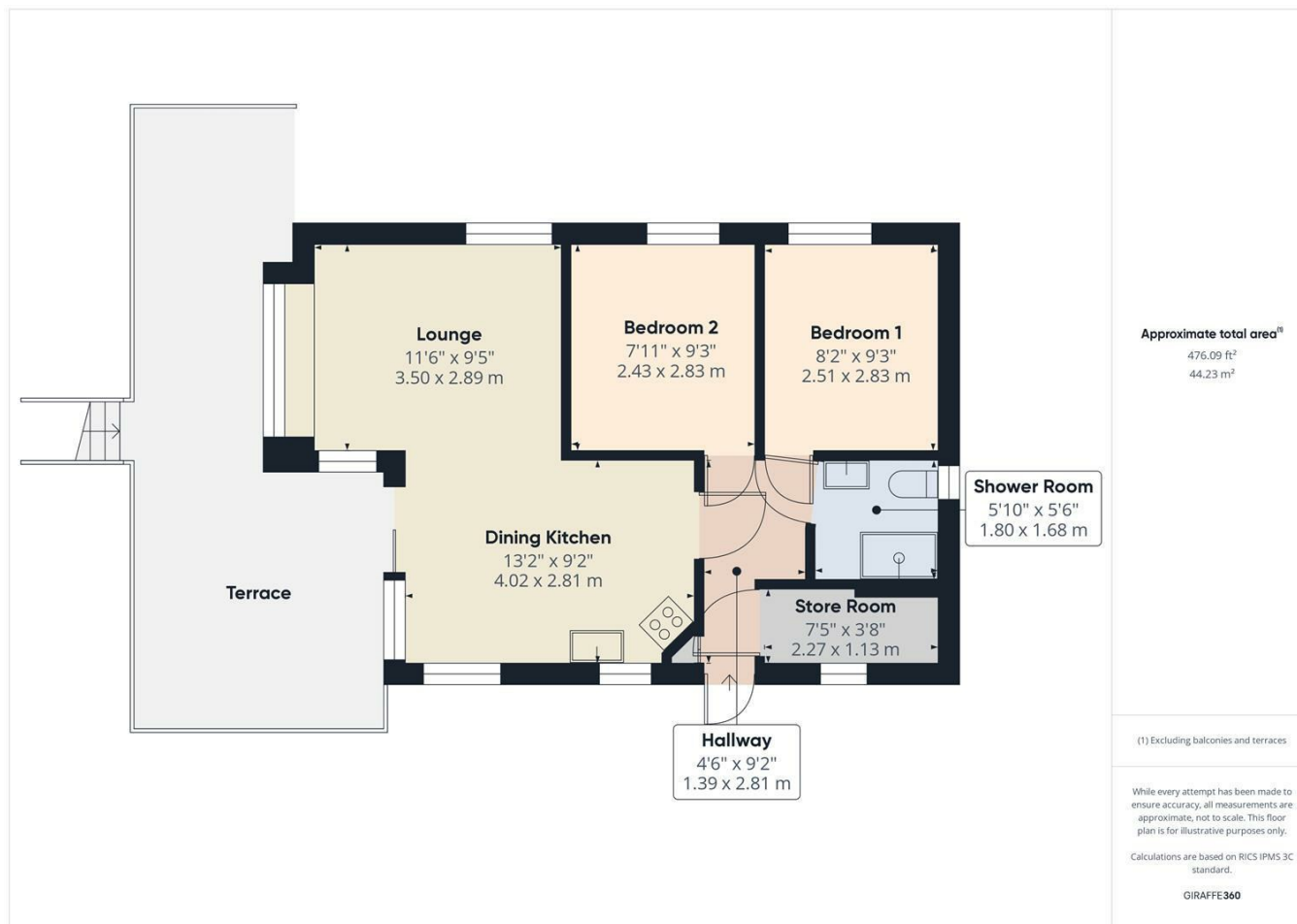
1











LOCAL AUTHORITY
Wyre Forest District Council

TENURE
Leasehold

COUNCIL TAX BAND
A

VIEWINGS
By prior appointment only

Energy Efficiency Rating		
	Current	Potential
Very energy efficient - lower running costs		
(92 plus) A		
(81-91) B		
(69-80) C		
(55-68) D		
(39-54) E		
(21-38) F		
(1-20) G		
Not energy efficient - higher running costs		
England & Wales	EU Directive 2002/91/EC	

Agents Note: Whilst every care has been taken to prepare these particulars, they are for guidance purposes only. All measurements are approximate and are for general guidance purposes only and whilst every care has been taken to ensure their accuracy, they should not be relied upon and potential buyers/tenants are advised to recheck the measurements

EDEN MIDCALF
— SALES & LETTINGS —

5 Load Street
Bewdley
DY12 2AF

01299 402392
wyreforest@edenmidcalf.co.uk
<https://www.edenmidcalf.co.uk/contact-us/>