



EDEN MIDCALF
— SALES & LETTINGS —

£299,950
Severn Side South

Bewdley, DY12 2DX

PROPERTY SUMMARY

A charming Grade II listed three bedroom terraced family house enjoying a wonderful setting overlooking the River Severn in picturesque Bewdley town. Offering a well proportioned layout that retains much of its original character, including exposed timber beams, and benefits from attractive modern appointments. The property enjoys a landscaped low maintenance rear garden and is just a short walk from Bewdley town and its excellent amenities. Available with no upward chain.

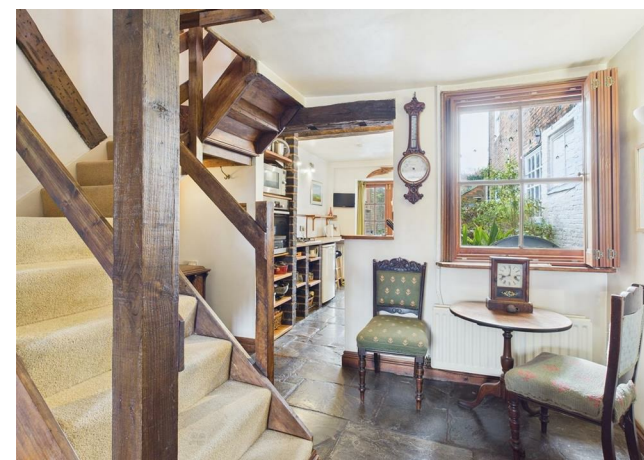
3



2



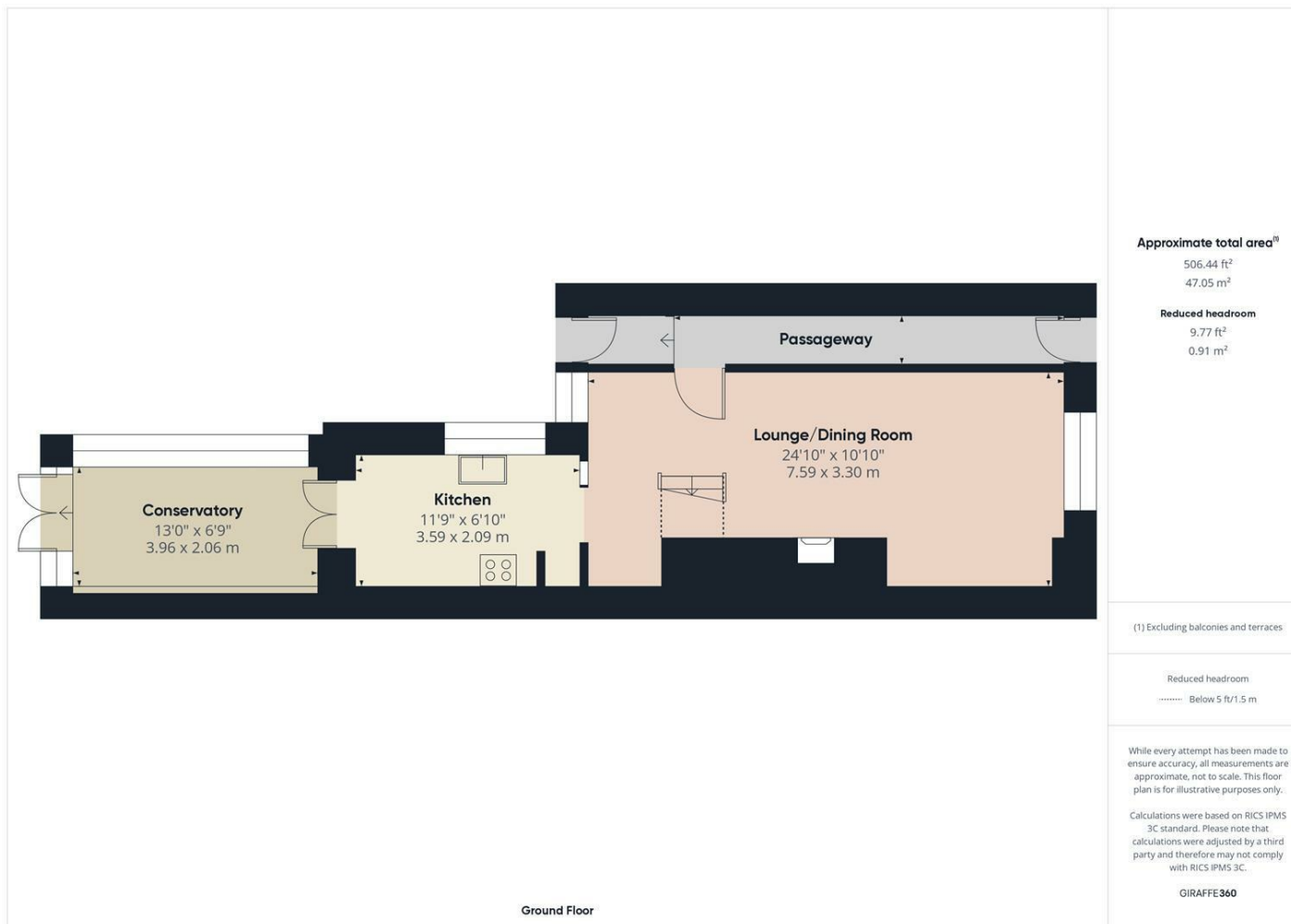
1











LOCAL AUTHORITY
Wyre Forest District Council

TENURE
Freehold

COUNCIL TAX BAND
D

VIEWINGS
By prior appointment only

Energy Efficiency Rating		
	Current	Potential
Very energy efficient - lower running costs		
(92 plus) A		
(81-91) B		
(69-80) C		
(55-68) D		
(39-54) E		
(21-38) F		
(1-20) G		
Not energy efficient - higher running costs		
England & Wales	EU Directive 2002/91/EC	

Agents Note: Whilst every care has been taken to prepare these particulars, they are for guidance purposes only. All measurements are approximate and are for general guidance purposes only and whilst every care has been taken to ensure their accuracy, they should not be relied upon and potential buyers/tenants are advised to recheck the measurements

EDEN MIDCALF
SALES & LETTINGS

5 Load Street
Bewdley
DY12 2AF

01299 402392
wyreforest@edenmidcalf.co.uk
<https://www.edenmidcalf.co.uk/contact-us/>