



EDEN MIDCALF
— SALES & LETTINGS —

AUCTION GUIDE

£220,000

The Green Crumps Brook

Kidderminster, DY14 0HY

PROPERTY SUMMARY

FOR SALE VIA TRADITIONAL AUCTION: A two bedroom semi-detached stone cottage sitting within just over two acres of grounds in the picturesque village of Hopton Wafers, just outside Cleobury Mortimer. The cottage requires updating and provides fantastic potential. The plot also includes a caravan (also requiring improvement), together with an attractive garden, a field, off-road parking and stone shed and metal barn (both in state of disrepair). This is a property with immense potential, which enjoys a wonderful rural setting, with stunning countryside views.

2



1



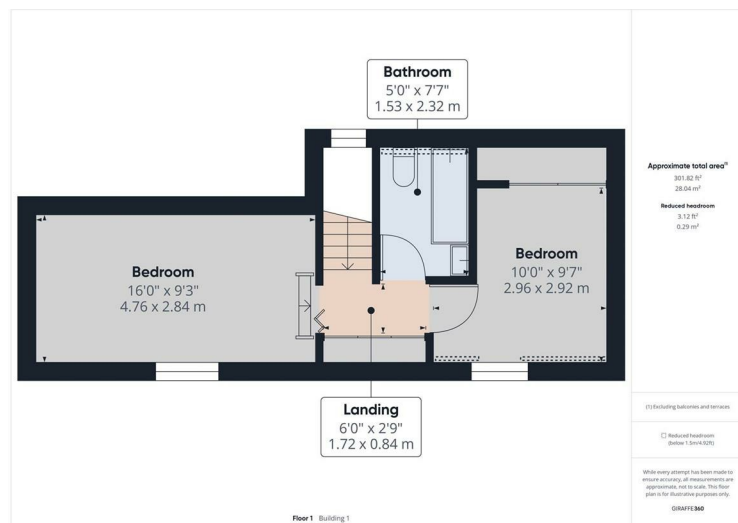
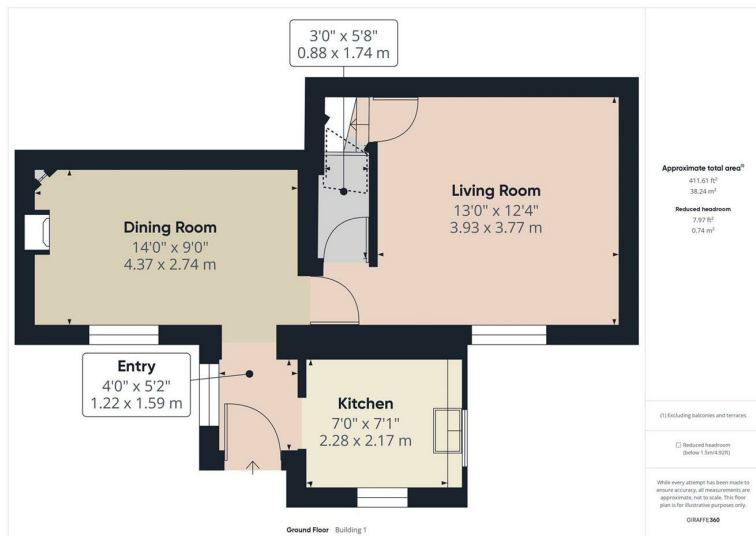
2









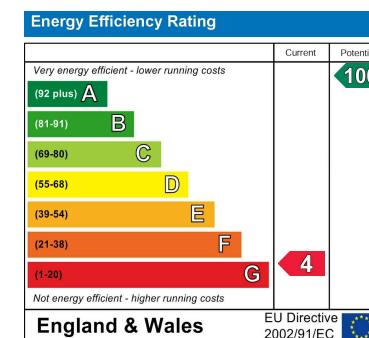


LOCAL AUTHORITY
Wyre Forest District Council

TENURE
Freehold

COUNCIL TAX BAND
C

VIEWINGS
By prior appointment only



Agents Note: Whilst every care has been taken to prepare these particulars, they are for guidance purposes only. All measurements are approximate and are for general guidance purposes only and whilst every care has been taken to ensure their accuracy, they should not be relied upon and potential buyers/tenants are advised to recheck the measurements

EDEN MIDCALF
— SALES & LETTINGS —

5 Load Street
Bewdley
DY12 2AF

01299 402392
wyreforest@edenmidcalf.co.uk
<https://www.edenmidcalf.co.uk/contact-us/>