



EDEN MIDCALF  
— SALES & LETTINGS —

OFFERS IN EXCESS OF

**£150,000**

**Severn Meadow**

Bewdley, DY12 1AR



## PROPERTY SUMMARY

A two bedroom timber chalet enjoying a stunning tranquil setting on the bank of the River Sever in Bewdley. Enjoying wonderful views of the river and surrounding countryside and located close to the Severn Valley Railway, the chalet offers a well proportioned layout with excellent further potential. The property occupies a generous plot with off-road parking and attractive gardens, including a decked terrace overlooking the river and a large shed (roof in need of repair). Available with no upward chain, cash purchase only.

2



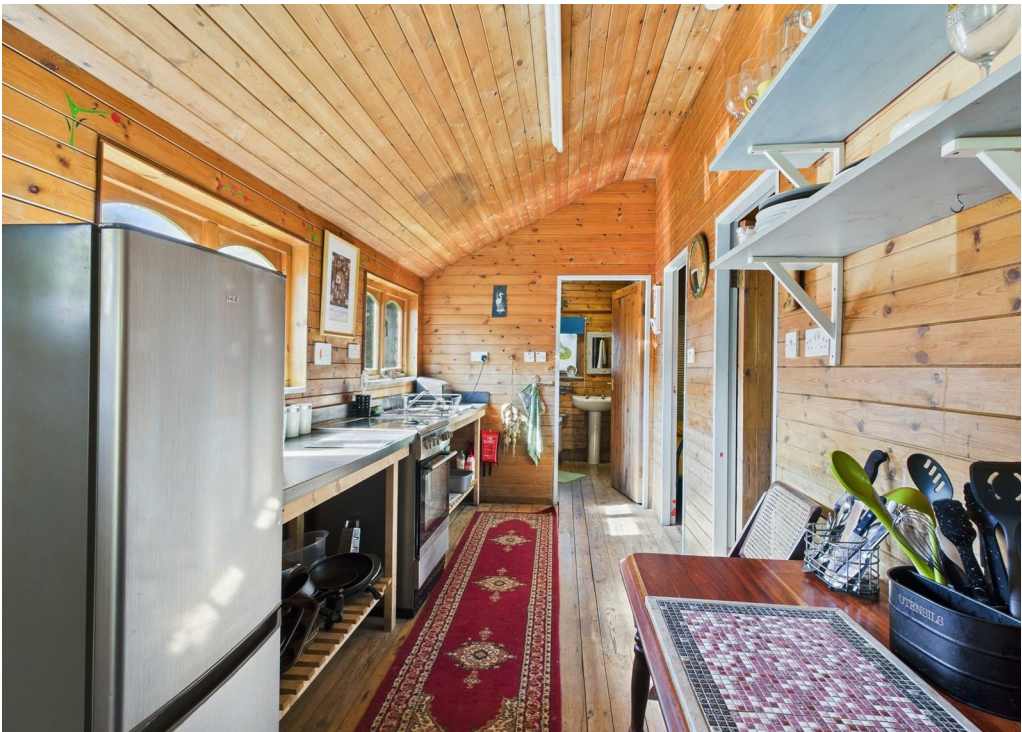
1



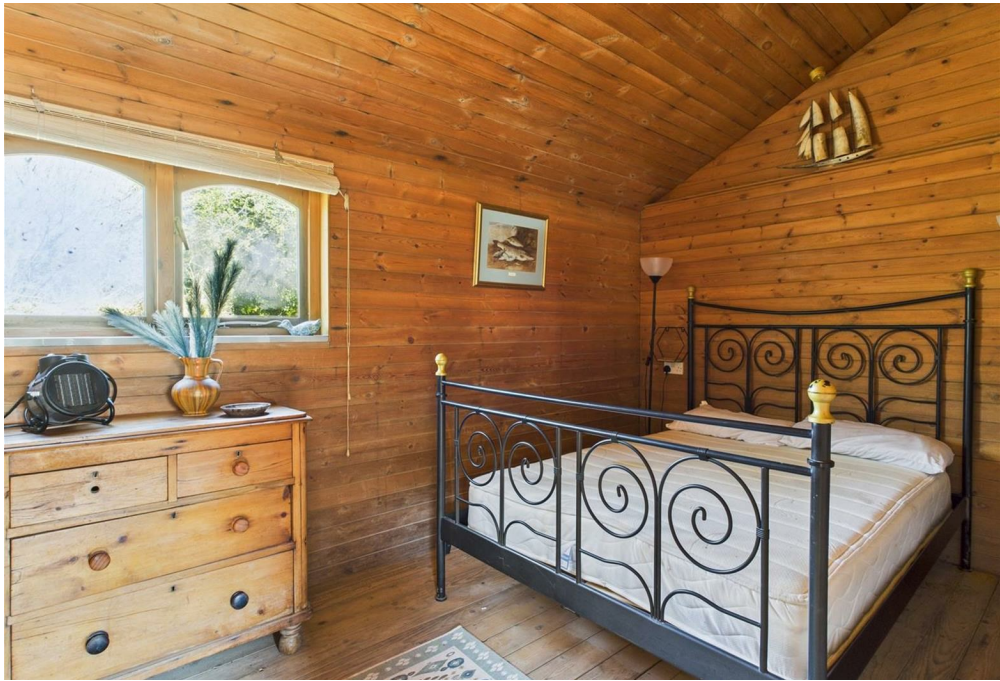
1







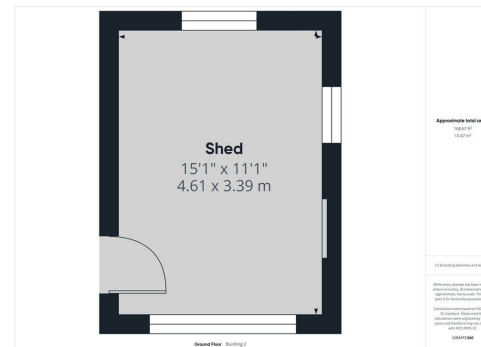










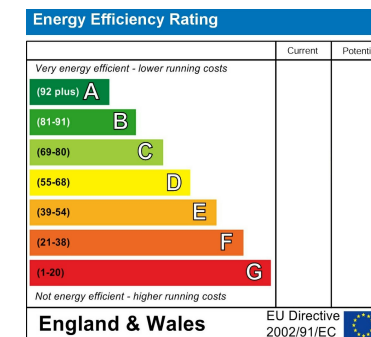


**LOCAL AUTHORITY**  
Wyre Forest District Council

**TENURE**  
Leasehold

**COUNCIL TAX BAND**  
A

**VIEWINGS**  
By prior appointment only



Agents Note: Whilst every care has been taken to prepare these particulars, they are for guidance purposes only. All measurements are approximate and are for general guidance purposes only and whilst every care has been taken to ensure their accuracy, they should not be relied upon and potential buyers/tenants are advised to recheck the measurements

**EDEN MIDCALF**  
— SALES & LETTINGS —

5 Load Street  
Bewdley  
DY12 2AF

01299 402392  
wyreforest@edenmidcalf.co.uk  
<https://www.edenmidcalf.co.uk/contact-us/>