

A photograph of a three-story red brick house with a bay window and a conservatory. The house has a dark grey tiled roof and a small wooden shed in the back garden. A brick wall runs along the left side of the garden. The conservatory is made of dark wood and glass, with a brick base. The garden is paved with red bricks and has a row of rounded bushes. A large willow tree is on the right.

EDEN MIDCALF  
— SALES & LETTINGS —

£420,000  
High Street

Worcestershire, DY12 2DJ



## PROPERTY SUMMARY

Marith House is a wonderful, much improved period semi-detached property enjoying a secluded setting, just off of High Street in the heart of Bewdley town. Retaining much of its original character and charm, the property has been thoughtfully combined with modern appointments and also boasts a beautiful rear garden.

2



1



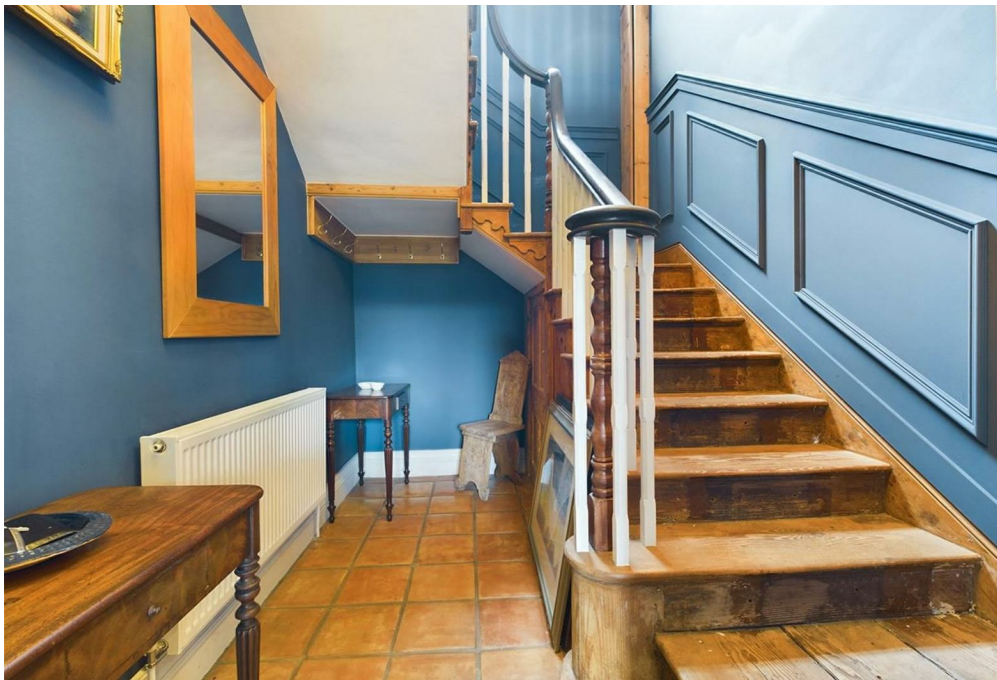
2



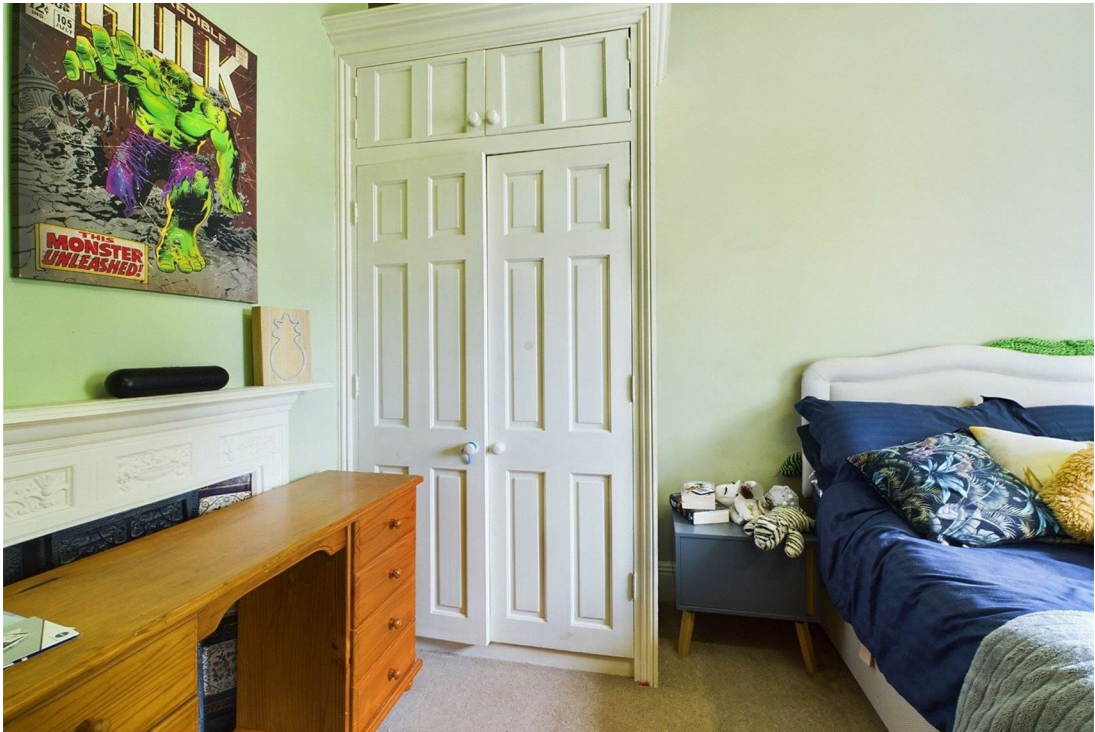












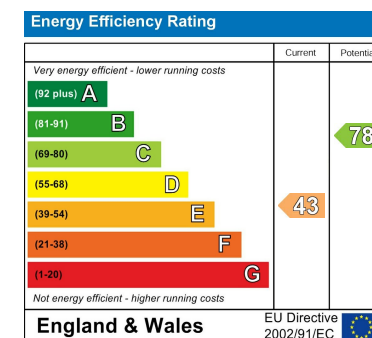


**LOCAL AUTHORITY**  
Wyre Forest District Council

**TENURE**  
Freehold

**COUNCIL TAX BAND**  
F

**VIEWINGS**  
By prior appointment only



Agents Note: Whilst every care has been taken to prepare these particulars, they are for guidance purposes only. All measurements are approximate and are for general guidance purposes only and whilst every care has been taken to ensure their accuracy, they should not be relied upon and potential buyers/tenants are advised to recheck the measurements

**EDEN MIDCALF**  
— SALES & LETTINGS —

5 Load Street  
Bewdley  
DY12 2AF

01299 402392  
wyreforest@edenmidcalf.co.uk  
<https://www.edenmidcalf.co.uk/contact-us/>