



EDEN MIDCALF
— SALES & LETTINGS —

ASKING PRICE

£290,000

Vine Street

Worcestershire, DY10 2TS

PROPERTY SUMMARY

A three bedroom, detached, family house within a popular location in Kidderminster. Offering a generously proportioned layout with excellent further potential, including a spacious full width lounge, a dining kitchen and a huge master bedroom. The property also includes off-road parking for three cars, a garage/store and an excellent sized rear garden.

3



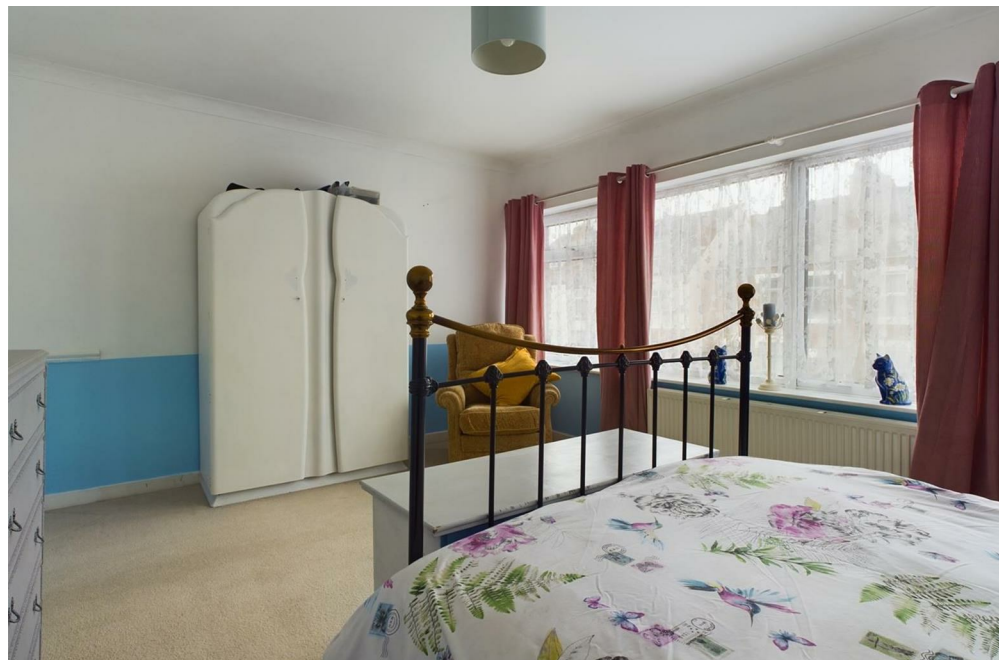
1



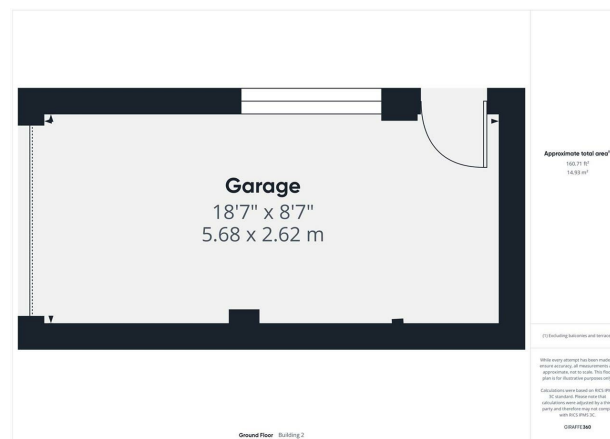
1









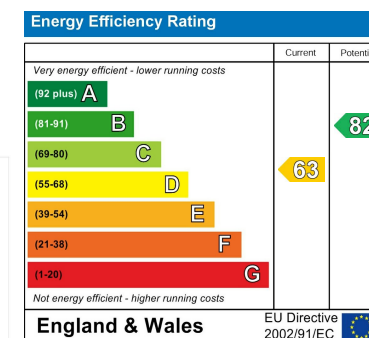


LOCAL AUTHORITY
Wyre Forest County Council

TENURE
Freehold

COUNCIL TAX BAND
D

VIEWINGS
By prior appointment only



Agents Note: Whilst every care has been taken to prepare these particulars, they are for guidance purposes only. All measurements are approximate and are for general guidance purposes only and whilst every care has been taken to ensure their accuracy, they should not be relied upon and potential buyers/tenants are advised to recheck the measurements

EDEN MIDCALF
— SALES & LETTINGS —

5 Load Street
Bewdley
DY12 2AF

01299 402392
wyreforest@edenmidcalf.co.uk
<https://www.edenmidcalf.co.uk/contact-us/>