



EDEN MIDCALF  
— SALES & LETTINGS —

£170,000  
Load Street  
Bewdley, DY12 2AP



## PROPERTY SUMMARY

Unexpectedly back on the market, this charming Grade II listed apartment is arranged over two floors and situated in the heart of Bewdley town centre. The versatile and beautifully improved accommodation retains much of its original character whilst complemented by attractive modern appointments. The apartment enjoys the benefit of a shared resident's parking area which is accessed via Dog Lane and from where wrought iron gates open to a pathway which leads to a communal front entrance.

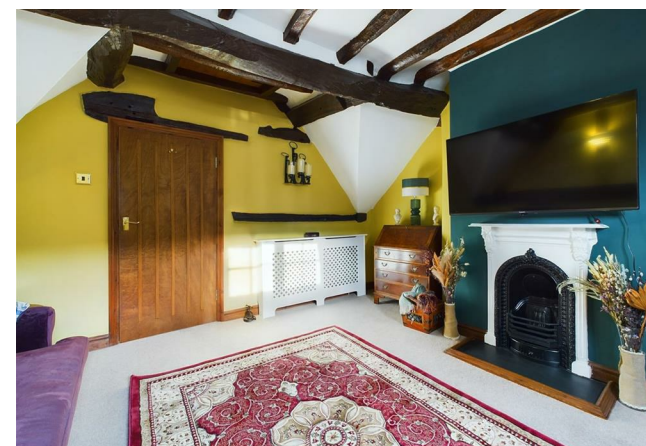
2



1



1



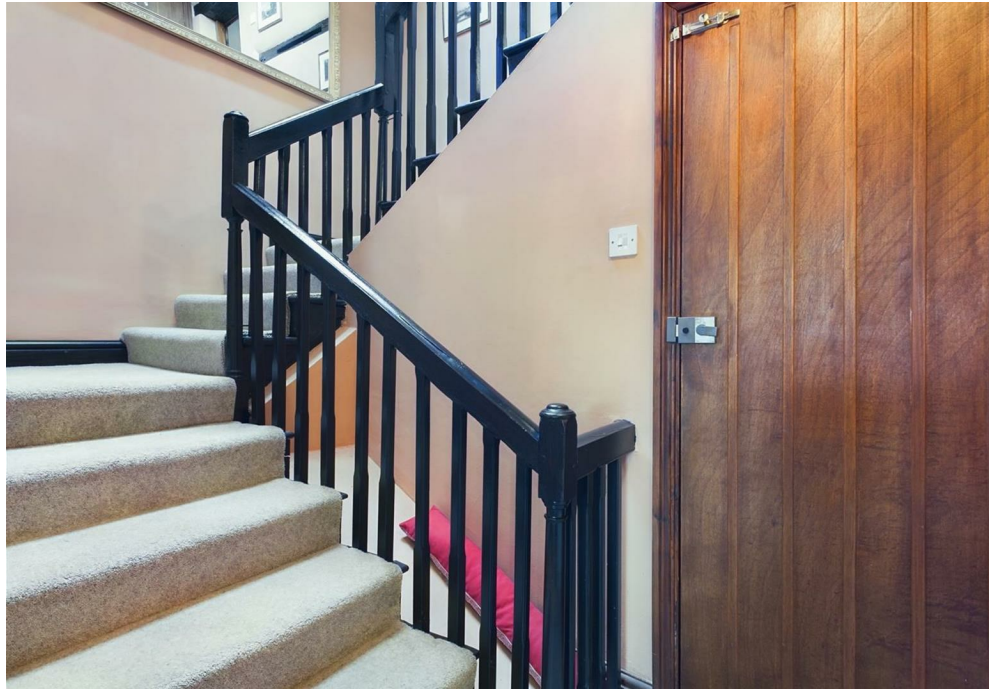




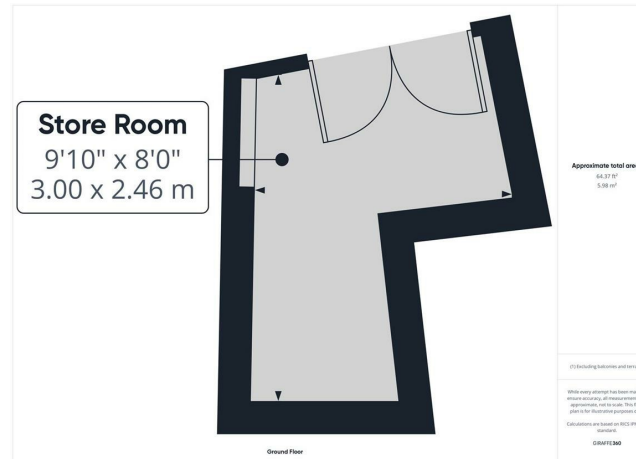
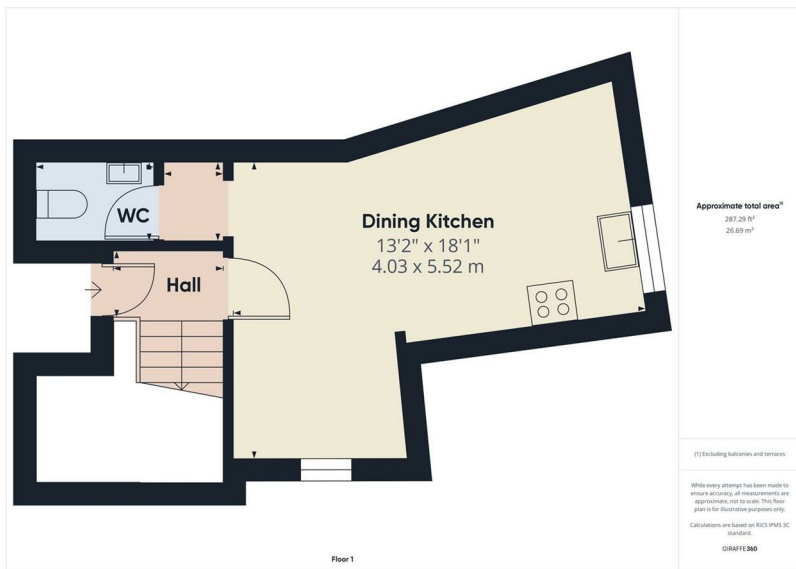










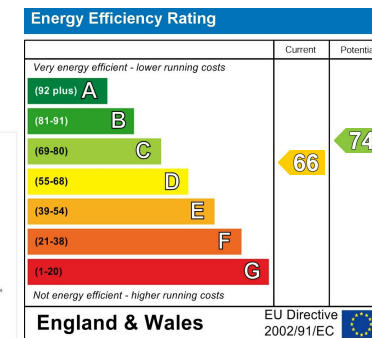


**LOCAL AUTHORITY**  
Wyre Forest District Council

**TENURE**  
Leasehold

**COUNCIL TAX BAND**  
A

**VIEWINGS**  
By prior appointment only



Agents Note: Whilst every care has been taken to prepare these particulars, they are for guidance purposes only. All measurements are approximate and are for general guidance purposes only and whilst every care has been taken to ensure their accuracy, they should not be relied upon and potential buyers/tenants are advised to recheck the measurements

**EDEN MIDCALF**  
— SALES & LETTINGS —

5 Load Street  
Bewdley  
DY12 2AF

01299 402392  
wyreforest@edenmidcalf.co.uk  
<https://www.edenmidcalf.co.uk/contact-us/>