

EDEN MIDCALF
— SALES & LETTINGS —

£62,500
St. Cecilia Close
Kidderminster, DY10 1LN



PROPERTY SUMMARY

A spacious two bedroom ground floor flat within a convenient location in Kidderminster. Well placed for local shops/amenities and offering generously proportioned and well presented layout, including a good sized lounge, a kitchen with integrated appliances and two double bedrooms. The flat also includes allocated off-road parking for one car, which is situated directly to the front.

2



1



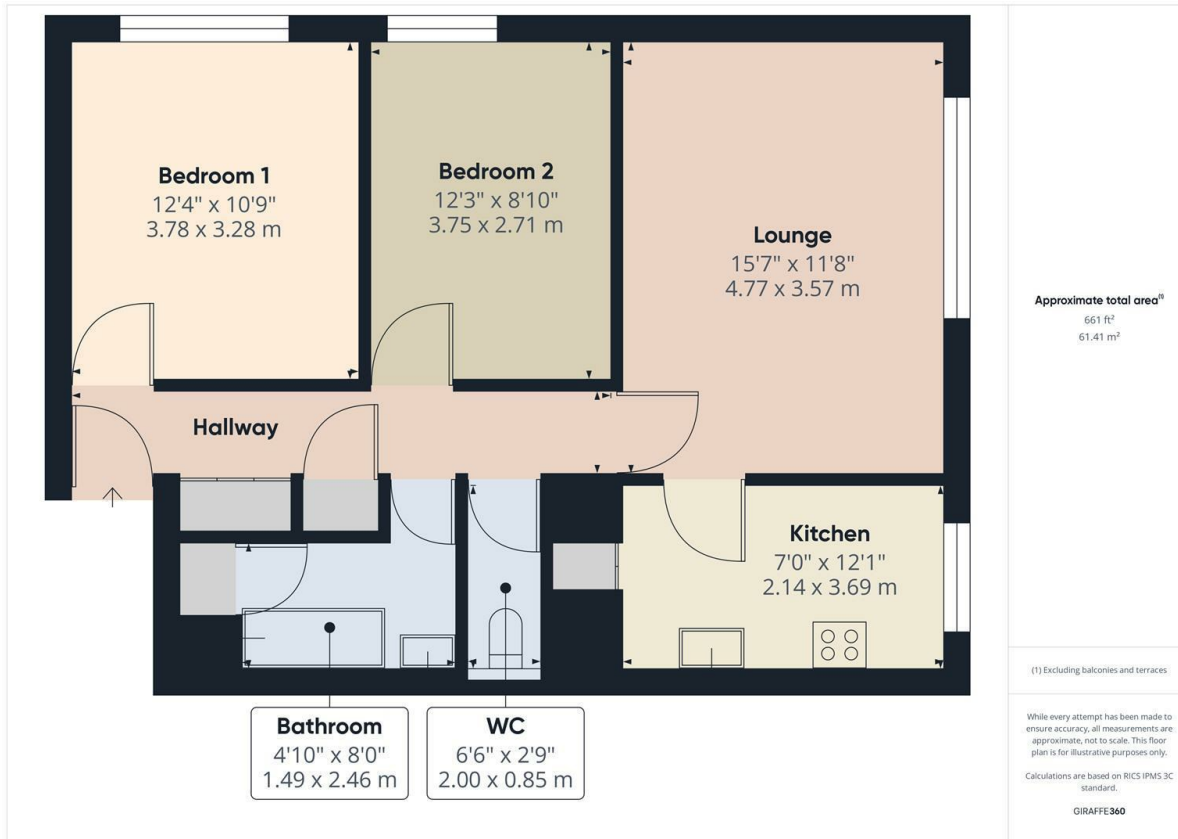
1









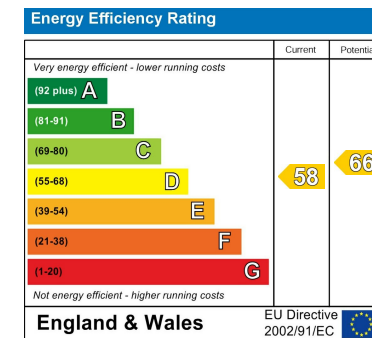


LOCAL AUTHORITY
Wyre Forest District Council

TENURE
Leasehold

COUNCIL TAX BAND
A

VIEWINGS
By prior appointment only



Agents Note: Whilst every care has been taken to prepare these particulars, they are for guidance purposes only. All measurements are approximate and are for general guidance purposes only and whilst every care has been taken to ensure their accuracy, they should not be relied upon and potential buyers/tenants are advised to recheck the measurements

EDEN MIDCALF
SALES & LETTINGS

5 Load Street
Bewdley
DY12 2AF

01299 402392
wyreforest@edenmidcalf.co.uk
<https://www.edenmidcalf.co.uk/contact-us/>