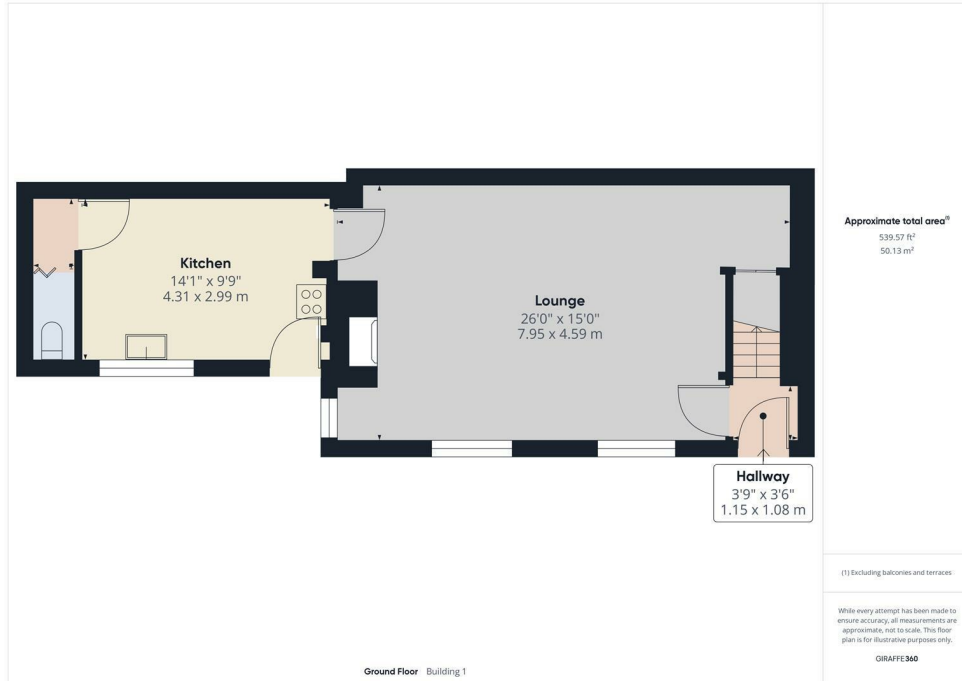


EDEN MIDCALF  
— SALES & LETTINGS —

AUCTION GUIDE

£275,000  
Wolverley

Worcestershire, DY11 5TH



| Energy Efficiency Rating                    |  | Current                 | Potential |
|---|--|-------------------------|-----------|
| Very energy efficient - lower running costs |  |                         |           |
| (92 plus) A                                 |  |                         |           |
| (81-91) B                                   |  |                         |           |
| (69-80) C                                   |  |                         |           |
| (55-68) D                                   |  |                         |           |
| (39-54) E                                   |  |                         |           |
| (21-38) F                                   |  |                         |           |
| (1-20) G                                    |  | 1                       |           |
| Not energy efficient - higher running costs |  |                         |           |
| England & Wales                             |  | EU Directive 2002/91/EC |           |

Agents Note: Whilst every care has been taken to prepare these particulars, they are for guidance purposes only. All measurements are approximate and are for general guidance purposes only and whilst every care has been taken to ensure their accuracy, they should not be relied upon and potential buyers/tenants are advised to recheck

**EDEN MIDCALF**  
SALES & LETTINGS

5 Load Street  
Bewdley  
DY12 2AF

01299 402392  
wyreforest@edenmidcalf.co.uk  
<https://www.edenmidcalf.co.uk/>  
us/