



EDEN MIDCALF
— SALES & LETTINGS —

AUCTION GUIDE

£110,000

Westbourne Street

Bewdley, DY12 1BS

PROPERTY SUMMARY

FOR SALE BY TRADITIONAL AUCTION: A charming Grade II listed cottage delightfully situated neighbouring, and with access onto, the attractive grounds of Lychgate Gardens in Bewdley and with planning permission to convert garden outbuilding.

1

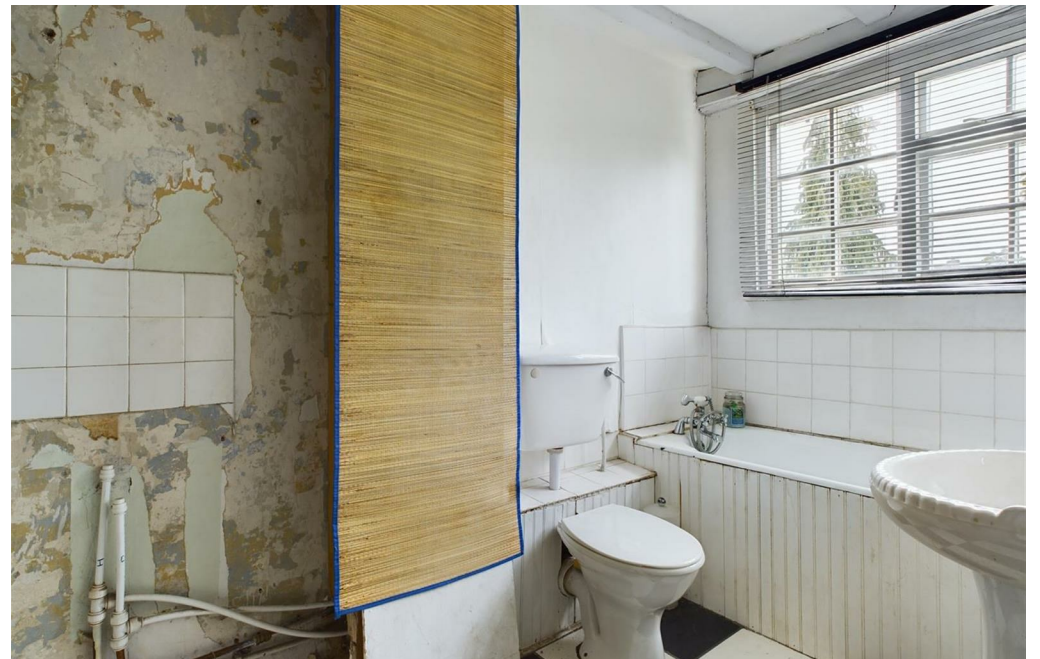


1



1











Approximate total area⁽¹⁾
614.51 ft²
57.09 m²

Reduced headroom
90.96 ft²
8.45 m²

(1) Excluding balconies and terraces

Reduced headroom
..... Below 5 ft/1.5 m

While every attempt has been made to ensure accuracy, all measurements are approximate, not to scale. This floor plan is for illustrative purposes only.

Calculations are based on RICS IPMS 3C standard.

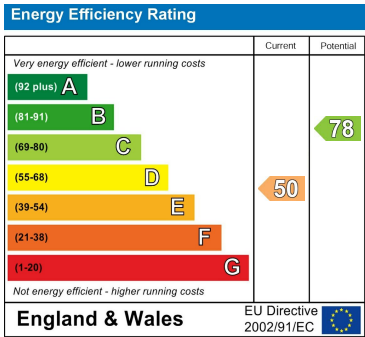
GIRAFFE360

LOCAL AUTHORITY
Wyre forest District Council

TENURE
Freehold

COUNCIL TAX BAND
B

VIEWINGS
By prior appointment only



Agents Note: Whilst every care has been taken to prepare these particulars, they are for guidance purposes only. All measurements are approximate and are for general guidance purposes only and whilst every care has been taken to ensure their accuracy, they should not be relied upon and potential buyers/tenants are advised to recheck the measurements

EDEN MIDCALF
SALES & LETTINGS

5 Load Street
Bewdley
DY12 2AF

01299 402392
wyreforest@edenmidcalf.co.uk
<https://www.edenmidcalf.co.uk/contact-us/>