



EDEN MIDCALF  
— SALES & LETTINGS —

AUCTION GUIDE

£185,000

Holmwood Avenue

Kidderminster, DY11 6DA

## PROPERTY SUMMARY

FOR SALE BY THE TRADITIONAL METHOD OF AUCTION: Requiring some remedial work, this well presented three bedroom semi-detached house benefits from off road parking and a generous garden at this popular Kidderminster address.

3



1



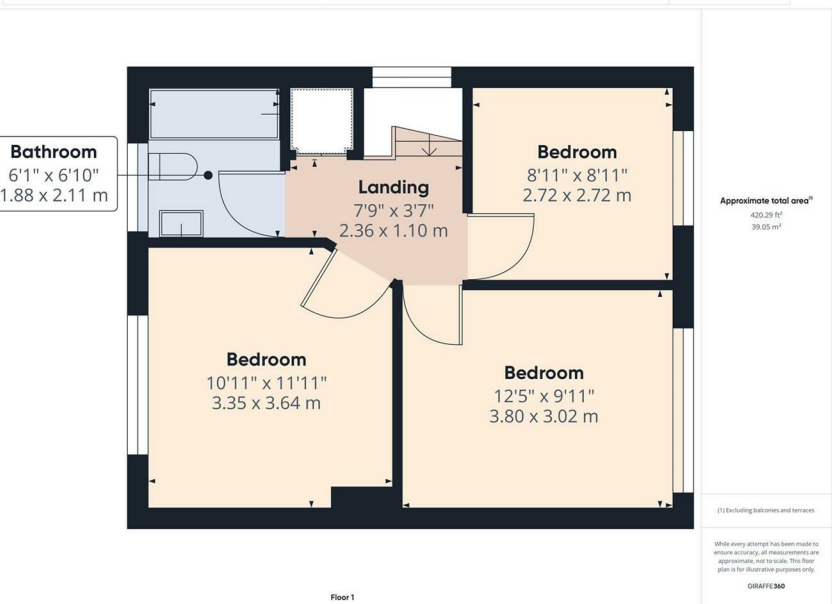
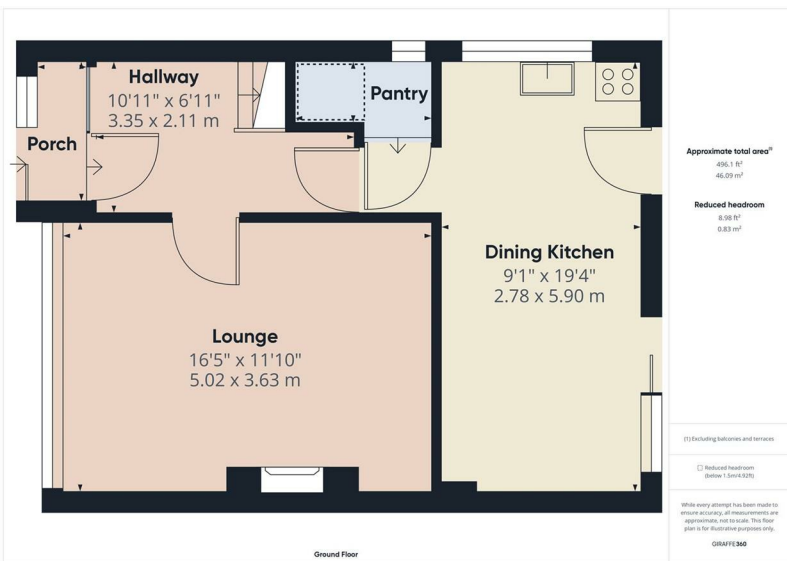
1









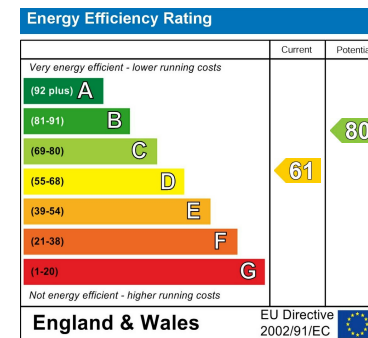


**LOCAL AUTHORITY**  
Wyre Forest District Council

**TENURE**  
Freehold

**COUNCIL TAX BAND**  
B

**VIEWINGS**  
By prior appointment only



Agents Note: Whilst every care has been taken to prepare these particulars, they are for guidance purposes only. All measurements are approximate and are for general guidance purposes only and whilst every care has been taken to ensure their accuracy, they should not be relied upon and potential buyers/tenants are advised to recheck the measurements

**EDEN MIDCALF**  
SALES & LETTINGS

5 Load Street  
Bewdley  
DY12 2AF

01299 402392  
wyreforest@edenmidcalf.co.uk  
<https://www.edenmidcalf.co.uk/contact-us/>