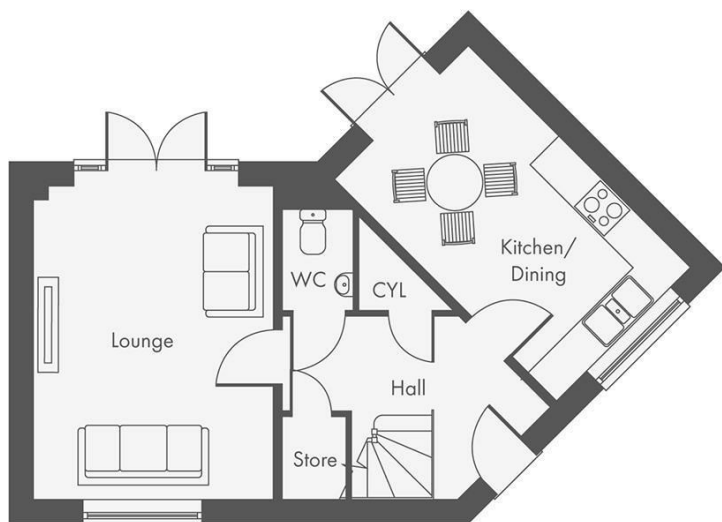


EDEN MIDCALF
— SALES & LETTINGS —

£340,000
Mortimer Manor
Bewdley, DY12 1JQ





**SAVE THOUSANDS
ON ESTATE
AGENTS FEES WITH
OUR ASSISTED
MOVE SCHEME**

**UP TO 100%
PART EXCHANGE
AVAILABLE ON
THIS HOME**

Energy Efficiency Rating		Current	Potential
Very energy efficient - lower running costs			
(92 plus) A			
(81-91) B			
(69-80) C			
(55-68) D			
(39-54) E			
(21-38) F			
(1-20) G			
Not energy efficient - higher running costs			
England & Wales		EU Directive 2002/91/EC	

Agents Note: Whilst every care has been taken to prepare these particulars, they are for guidance purposes only. All measurements are approximate and are for general guidance purposes only and whilst every care has been taken to ensure their accuracy, they should not be relied upon and potential buyers/tenants are advised to recheck

EDEN MIDCALF
SALES & LETTINGS

5 Load Street
Bewdley
DY12 2AF

01299 402392
wyreforest@edenmidcalf.co.uk
<https://www.edenmidcalf.co.uk/>
us/