



EDEN MIDCALF
— SALES & LETTINGS —

OFFERS IN THE REGION OF

£300,000

Axminster Drive

Stourport-on-Severn, DY13 9FS

PROPERTY SUMMARY

A deceptively spacious three bedroom home situated just outside the town centre on the new Folliot's Manor development by Barratt Homes.

3



2



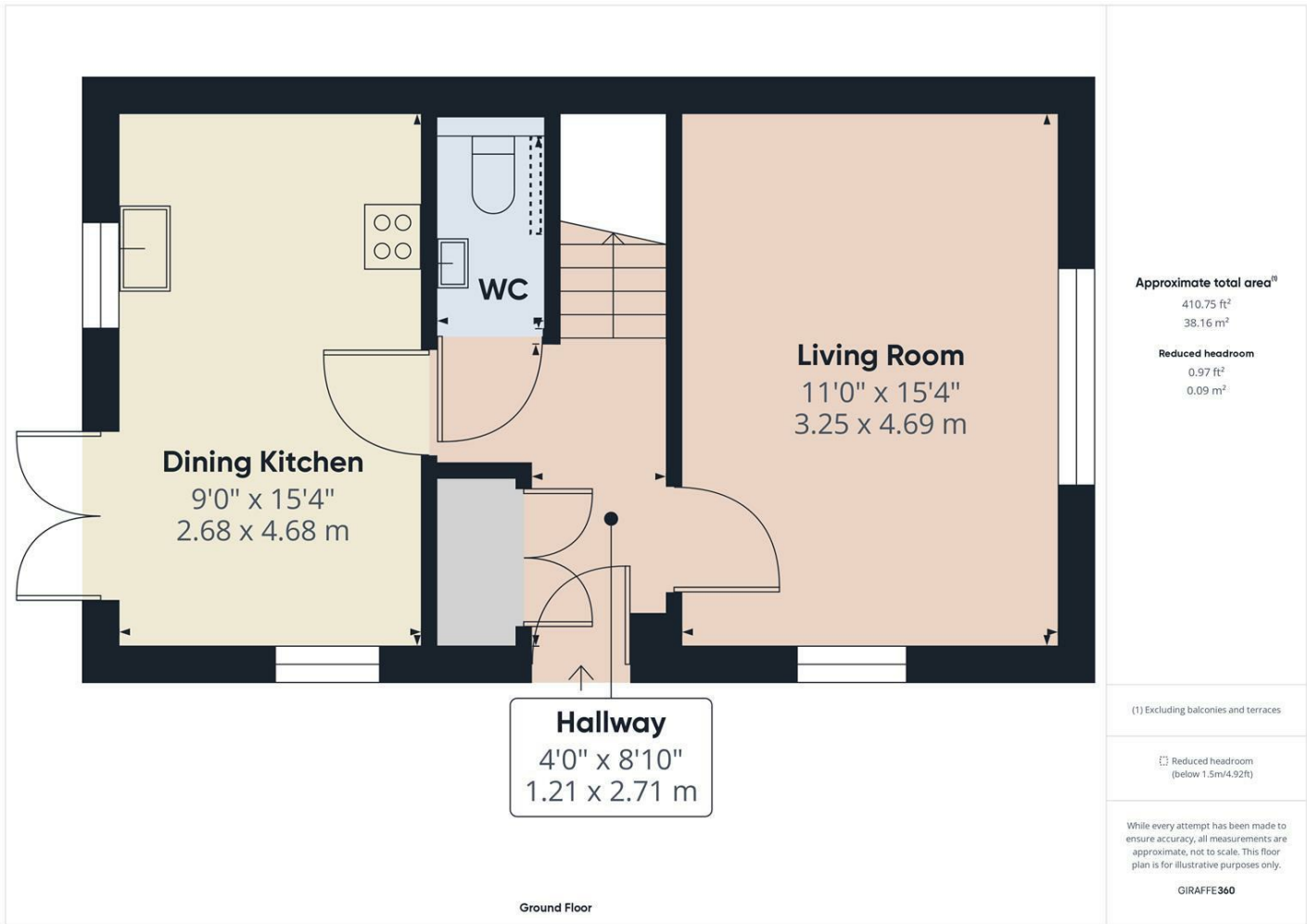
1









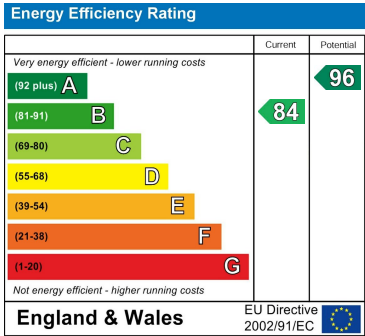


LOCAL AUTHORITY

TENURE
Freehold

COUNCIL TAX BAND
C

VIEWINGS
By prior appointment only



Agents Note: Whilst every care has been taken to prepare these particulars, they are for guidance purposes only. All measurements are approximate and are for general guidance purposes only and whilst every care has been taken to ensure their accuracy, they should not be relied upon and potential buyers/tenants are advised to recheck the measurements

EDEN MIDCALF
SALES & LETTINGS

5 Load Street
Bewdley
DY12 2AF

01299 402392
wyreforest@edenmidcalf.co.uk
<https://www.edenmidcalf.co.uk/contact-us/>