

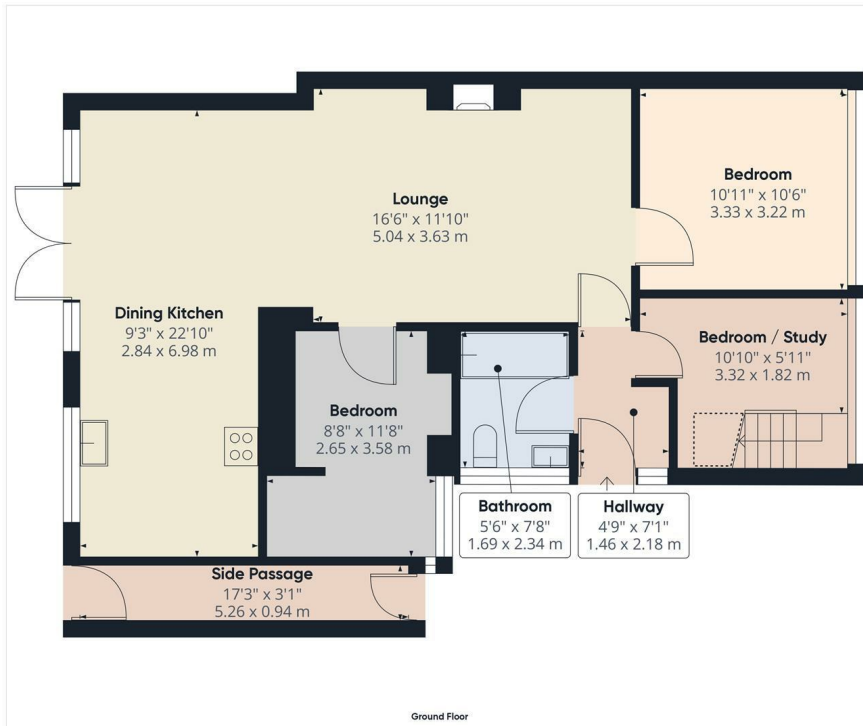
EDEN MIDCALF  
— SALES & LETTINGS —

OFFERS OVER

£250,000

Grosvenor Wood

Bewdley, DY12 2HY



Approximate total area<sup>†</sup>  
872.43 ft<sup>2</sup>  
81.05 m<sup>2</sup>

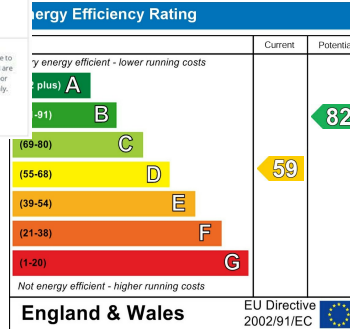
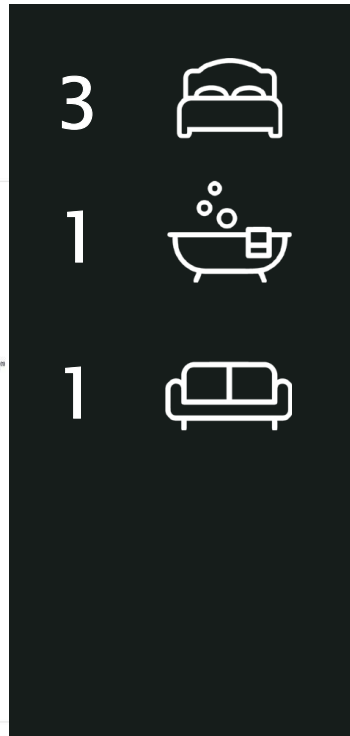
Reduced headroom  
10.93 ft<sup>2</sup>  
1.02 m<sup>2</sup>

(†) Excluding balconies and terraces

□ Reduced headroom (below 1.5m/4.92ft)

While every attempt has been made to ensure accuracy, all measurements are approximate, not to scale. This floor plan is for illustrative purposes only.

GIRAFFE 340



Agents Note: Whilst every care has been taken to prepare these particulars, they are for guidance purposes only. All measurements are approximate and are for general guidance purposes only and whilst every care has been taken to ensure their accuracy, they should not be relied upon and potential buyers/tenants are advised to recheck

**EDEN MIDCALF**  
SALES & LETTINGS

5 Load Street  
Bewdley  
DY12 2AF

01299 402392  
wyreforest@edenmidcalf.co.uk  
<https://www.edenmidcalf.co.uk/>  
us/