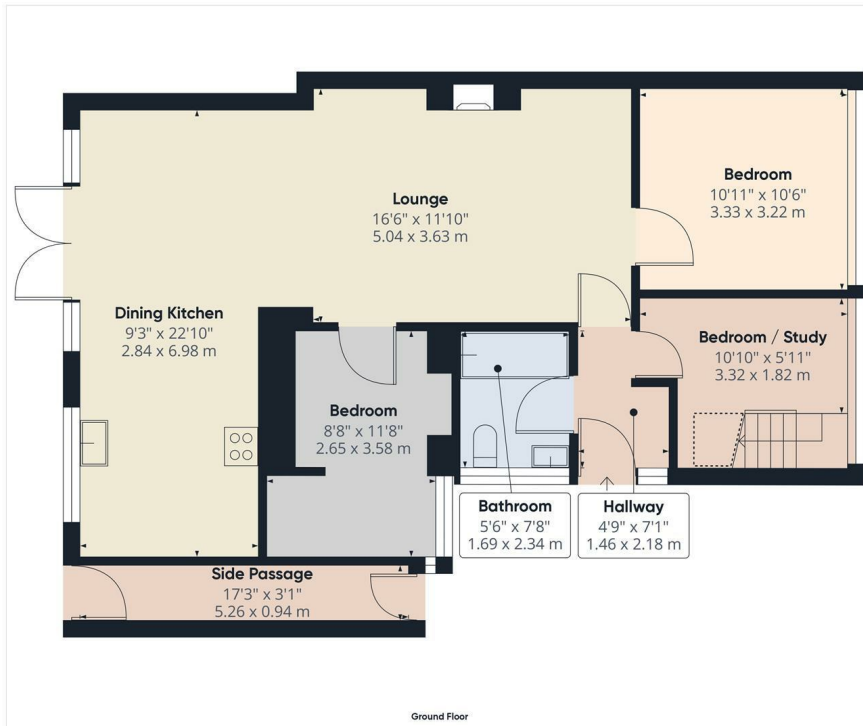


EDEN MIDCALF
— SALES & LETTINGS —

£279,950
Grosvenor Wood
Bewdley, DY12 2HY



Approximate total area¹
872.43 ft²
81.05 m²

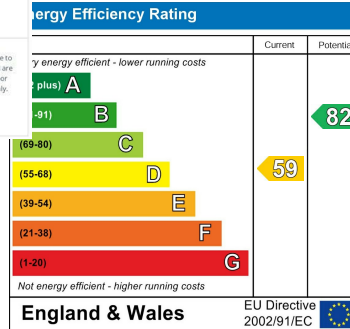
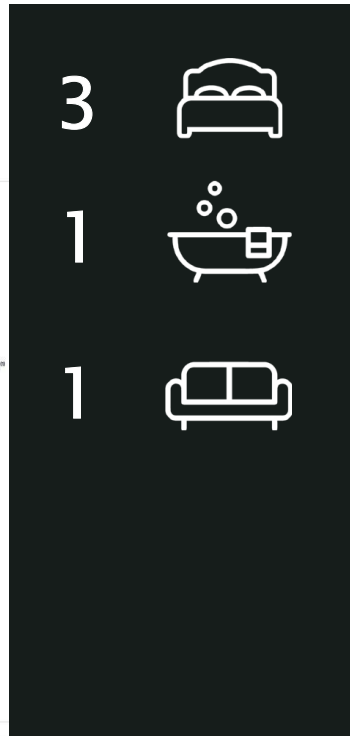
Reduced headroom
10.93 ft²
1.02 m²

(1) Excluding balconies and terraces

☐ Reduced headroom (below 1.5m/4.92ft)

While every attempt has been made to ensure accuracy, all measurements are approximate, not to scale. This floor plan is for illustrative purposes only.

GIRAFFE 340



Agents Note: Whilst every care has been taken to prepare these particulars, they are for guidance purposes only. All measurements are approximate and are for general guidance purposes only and whilst every care has been taken to ensure their accuracy, they should not be relied upon and potential buyers/tenants are advised to recheck

EDEN MIDCALF
SALES & LETTINGS

5 Load Street
Bewdley
DY12 2AF

01299 402392
wyreforest@edenmidcalf.co.uk
<https://www.edenmidcalf.co.uk/>
us/