



EDEN MIDCALF  
— SALES & LETTINGS —

OFFERS IN EXCESS OF

**£400,000**

**Gardners Meadow**

Worcestershire, DY12 2DG

## PROPERTY SUMMARY

A wonderfully unique terraced property within a highly sought after development in Bewdley. Originally built as two (two bed roomed) houses and thoughtfully combined into one to create an impressively spacious layout, including a large dining kitchen with integrated appliances and a rear conservatory extension. Including off-road parking and an attractive low maintenance rear garden.

2



1



1







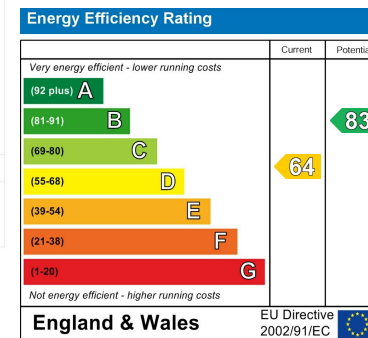
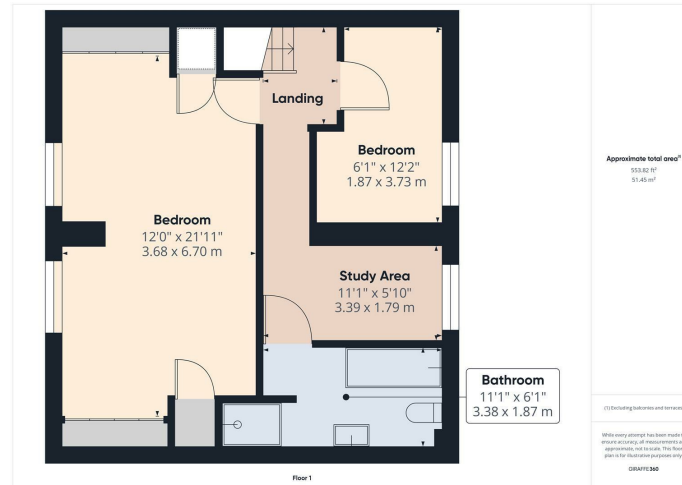


**LOCAL AUTHORITY**  
Wyre Forest District Council

**TENURE**  
Freehold

**COUNCIL TAX BAND**  
D

**VIEWINGS**  
By prior appointment only



Agents Note: Whilst every care has been taken to prepare these particulars, they are for guidance purposes only. All measurements are approximate and are for general guidance purposes only and whilst every care has been taken to ensure their accuracy, they should not be relied upon and potential buyers/tenants are advised to recheck the measurements

**EDEN MIDCALF**  
SALES & LETTINGS

5 Load Street  
Bewdley  
DY12 2AF

01299 402392  
wyreforest@edenmidcalf.co.uk  
<https://www.edenmidcalf.co.uk/contact-us/>