

EDEN MIDCALF
— SALES & LETTINGS —

£475,000
Gardners Meadow
Worcestershire, DY12 2DG



PROPERTY SUMMARY

A wonderfully unique modern terraced property within a highly sought after development in Bewdley. Originally built as two houses and thoughtfully combined into one to create an impressively spacious layout, including a large dining kitchen with integrated appliances and a rear conservatory extension. Including off-road parking and an attractive low maintenance rear garden.

2



1



1







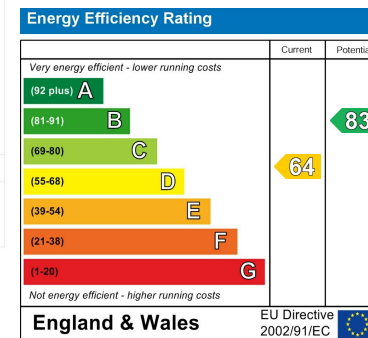
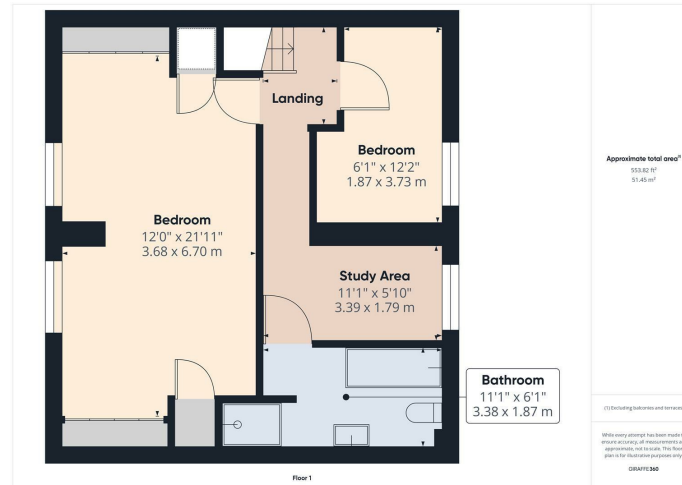


LOCAL AUTHORITY
Wyre Forest District Council

TENURE
Freehold

COUNCIL TAX BAND
D

VIEWINGS
By prior appointment only



Agents Note: Whilst every care has been taken to prepare these particulars, they are for guidance purposes only. All measurements are approximate and are for general guidance purposes only and whilst every care has been taken to ensure their accuracy, they should not be relied upon and potential buyers/tenants are advised to recheck the measurements

EDEN MIDCALF
SALES & LETTINGS

5 Load Street
Bewdley
DY12 2AF

01299 402392
wyreforest@edenmidcalf.co.uk
<https://www.edenmidcalf.co.uk/contact-us/>