

EDEN MIDCALF
— SALES & LETTINGS —

£260,000
Sandy Bank
Bewdley, DY12 2AY



PROPERTY SUMMARY

A delightfully quirky two bedroom cottage located in the heart of Bewdley and enjoying views over the town and St Anne's Church. Within walking distance of Bewdley's excellent selection of amenities and offering a charming, split-level layout, which retains much of its original character, including exposed timber beams throughout. The accommodation includes two excellent double bedrooms and an attractive courtyard rear garden, which enjoys an open rear aspect. Available with No Upward Chain.

2



1



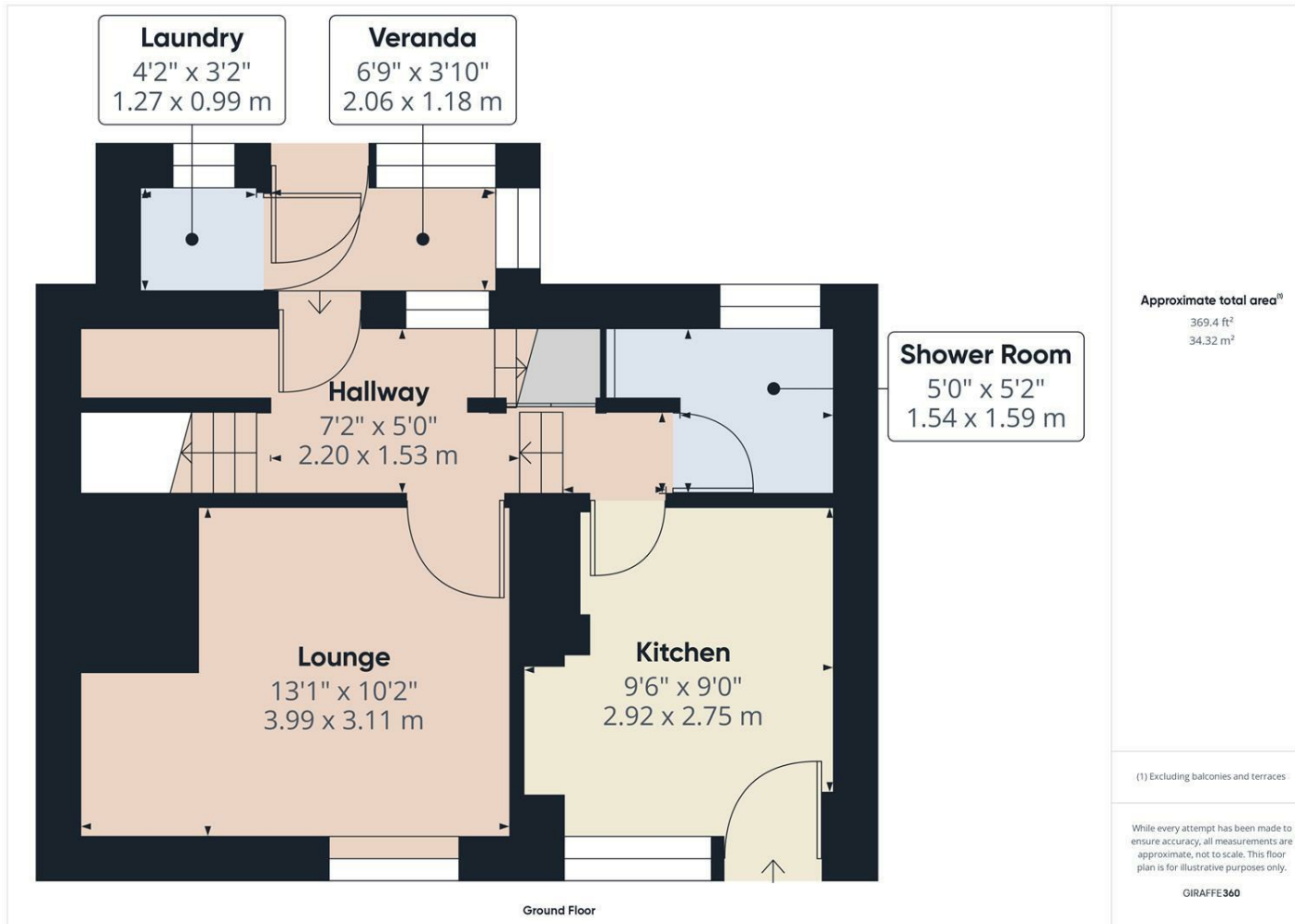
1











LOCAL AUTHORITY
Wyre Forest District Council

TENURE
Freehold

COUNCIL TAX BAND
C

VIEWINGS
By prior appointment only

Energy Efficiency Rating		
	Current	Potential
<i>Very energy efficient - lower running costs</i>		
(92 plus) A		
(81-91) B		
(69-80) C		
(55-68) D		
(39-54) E		
(21-38) F		
(1-20) G		
<i>Not energy efficient - higher running costs</i>		
England & Wales	EU Directive 2002/91/EC	

Agents Note: Whilst every care has been taken to prepare these particulars, they are for guidance purposes only. All measurements are approximate and are for general guidance purposes only and whilst every care has been taken to ensure their accuracy, they should not be relied upon and potential buyers/tenants are advised to recheck the measurements

EDEN MIDCALF
SALES & LETTINGS

5 Load Street
Bewdley
DY12 2AF

01299 402392
wyreforest@edenmidcalf.co.uk
<https://www.edenmidcalf.co.uk/contact-us/>