

EDEN MIDCALF
— SALES & LETTINGS —

6

ASKING PRICE

£169,950

Dowles Road

Bewdley, DY12 3AE

PROPERTY SUMMARY

A spacious two bedroom chalet bungalow located within a sought after development in Bewdley. Enjoying attractive view towards the Wyre Forest and offering a well proportioned layout including a master bedroom with an en-suite, off-road parking and beautifully landscaped low maintenance gardens.

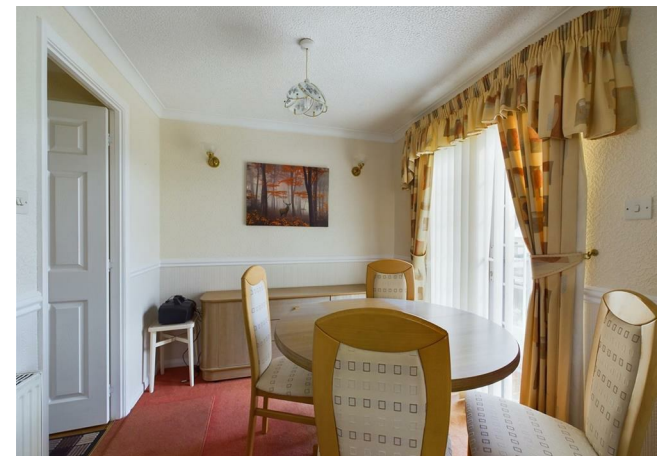
2



2



1







LOCAL AUTHORITY

TENURE

COUNCIL TAX BAND

A

VIEWINGS

By prior appointment only

Energy Efficiency Rating		
	Current	Potential
Very energy efficient - lower running costs		
(92 plus) A		
(81-91) B		
(69-80) C		
(55-68) D		
(39-54) E		
(21-38) F		
(1-20) G		
Not energy efficient - higher running costs		
England & Wales	EU Directive 2002/91/EC	

Agents Note: Whilst every care has been taken to prepare these particulars, they are for guidance purposes only. All measurements are approximate and are for general guidance purposes only and whilst every care has been taken to ensure their accuracy, they should not be relied upon and potential buyers/tenants are advised to recheck the measurements.

EDEN MIDCALF
SALES & LETTINGS

5 Load Street
Bewdley
DY12 2AF

01299 402392
wyreforest@edenmidcalf.co.uk
<https://www.edenmidcalf.co.uk/>
us/