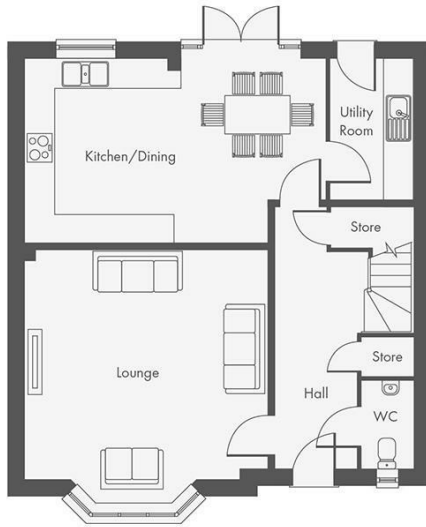


EDEN MIDCALF  
— SALES & LETTINGS —


£500,000  
Mortimer Manor  
Bewdley, DY12 1JQ





**SAVE THOUSANDS  
ON ESTATE  
AGENTS FEES WITH  
OUR ASSISTED  
MOVE SCHEME**

**UP TO 100%  
PART EXCHANGE  
AVAILABLE ON  
THIS HOME**

Energy Efficiency Rating		Current	Potential
<i>Very energy efficient - lower running costs</i>			
(92 plus) <b>A</b>			
(81-91) <b>B</b>			
(69-80) <b>C</b>			
(55-68) <b>D</b>			
(39-54) <b>E</b>			
(21-38) <b>F</b>			
(1-20) <b>G</b>			
<i>Not energy efficient - higher running costs</i>			
<b>England &amp; Wales</b>		EU Directive 2002/91/EC 	

Agents Note: Whilst every care has been taken to prepare these particulars, they are for guidance purposes only. All measurements are approximate and are for general guidance purposes only and whilst every care has been taken to ensure their accuracy, they should not be relied upon and potential buyers/tenants are advised to recheck

**EDEN MIDCALF**  
SALES & LETTINGS

5 Load Street  
Bewdley  
DY12 2AF

01299 402392  
wyreforest@edenmidcalf.co.uk  
<https://www.edenmidcalf.co.uk/>  
us/