

EDEN MIDCALF
— SALES & LETTINGS —

£367,500
Branches Close

Worcestershire, DY12 2HD

PROPERTY SUMMARY

A beautifully improved and extended three bedroom semi-detached family house enjoying a delightful cul-de-sac setting in Bewdley. Offering a generous, attractively presented layout with three reception rooms, plus off-road parking for at least two cars and a landscaped southerly facing garden.

3



1



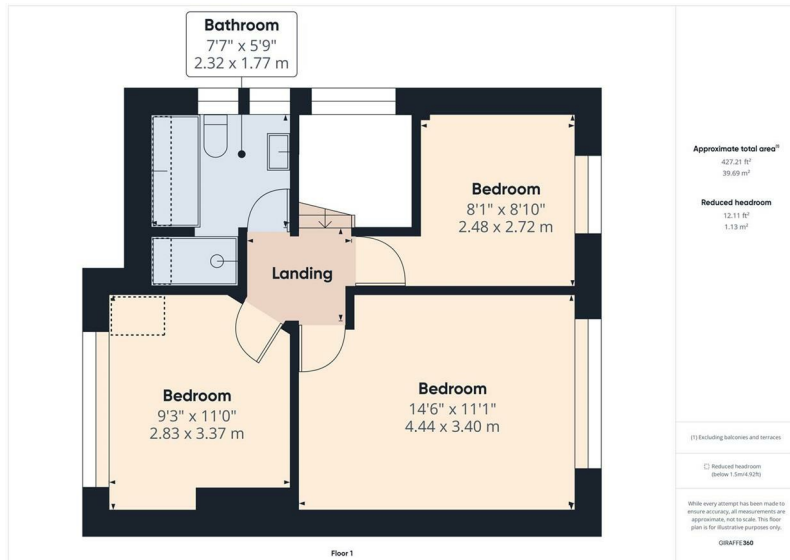
3









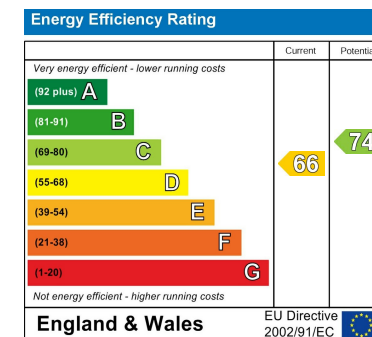


LOCAL AUTHORITY
Wyre Forest District Council

TENURE
Freehold

COUNCIL TAX BAND
C

VIEWINGS
By prior appointment only



Agents Note: Whilst every care has been taken to prepare these particulars, they are for guidance purposes only. All measurements are approximate and are for general guidance purposes only and whilst every care has been taken to ensure their accuracy, they should not be relied upon and potential buyers/tenants are advised to recheck the measurements

EDEN MIDCALF
— SALES & LETTINGS —

5 Load Street
Bewdley
DY12 2AF

01299 402392
wyreforest@edenmidcalf.co.uk
<https://www.edenmidcalf.co.uk/contact-us/>