



EDEN MIDCALF
— SALES & LETTINGS —

ASKING PRICE

£375,000

Summerfield Lane

Worcestershire, DY11 7SA

PROPERTY SUMMARY

A large two bedroom detached bungalow pleasantly situated upon a superb plot at the head of a popular cul-de-sac in Hartlebury. Offering a generous layout, together with a large gated driveway, a double garage and a beautifully laid out rear garden, including a large workshop and an open rear aspect.

2



1



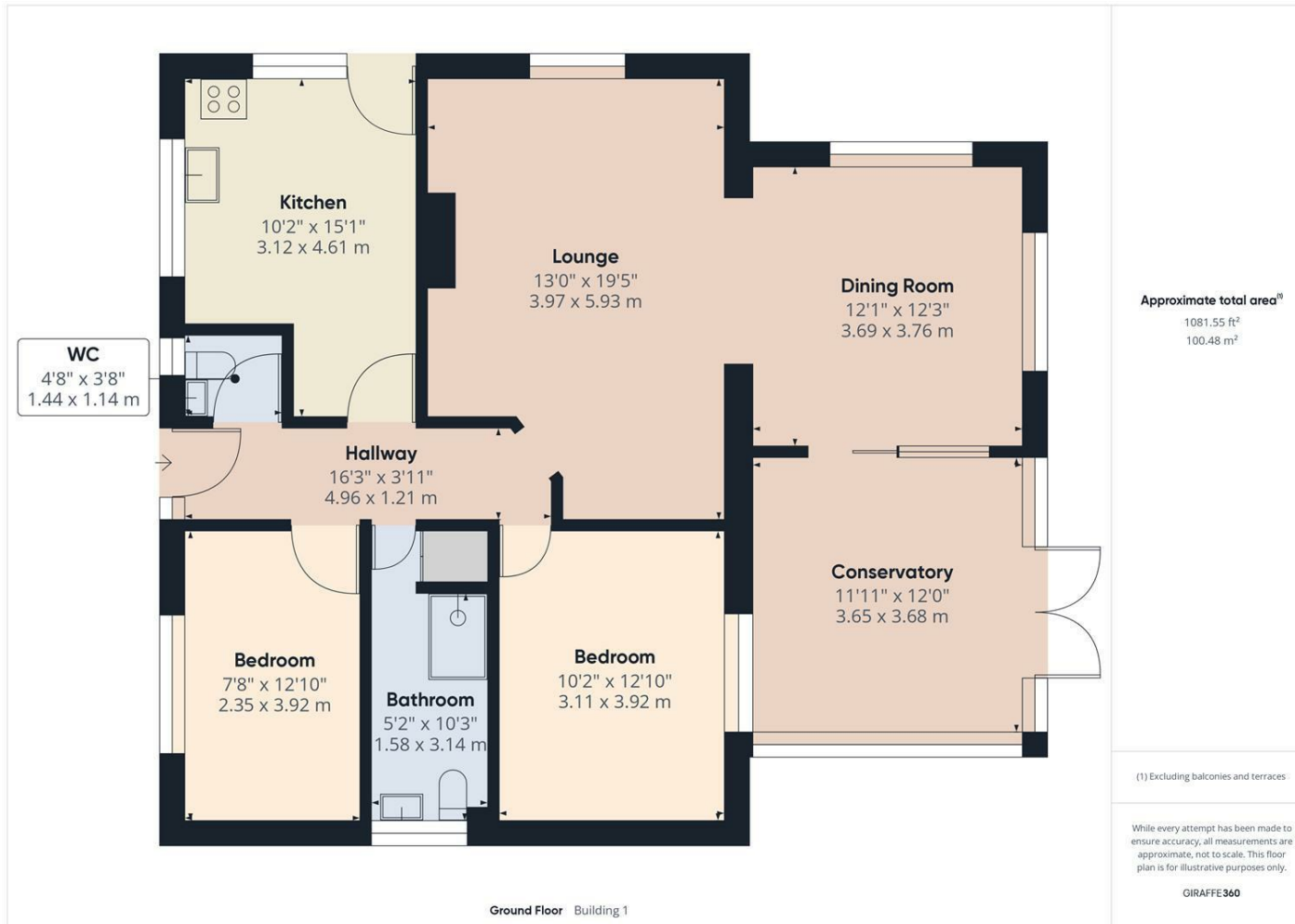
2











LOCAL AUTHORITY

TENURE

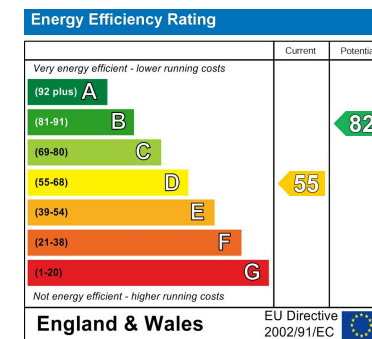
Freehold

COUNCIL TAX BAND

D

VIEWINGS

By prior appointment only



Agents Note: Whilst every care has been taken to prepare these particulars, they are for guidance purposes only. All measurements are approximate and are for general guidance purposes only and whilst every care has been taken to ensure their accuracy, they should not be relied upon and potential buyers/tenants are advised to recheck the measurements

EDEN MIDCALF
SALES & LETTINGS

5 Load Street
Bewdley
DY12 2AF

01299 402392
wyreforest@edenmidcalf.co.uk
<https://www.edenmidcalf.co.uk/contact-us/>