

A two-story brick house with a red door and a small garden. The house has a mix of red and brown bricks. The upper floor is finished with red brick tiles. There are several white-framed windows, some with flower boxes. A small tree is in the garden, and a black lamp post stands in the foreground. The sky is blue with some clouds.

EDEN MIDCALF
— SALES & LETTINGS —

OFFERS AROUND

£325,000

Pump Court, Lax Lane

Worcestershire, DY12 2DZ

PROPERTY SUMMARY

A beautifully improved period two bedroom cottage set within stunning communal gardens close to the River Severn in Bewdley. Offering a generously proportioned layout which is "ready to move into", plus communal resident off-road parking and a garage.

2



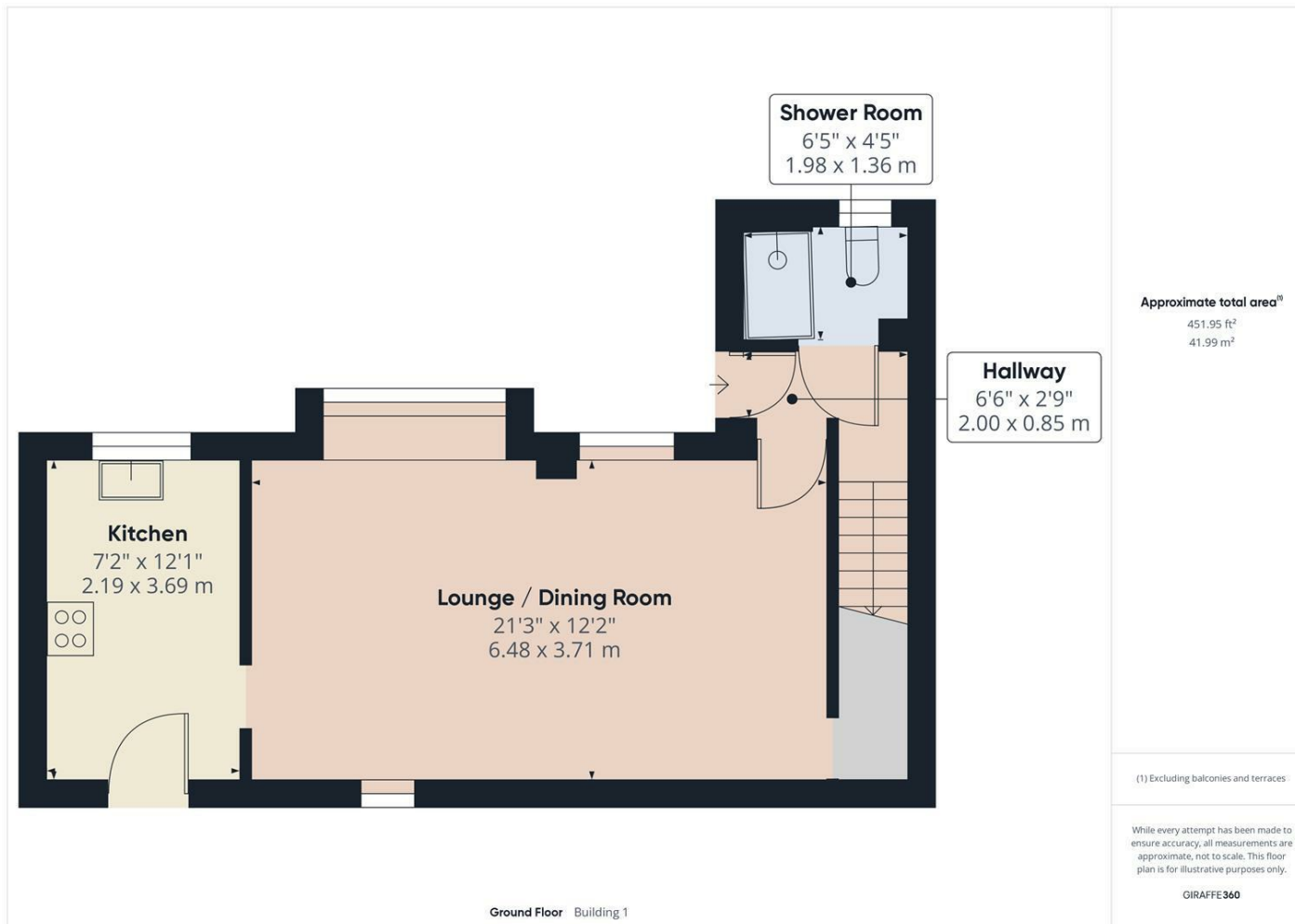
2



1







LOCAL AUTHORITY

TENURE

Freehold

COUNCIL TAX BAND

C

VIEWINGS

By prior appointment only

Energy Efficiency Rating		Current	Potential
Very energy efficient - lower running costs			
(92 plus) A			86
(81-91) B			
(69-80) C			
(55-68) D		64	
(39-54) E			
(21-38) F			
(1-20) G			
Not energy efficient - higher running costs			
England & Wales		EU Directive 2002/91/EC	

Agents Note: Whilst every care has been taken to prepare these particulars, they are for guidance purposes only. All measurements are approximate and are for general guidance purposes only and whilst every care has been taken to ensure their accuracy, they should not be relied upon and potential buyers/tenants are advised to recheck the measurements.

EDEN MIDCALF
SALES & LETTINGS

5 Load Street
Bewdley
DY12 2AF

01299 402392
wyreforest@edenmidcalf.co.uk
<https://www.edenmidcalf.co.uk/>
us/