

A two-story brick house with a red door and a small garden. The house has a mix of red and brown bricks. The upper floor is finished with red brick tiles. There are several white-framed windows, some with flower boxes. A small garden with a wooden picket fence and a black lamp post is in the foreground. A paved patio area with a table and chairs is visible on the left.

EDEN MIDCALF
— SALES & LETTINGS —

OFFERS AROUND

£325,000

Pump Court, Lax Lane

Worcestershire, DY12 2DZ

PROPERTY SUMMARY

A beautifully improved period two bedroom cottage set within stunning communal gardens close to the River Severn in Bewdley. Offering a generously proportioned layout which is "ready to move into", plus communal resident off-road parking and a garage.

2



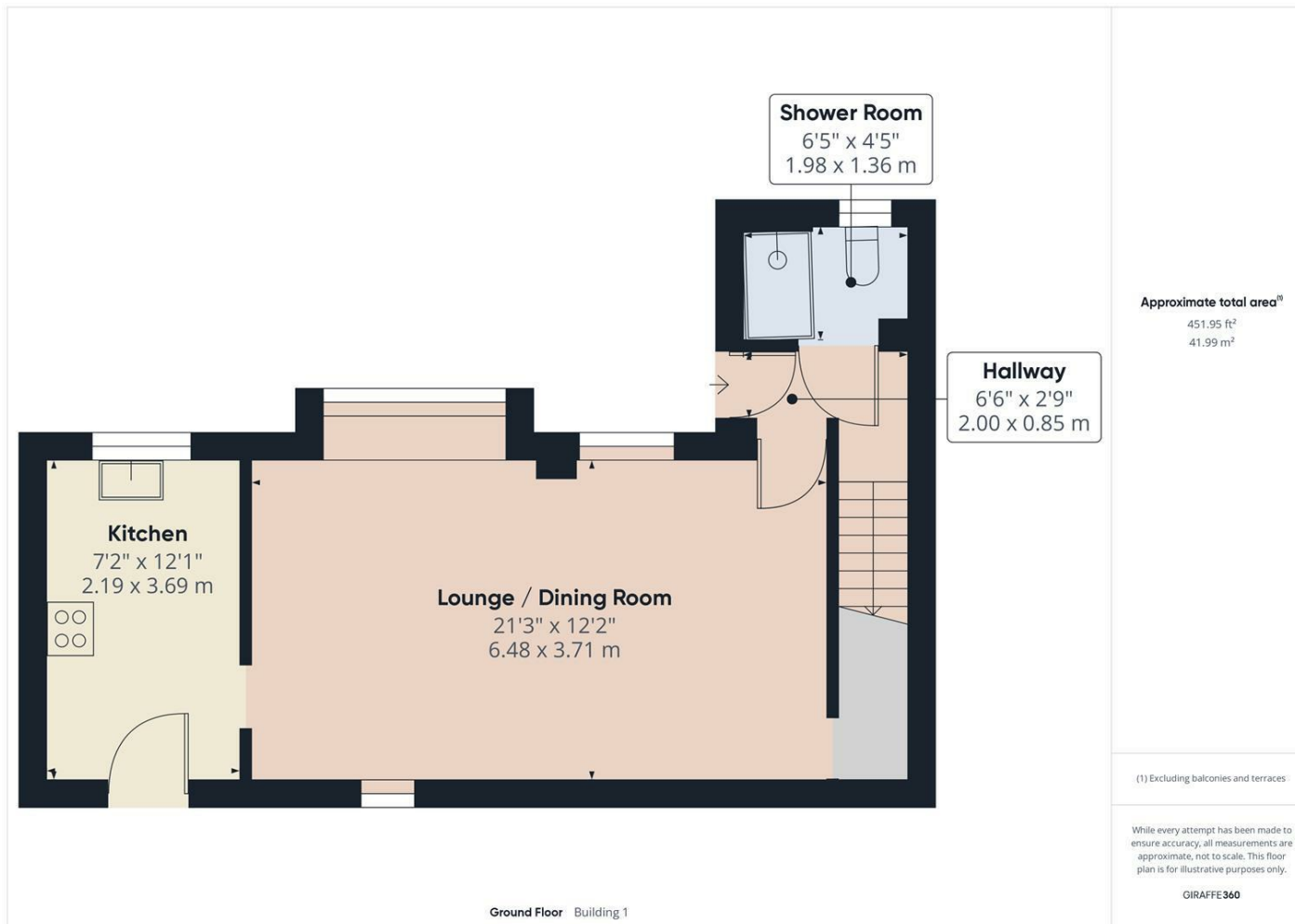
2



1







LOCAL AUTHORITY

TENURE

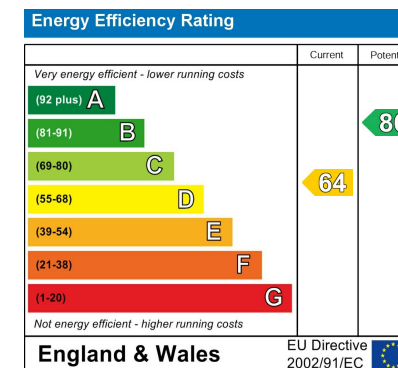
Freehold

COUNCIL TAX BAND

C

VIEWINGS

By prior appointment only



Agents Note: Whilst every care has been taken to prepare these particulars, they are for guidance purposes only. All measurements are approximate and are for general guidance purposes only and whilst every care has been taken to ensure their accuracy, they should not be relied upon and potential buyers/tenants are advised to recheck the measurements.

EDEN MIDCALF
SALES & LETTINGS

5 Load Street
Bewdley
DY12 2AF

01299 402392
wyreforest@edenmidcalf.co.uk
<https://www.edenmidcalf.co.uk/>
us/