

A two-story red brick house with a dark grey tiled roof. The house features arched windows on both floors, with white frames and multiple panes. The ground floor has a blue door with a white frame and a black door next to it. A small flower box is mounted under the window to the left of the blue door. The house is situated on a street with other buildings visible in the background.

EDEN MIDCALF
— SALES & LETTINGS —

£249,950
Westbourne Street
Worcestershire, DY12 1BS

PROPERTY SUMMARY

An attractive and well improved period two bedroom end of terrace house located just a short distance from the centre of Bewdley town. Offering a well proportioned layout including a dining kitchen, ground floor shower room, large first floor bathroom and a loft converted master bedroom.

2

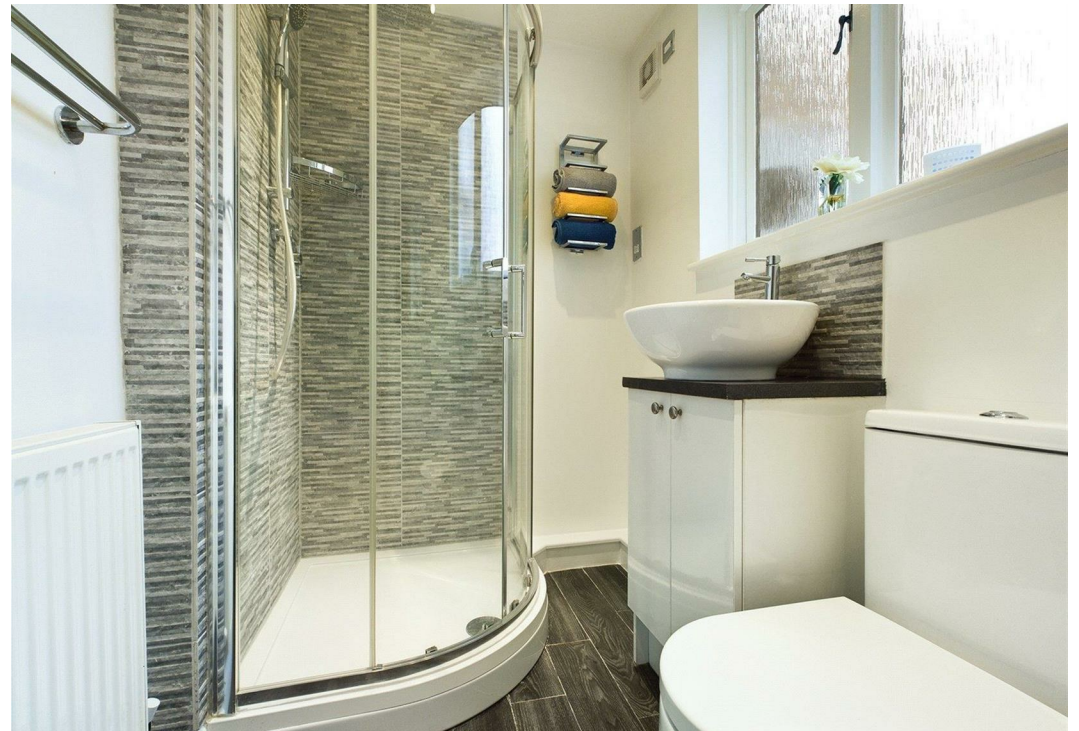


2



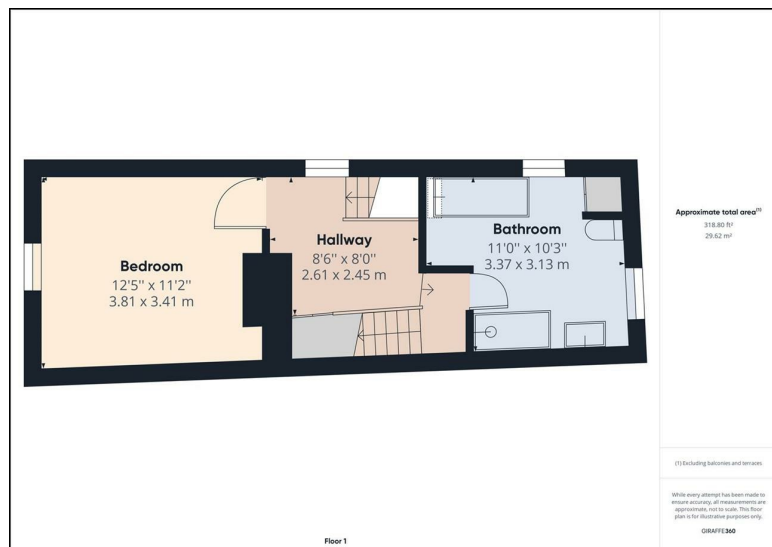
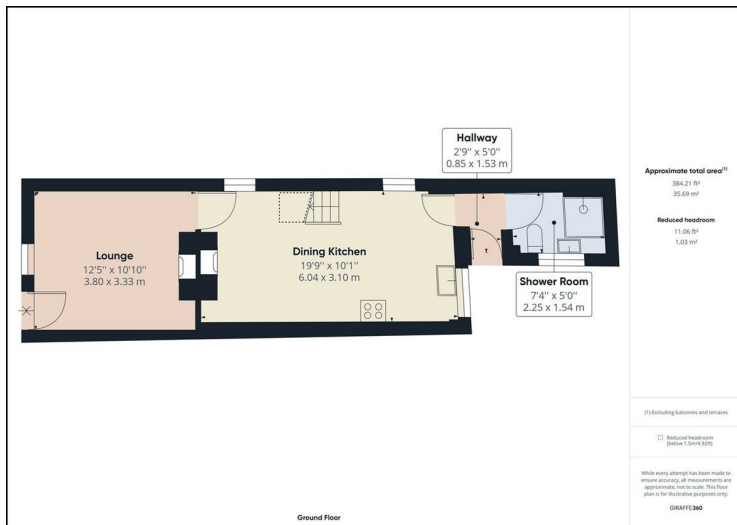
2









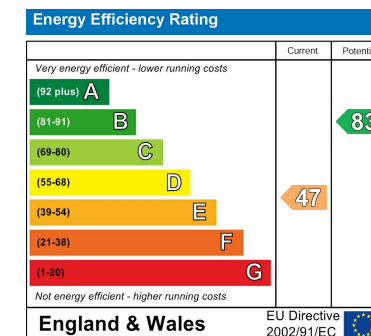


LOCAL AUTHORITY
Wyre Forest District Council

TENURE
Freehold

COUNCIL TAX BAND
C

VIEWINGS
By prior appointment only



Agents Note: Whilst every care has been taken to prepare these particulars, they are for guidance purposes only. All measurements are approximate and are for general guidance purposes only and whilst every care has been taken to ensure their accuracy, they should not be relied upon and potential buyers/tenants are advised to recheck the measurements

EDEN MIDCALF
— SALES & LETTINGS —

5 Load Street
Bewdley
DY12 2AF

01299 402392
wyreforest@edenmidcalf.co.uk
<https://www.edenmidcalf.co.uk/contact-us/>