



EDEN MIDCALF
— SALES & LETTINGS —

£199,950
Wyre Court
Bewdley, DY12 2JS

PROPERTY SUMMARY

A very large two bedroom first floor Grade II listed apartment set within a beautiful converted manor house in Wyre Court, Bewdley. Offering an incredibly generous, split-level layout with immense further potential, plus off road parking for two cars and a private, secluded rear garden.

2



1



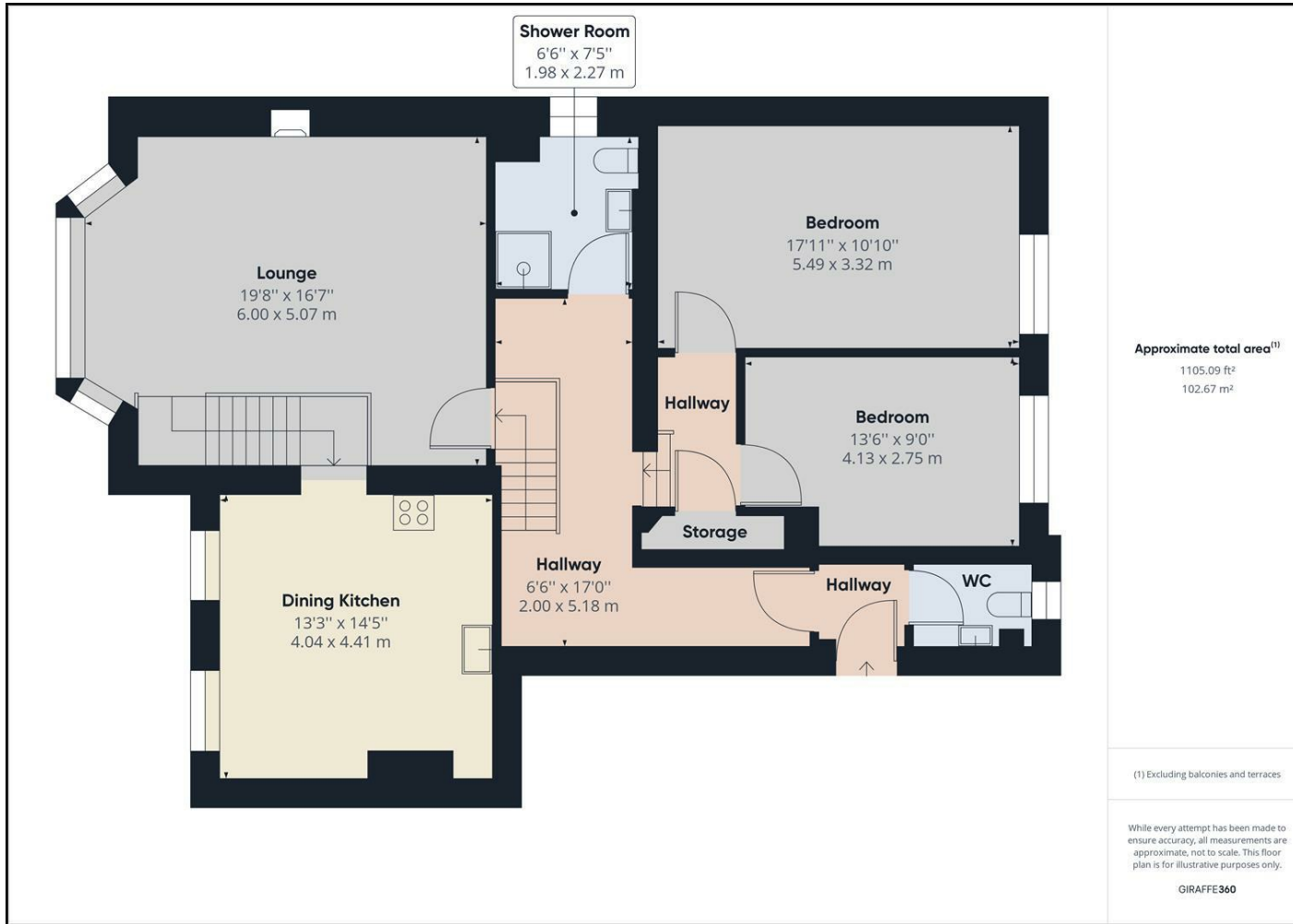
1









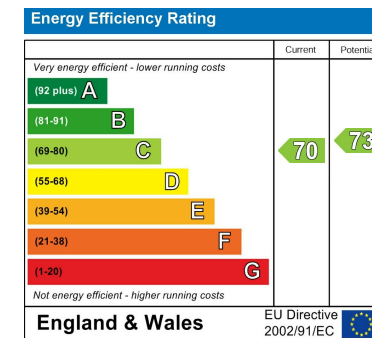


LOCAL AUTHORITY
Wyre Forest District Council

TENURE
Share of Freehold

COUNCIL TAX BAND
C

VIEWINGS
By prior appointment only



Agents Note: Whilst every care has been taken to prepare these particulars, they are for guidance purposes only. All measurements are approximate and are for general guidance purposes only and whilst every care has been taken to ensure their accuracy, they should not be relied upon and potential buyers/tenants are advised to recheck the measurements

EDEN MIDCALF
SALES & LETTINGS

5 Load Street
Bewdley
DY12 2AF

01299 402392
wyreforest@edenmidcalf.co.uk
<https://www.edenmidcalf.co.uk/contact-us/>