



£489,950

At a glance...



3



3



1

EPC

C

COUNCIL
TAX

E

**holland
& odam**

Redways
Crow Lane
Westbury-sub-Mendip
Wells
Somerset
BA5 1HB

TO VIEW

55 High Street, Wells,
Somerset BA5 2AE

01749 671020

wells@hollandandodam.co.uk



Directions

From Wells take the A371 towards Cheddar into the village of Westbury-Sub-Mendip. As you go through the village, Crow Lane is the first Right hand turn after The Westbury Inn where the property will be found on the corner.

Services

Mains electricity, gas, water and drainage are connected. Gas central heating system.

Local Authority

Somerset Council
0300 1232224
somerset.gov.uk

Tenure

Freehold



Location

Westbury-Sub-Mendip is set on the southern slopes of the Mendips between the Cathedral City of Wells and the bustling village of Cheddar. Within easy driving distance of Bristol (c.20 miles to the north). The village adjoins countryside which is classed as an area of outstanding natural beauty. A good range of both state and private schools are within easy reach of the village which itself has a primary school, shop and public house and an active village hall.

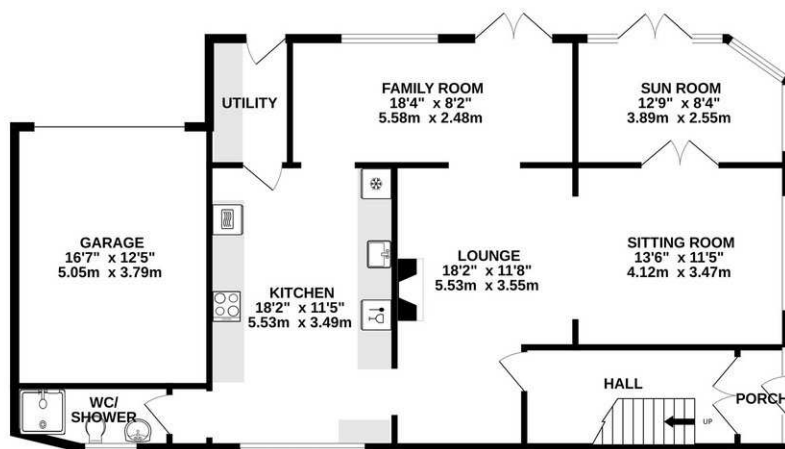
Insight

A spacious, detached property in the popular village of Westbury Sub Mendip. Having three bedrooms and a new roof terrace to enjoy the views. Having been improved over the past two years by the present owners. Ample parking for several cars and a south facing garden.

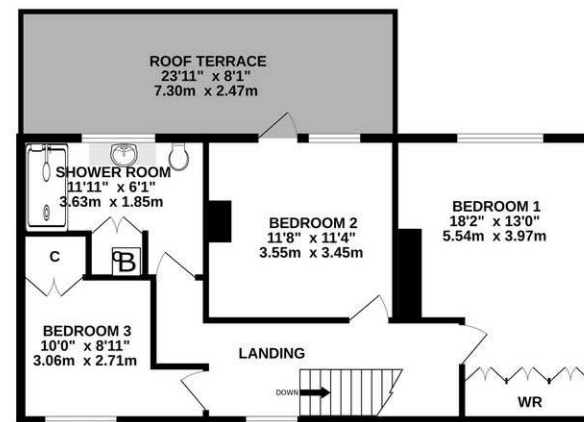
- Recently refitted kitchen with integrated appliances including dishwasher, fridge freezer, double oven and electric hob
- Utility room with space for a washing machine and tumble dryer along with a downstairs shower room
- Two year old gas combi-boiler
- Stylish family shower room with large double walk in shower
- Lovely roof terrace which has also been updated in the past year
- Three good size bedrooms with bedroom one being double aspect and having built in wardrobes
- Bedroom two has access onto the roof terrace
- Spacious, open plan sitting room with access into the conservatory and dining area
- Large south facing rear garden divided into a patio area, lawn and attractive borders



GROUND FLOOR
1208 sq.ft. (112.2 sq.m.) approx.



1ST FLOOR
655 sq.ft. (60.8 sq.m.) approx.



TOTAL FLOOR AREA : 1862 sq.ft. (173.0 sq.m.) approx.

Whilst every attempt has been made to ensure the accuracy of the floorplan contained here, measurements of doors, windows, rooms and any other items are approximate and no responsibility is taken for any error, omission or mis-statement. This plan is for illustrative purposes only and should be used as such by any prospective purchaser. The services, systems and appliances shown have not been tested and no guarantee as to their operability or efficiency can be given.
Made with Metropix ©2025

DISCLAIMER

CONSUMER PROTECTION FROM UNFAIR TRADING REGULATIONS 2008. The Agent has not tested any apparatus, equipment, fixtures and fittings or services and so cannot verify that they are in working order or fit for the purpose. A Buyer is advised to obtain verification from their Solicitor or Surveyor. References to the Tenure of a Property are based on information supplied by the Seller. The Agent has not had sight of the

title documents. A Buyer is advised to obtain verification from their Solicitor. Items shown in photographs are not included unless specifically mentioned within the sales particulars. They may however be available by separate negotiation. Buyers must check the availability of any property and make an appointment to view before embarking on any journey to see a property.

DATA PROTECTION. Personal information provided by customers wishing to receive information and/or services from the estate agent and the Property Sharing Experts (of which it is a member) for the purpose of providing services associated with the business of an estate agent but specifically excluding mailing or promotions by a third party. If you do not wish your personal information to be used for any of these purposes, please notify us.