





£365,000

To View:

Holland & Odam
55 High Street, Wells, Somerset

BA5 2AE

01749 671020
wells@hollandandodam.co.uk



3



2



2

Energy
Rating **D**

Council Tax Band
D

Services

Gas Central Heating
All main services

Local Authority

Mendip District Council
0300 3038588
mendip.gov.uk

Tenure

Freehold
£30 per month management
fees for maintenance of
communal areas





Directions

From Wells take the A371 towards Shepton Mallet. Proceed through the village of Croscombe. Immediately after the sign for Shepton Mallet take the first left into Lower Silk Mill and the property can be found in the corner of the building to the right hand side of the development.



Location

Situated in a small, ancient hamlet on the outskirts of Shepton Mallet, a pleasant historic Market Town set in the heart of the Mendips and offering a range of amenities and facilities with both junior and senior schools. Bristol c.21 miles, Bath c.18 miles and Wells c.5 miles away. Castle Cary Inter-City trains to Paddington c.8 miles.



Description

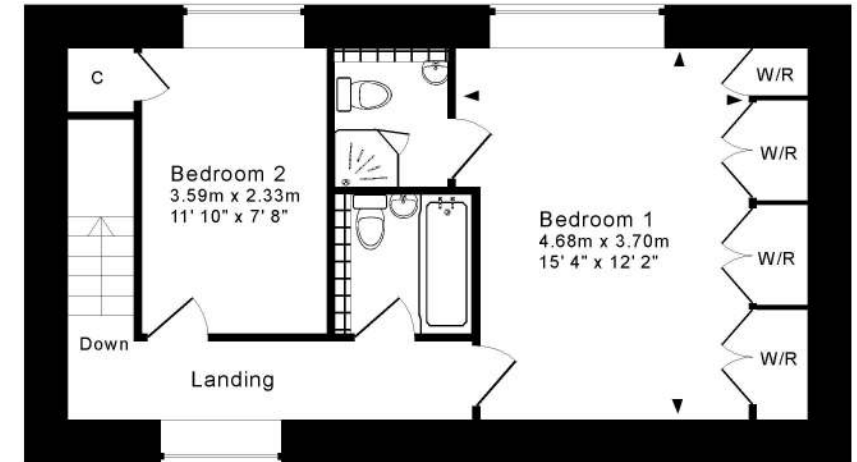
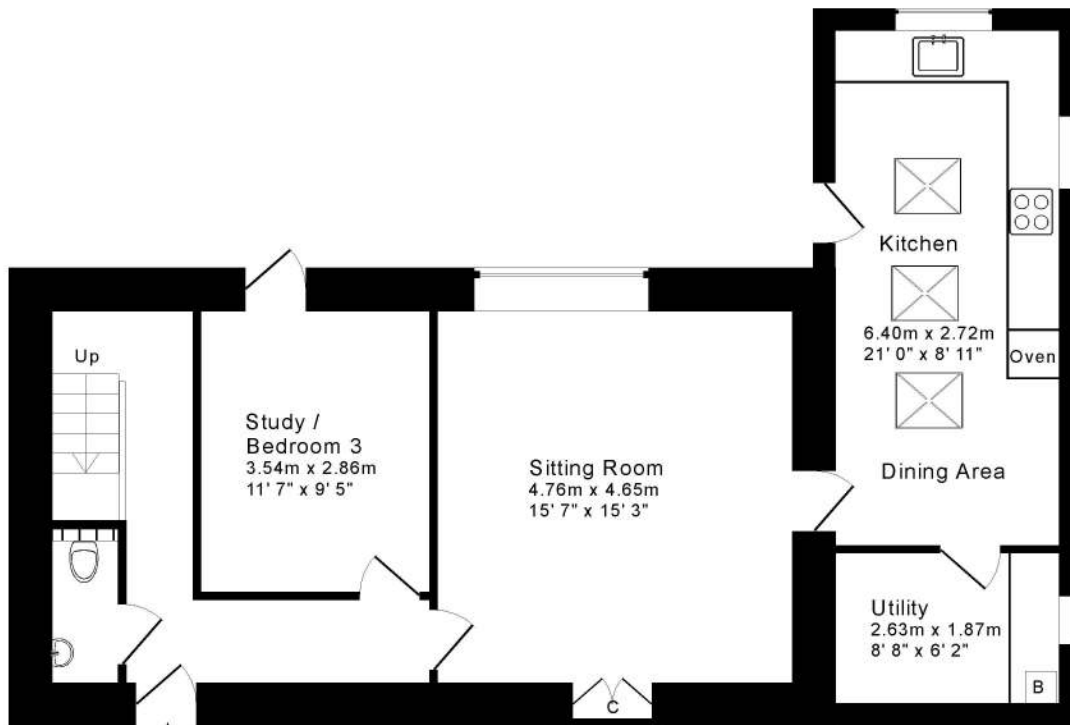
A Grade II Listed conversion of a former Silk Mill within a popular development of just nine properties. The property offers flexible accommodation (with some interesting retained features) with a low maintenance courtyard garden to the rear and two allocated parking spaces with further visitors' parking. A composite part glazed door opens into a hallway with stairs to the first floor. Off the hall is a cloakroom with W.C. and wash hand basin. As you bear to the right there is a reception room (or further bedroom) which is currently used as a work room/study. There is a door leading out onto the rear garden and a wooden floor. The final door leads from the hall into a lovely sitting room with three feature windows (fitted with plantation shutters), a feature recess and a double cupboard. There are a number of wall light points. A feature arched door takes you through to the dining kitchen with the dining area at one end and the stylish kitchen at the far end. This light and airy room has a vaulted ceiling with three skylights, windows to both sides and a door out onto the rear garden. Under the cork tiles there is a terracotta tiled floor. The custom made units have a painted wooden work surface with stainless steel inserts and incorporates an electric hob and oven and plumbing for dishwasher. At the end of this room is a utility room with a wall mounted gas fired boiler supplying central heating and hot water, plumbing for a washing machine and space for a tumble dryer with plenty of space for storage. On the first floor there are two bedrooms. The principal bedroom has an extensive range of fitted storage including wardrobes and a cupboard. There is a feature recess with mullioned surround. Also off the bedroom is an en suite shower room with quadrant shower, W.C. and wash hand basin with down lighters and extractor fan. This has been re-fitted in recent years by the current owner and includes electric underfloor heating. The second bedroom has a built in cupboard with radiator and adjacent is a family bathroom with extensive storage and a mixer shower over the bath. Of particular note throughout the property is the quality oak joinery and the plantation shutters that have been fitted to the majority of the windows.



To the front of the development there is one allocated parking space with a further allocated space across Back Lane and easily accessed from the rear garden gate. There are two visitors parking spaces at the entrance to the development. There is a communal terrace enjoying a westerly aspect and also across Back Lane there is a further area of communal garden/copse. To the rear of the property there is a private courtyard garden which has been designed for ease of maintenance with outside lighting and water tap. Extending to c.7.5m x 4.2m (23' x 13'7) with an easterly aspect.

- Grade II Listed conversion of part of a former Silk Mill
- Sought after development of nine properties
- Flexible accommodation including a reception room that could be a third bedroom
- Great dining kitchen with custom made units and a utility room to provide further storage
- Principal bedroom with en suite shower room and extensive storage
- Rear courtyard garden and use of further communal areas including a terrace to the front of the property
- Two allocated parking spaces and further visitors' spaces
- Lovely features retained throughout with quality joinery and plantation shutters to most windows





Ground Floor

For indicative purposes only.
Drawing Number : 147-0671

Copyright Jemesis Ltd 2023

First Floor

RESIDENTIAL LETTINGS : Holland & Odam offer a comprehensive residential lettings service. Whether you are a landlord or a tenant, please contact any of our offices to discuss your requirements.

FINANCIAL SERVICES : Would you like to have the opinion of a fully Independent Financial Adviser who has access to the entire mortgage market place and could help you consider all aspects of financing your proposed purchase? If so, please ring us on 01749 671020 and we can arrange a free consultation for you at a time and a place to suit you with Woodward Insurance & Mortgage Insurance Services.*

CONSUMER PROTECTION FROM UNFAIR TRADING REGULATIONS 2008 : The Agent has not tested any apparatus, equipment, fixtures and fittings or services and so cannot verify that they are in working order or fit for the purpose. A Buyer is advised to obtain verification from their Solicitor or Surveyor. References to the Tenure of a Property are based on information supplied by the Seller. The Agent has not had sight of the title documents. A Buyer is advised to obtain verification from their Solicitor. Items shown in photographs are not included unless specifically mentioned within the sales particulars. They may however be available by separate negotiation. Buyers must check the availability of any property and make an appointment to view before embarking on any journey to see a property.

DATA PROTECTION : Personal information provided by customers wishing to receive information and/or services from the estate agent and the Property Sharing Experts (of which it is a member) for the purpose of providing services associated with the business of an estate agent but specifically excluding mailing or promotions by a third party. If you do not wish your personal information to be used for any of these purposes, please notify us.

*YOUR HOME MAY BE REPOSSESSED IF YOU DO NOT KEEP UP REPAYMENTS ON YOUR MORTGAGE OR ANY OTHER DEBT SECURED ON IT. WRITTEN QUOTATIONS ARE AVAILABLE ON REQUEST.

