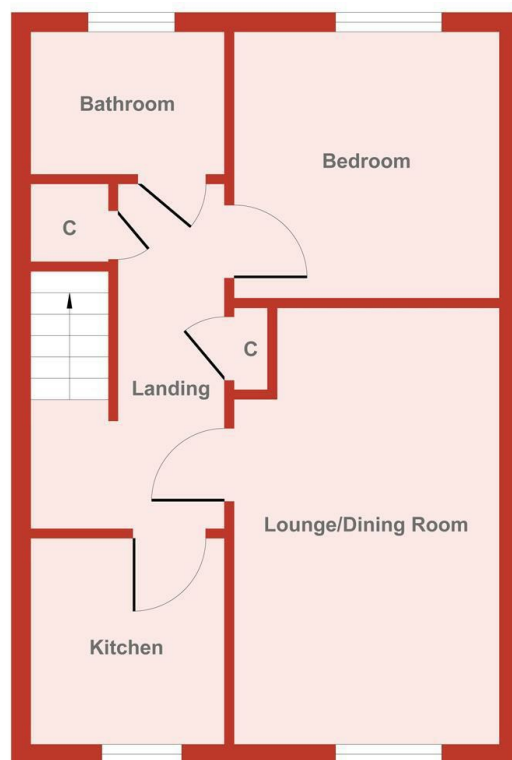




Flat 3, 9 Elmes Road, Moordown, Bournemouth, Dorset, BH9 2SX

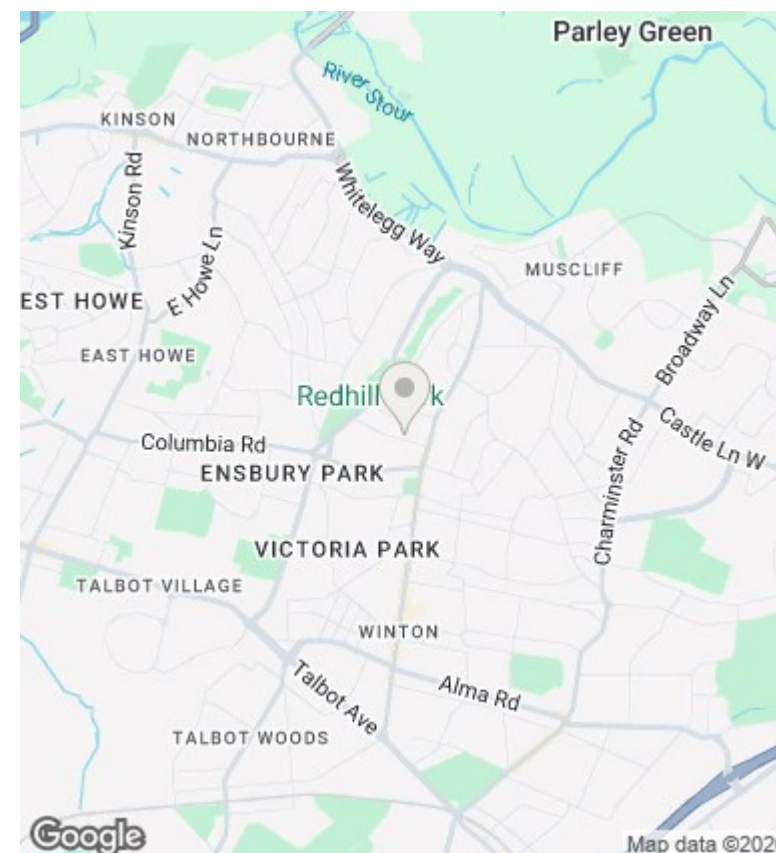
Asking Price £175,000

- One Double Bedroom
- Share Of Freehold
- Garage In Block
- No Forward Chain
- Spacious First Floor Flat
- UPVC Double Glazing
- Off Road Parking
- Private Entrance
- Gas Central Heating
- Close To Amenities & Bus Routes



Floor Plan

Produced by Elements Property



Directions

Viewings

Viewings by arrangement only. Call 01202 749390 to make an appointment.

Council Tax Band

B

EPC Rating:

D

Energy Efficiency Rating		
	Current	Potential
Very energy efficient - lower running costs		
(92 plus) A		
(81-91) B		
(69-80) C		
(55-68) D	60	61
(39-54) E		
(21-38) F		
(1-20) G		
Not energy efficient - higher running costs		
England & Wales		EU Directive 2002/91/EC