



## Bedford Road South, Poole, BH12 4PR

£312,500

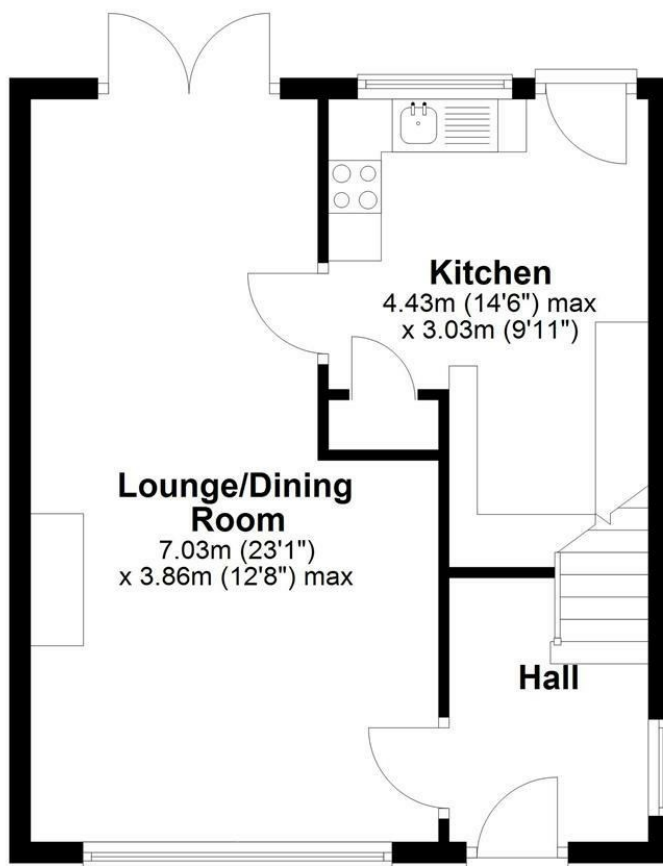
- Three Bedrooms
- UPVC Double Glazing
- Driveway With Ample Off Road Parking
- No Forward Chain
- Semi Detached House
- Gas Central Heating
- Ideal Family Home
- Well Presented
- Good Size Southerly Rear Garden
- Potential To Extend Subject To Planning Permission



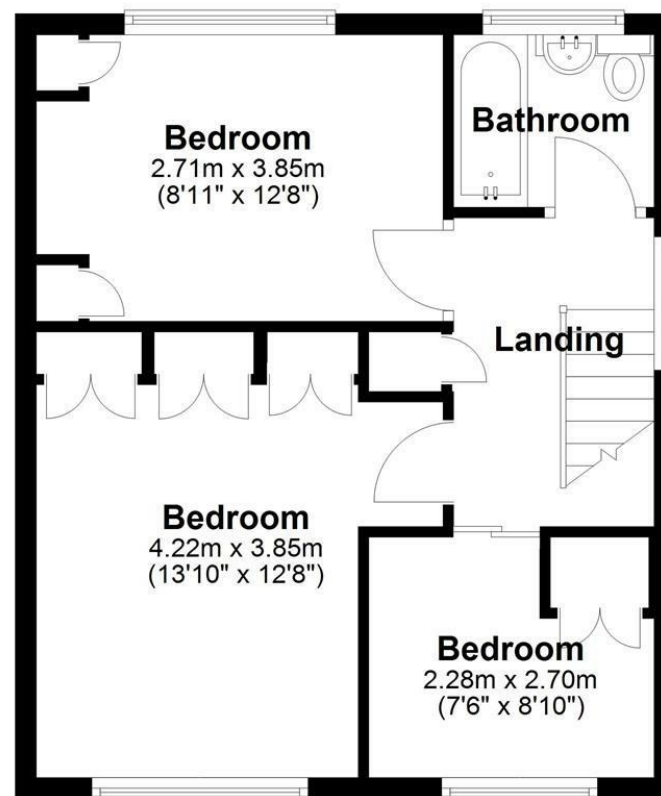
OFFERED WITH NO FORWARD CHAIN / WELL PRESENTED THREE BEDROOM SEMI-DETACHED HOUSE WITH A GOOD SIZE SOUTHERLY REAR GARDEN >>>  
Greys Estate Agents are delighted to offer for sale this well presented semi detached house situated in Bedford Road South in Alderney, Poole. The property comprises: Three bedrooms, good size lounge / dining room, kitchen and a modern family bathroom. Other benefits include UPVC double glazing, gas central heating, good size Southerly rear garden, front garden and a driveway providing off road parking.



## Ground Floor



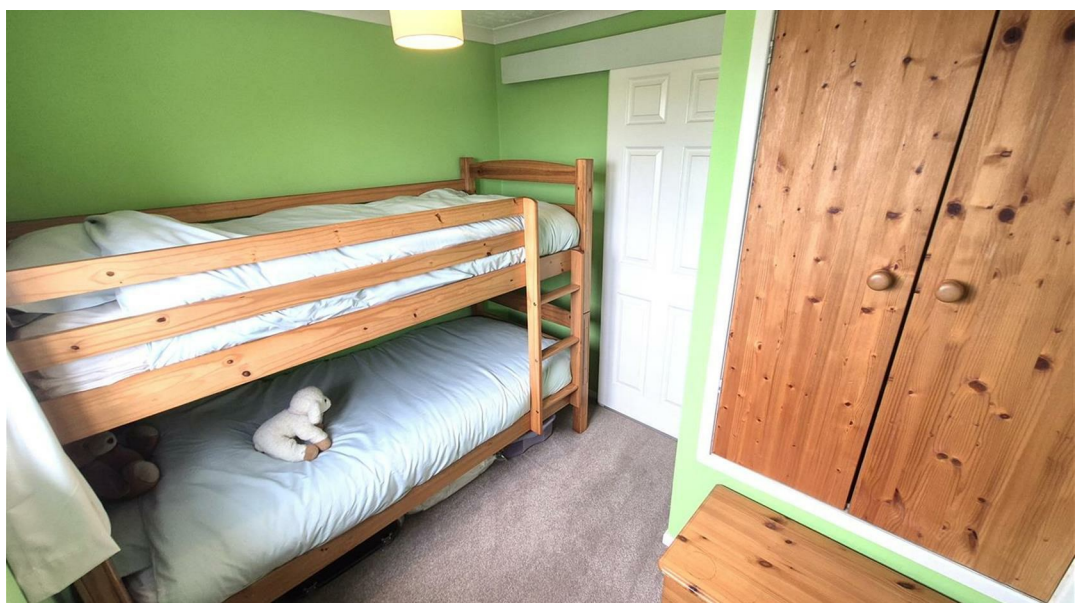
## First Floor















Viewings

Viewings by arrangement only. Call 01202 749390 to make an appointment.

Energy Efficiency Rating		
	Current	Potential
Very energy efficient - lower running costs		
(92 plus) A		
(81-91) B		83
(69-80) C		
(55-68) D	68	
(39-54) E		
(21-38) F		
(1-20) G		
Not energy efficient - higher running costs		
England & Wales		EU Directive 2002/91/EC

