



Dolbery Road North, Poole, BH12 4PU

Asking Price

£329,950

- Three Bedrooms
- Corner Plot Position
- Ample Off-Road Parking
- Close To Canford Nature Reserve
- Gas Central Heating
- Semi-Detached House
- Front & Rear Gardens
- Well Presented Throughout
- UPVC Double Glazing
- Viewings Recommended!

Dolbery Road North, Alderney, Poole, BH12 4PU

THREE BEDROOM SEMI-DETACHED HOUSE WITH AMPLE OFF-ROAD PARKING / FRONT AND REAR GARDENS / WELL PRESENTED THROUGHOUT >>> Greys Estate Agents are pleased to offer for sale this three bedroom semi-detached house in Dolbery Road North, Poole. The property comprises; Three bedrooms, good sized kitchen, open plan lounge/diner and modern shower room. Further benefits include both front and rear gardens, driveway providing ample off-road parking, a shed come utility room, UPVC double glazing and gas central heating. For further information, or to arrange a viewing please contact Greys of Parkstone.



Council Tax Band: B



Lounge/Diner
(5.00m x 4.75m)

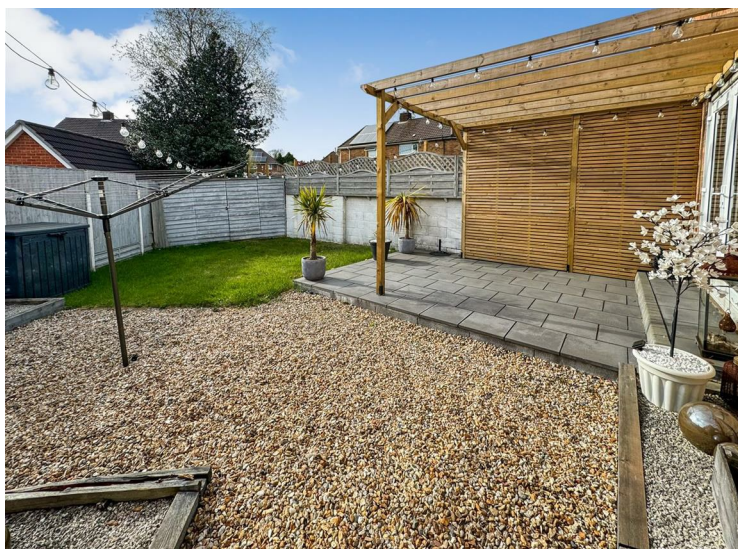
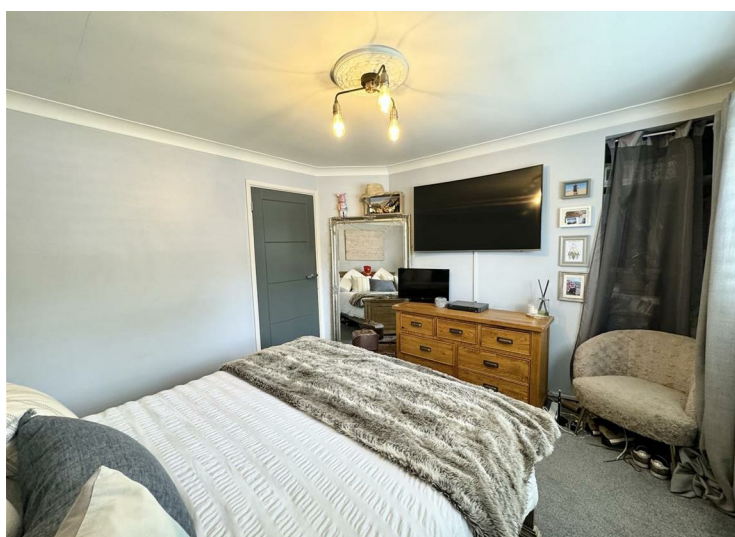
Kitchen
(4.50m x 2.40m) Max

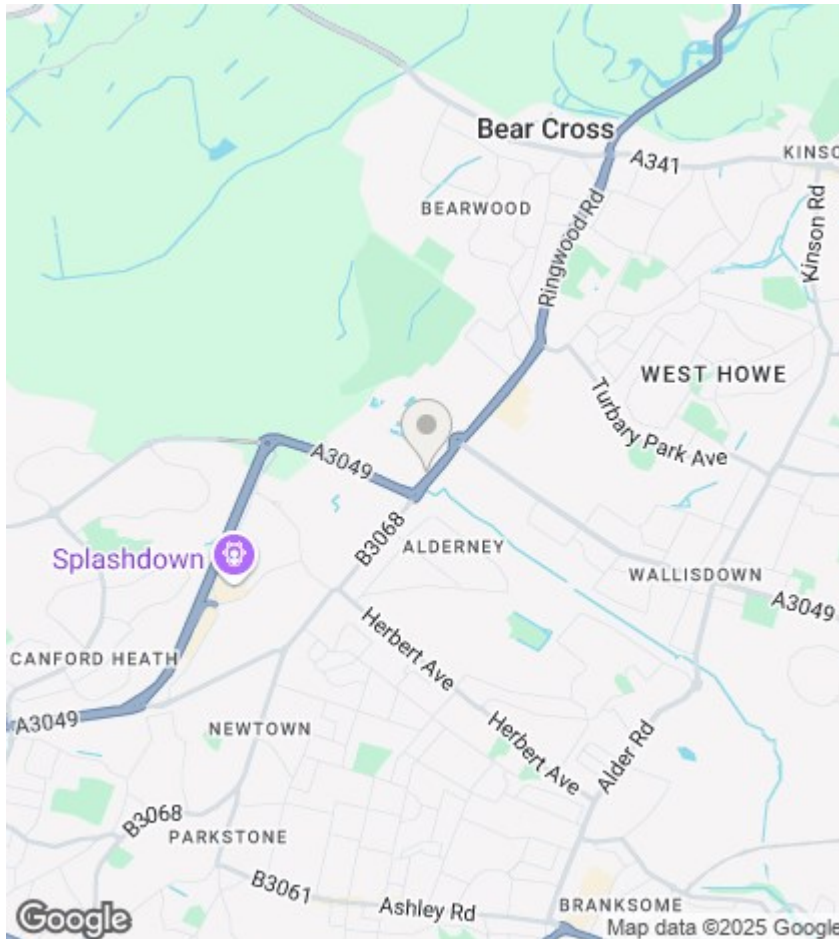
Bedroom One
(3.75m x 3.35m)

Bedroom Two
(3.40m x 2.80m)

Bedroom Three
(3.35m x 1.85m)

Shower Room
(2.45m x 2.30m)





Agents Note

Whilst every attempt has been made to ensure the accuracy of details and measurements contained in these particulars, they are not to be relied upon especially when potential cost could be incurred.

No appliances have been tested so the agent cannot verify that they are in working order.

The agent has not seen any legal documentation to verify the legal status of the property. This must be verified by your chosen solicitor.

Viewings

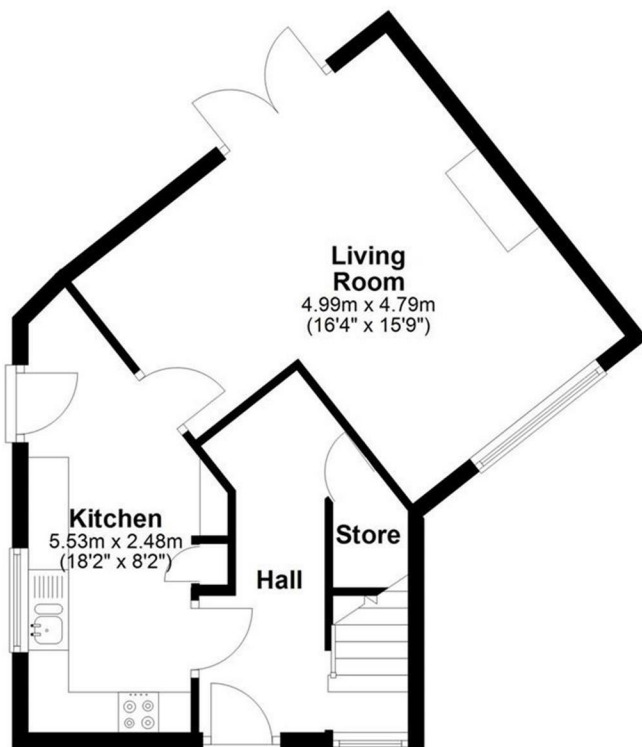
Viewings by arrangement only. Call 01202 749390 to make an appointment.

EPC Rating:

D

Energy Efficiency Rating		Current	Potential
Very energy efficient - lower running costs			
(92 plus) A			85
(81-91) B			
(69-80) C		65	
(55-68) D			
(39-54) E			
(21-38) F			
(1-20) G			
Not energy efficient - higher running costs			
England & Wales		EU Directive 2002/91/EC	

Ground Floor



First Floor

