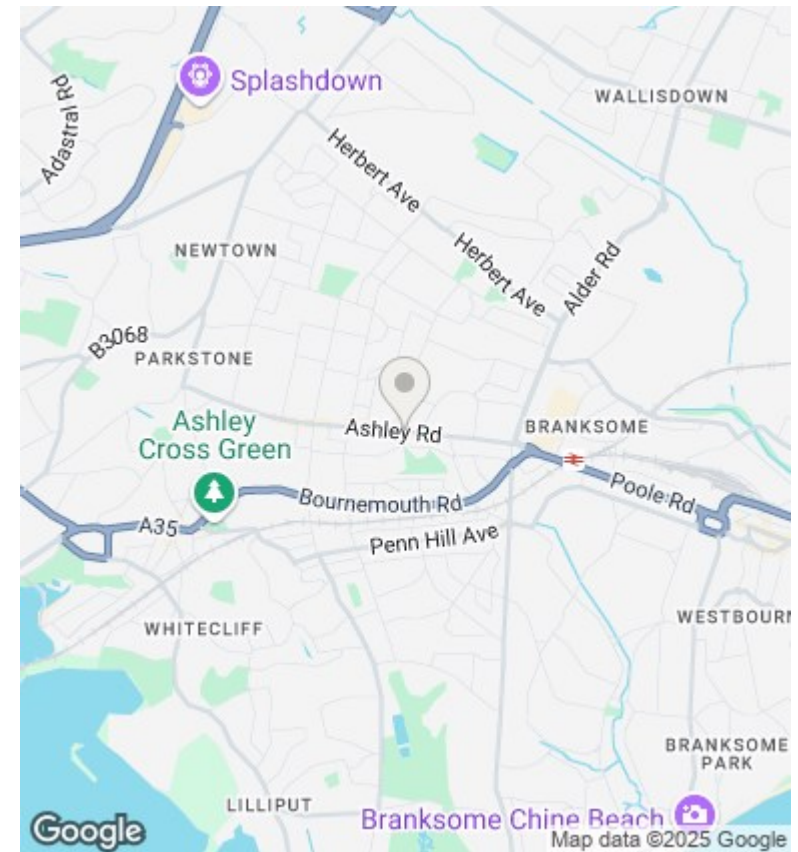
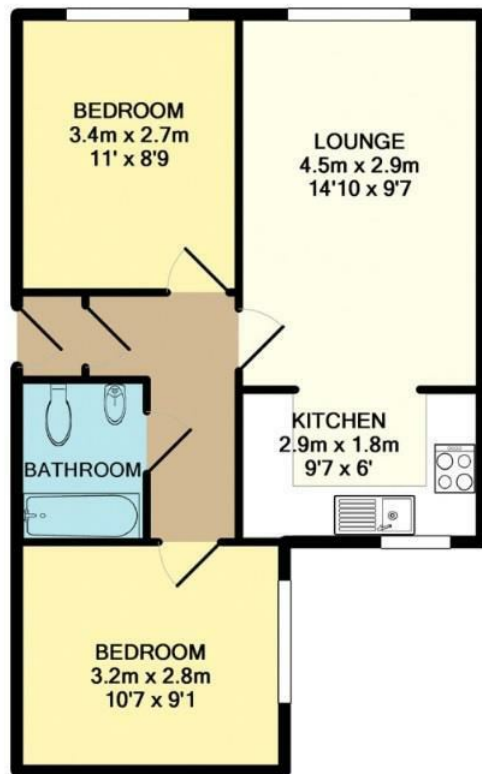




Flat 1 Ashley Court 274 Ashley Road, Poole, BH14 9BZ

£174,950

- Two Bedrooms
- UPVC Double Glazing
- Ideal FTB / Buy To Let
- No Forward Chain
- Ground Floor Flat
- Gas Central Heating
- Close To Amenities & Bus Routes
- Well Presented
- Phone Entry System
- Off Road Parking



Directions

Viewings

Viewings by arrangement only. Call 01202 749390 to make an appointment.

Council Tax Band

EPC Rating:

C

Energy Efficiency Rating		
	Current	Potential
Very energy efficient - lower running costs		
(92 plus) A		
(81-91) B	78	78
(69-80) C		
(55-68) D		
(39-54) E		
(21-38) F		
(1-20) G		
Not energy efficient - higher running costs		
England & Wales	EU Directive 2002/91/EC	