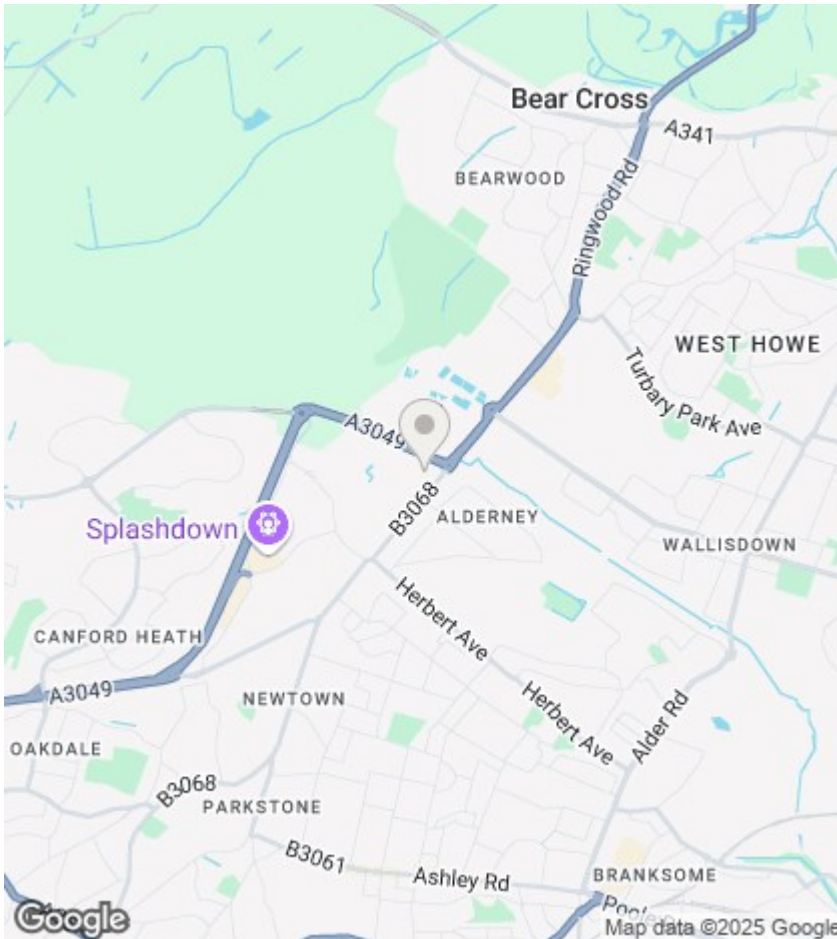




Hudson Close, Poole, BH12 4PT

Asking Price £285,000

- Unfinished Project
- Good Size Garden
- Cul-De-Sac Location
- Great Opportunity
- Semi Detached House
- Ideal For A Builder
- No Forward Chain
- Early Viewing Advised



Directions

Viewings

Viewings by arrangement only. Call 01202 749390 to make an appointment.

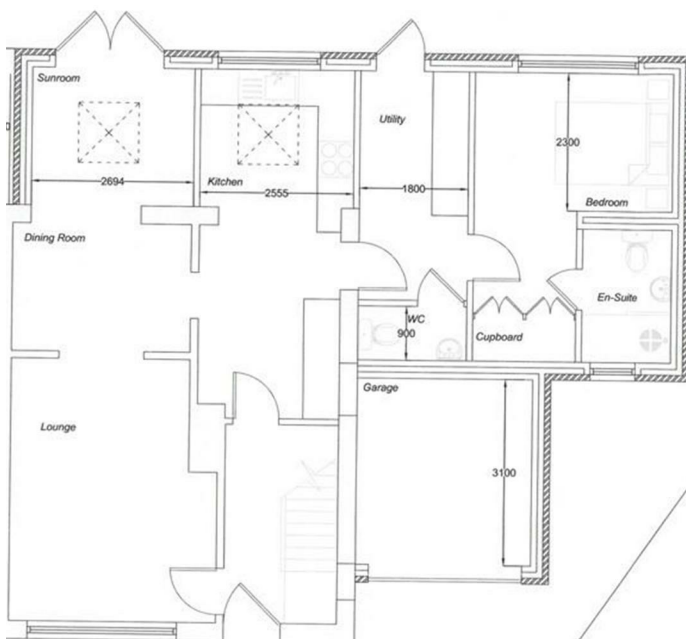
Council Tax Band:

B

EPC Rating:

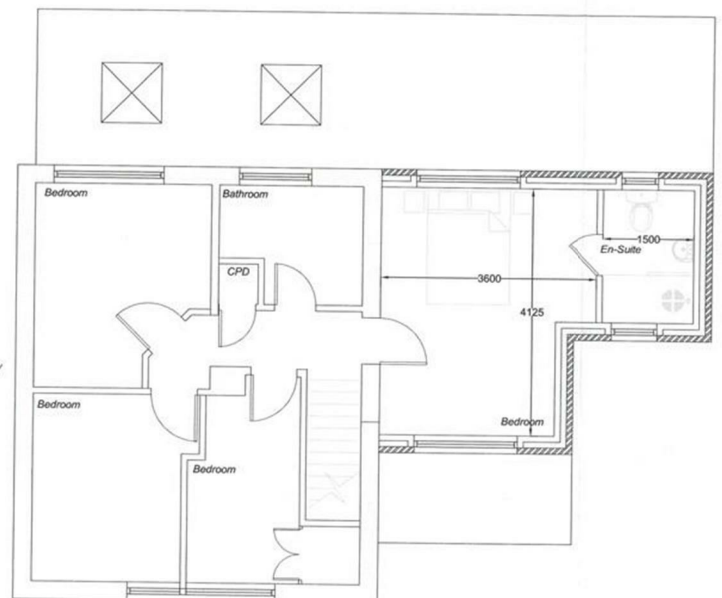
E

Energy Efficiency Rating		
	Current	Potential
Very energy efficient - lower running costs		
(92 plus) A		
(81-91) B		
(69-80) C		
(55-68) D		
(39-54) E	41	70
(21-38) F		
(1-20) G		
Not energy efficient - higher running costs		
England & Wales		
EU Directive 2002/91/EC		



Proposed Ground Floor Plan
1:50

Guide Only



Proposed First Floor Plan
1:50