



Southill Court, 41 - 43 Southill Road, Poole, BH12 3AW

£230,000

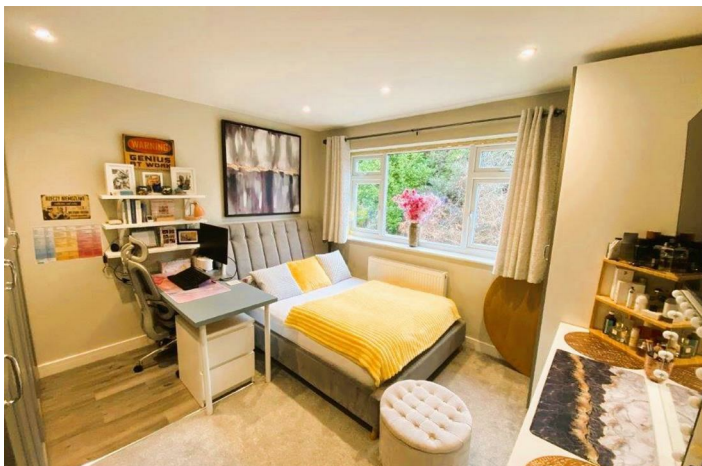
- Two Bedrooms
- Superbly Presented
- Balcony
- Quiet Location
- Loft Space
- First Floor Apartment
- Garage
- Modern Kitchen & Bathroom
- Remainder of 999 Year Lease
- Early Viewing Strongly Recommended!

Southill Court, 41-43 Southill Road, Poole BH12 3AW

AN EXEMPLARY TWO BEDROOM HOME / SUPERB KITCHEN & BATHROOM / GARAGE / QUIET SETTING >>> Greys Estate Agents are delighted to offer for sale this very well presented purpose built first floor flat situated in a quiet location. Accommodation comprises: communal entrance hall with access to a balcony , entrance hall with access to good size loft storage area , lounge / diner , two bedrooms, modern kitchen and bathroom. Features include gas central heating, double glazing, good size communal gardens , parking and garage. For further information, or to arrange a viewing, please contact Greys of Parkstone.



Council Tax Band: B



Entrance Hall

Lounge / Diner

16'0" x 11'9" (4.9m x 3.6m)

Kitchen

9'6" x 8'10" (2.9m x 2.7m)

Bedroom One

11'9" x 11'9" (3.6m x 3.6m)

Bedroom Two

11'9" x 7'6" (3.6m x 2.3m)

Bathroom

9'6" x 7'2" (2.9m x 2.2m)

Balcony

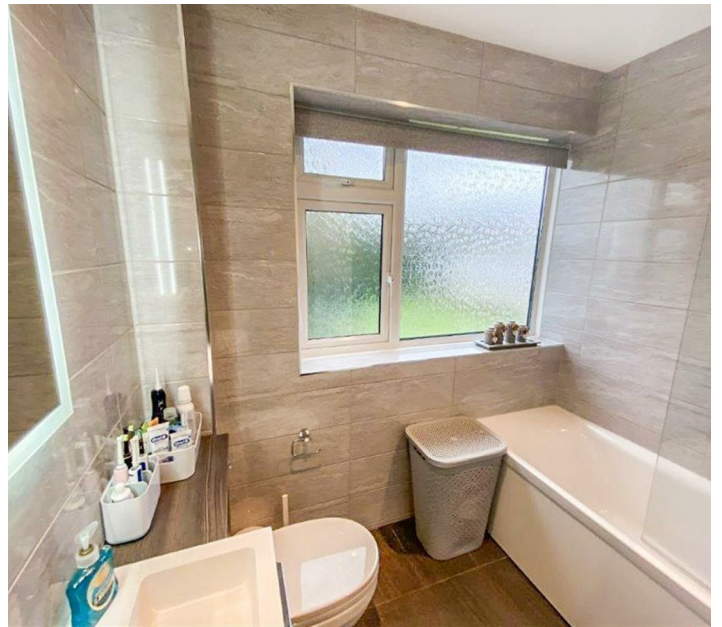
Garage

Tenure

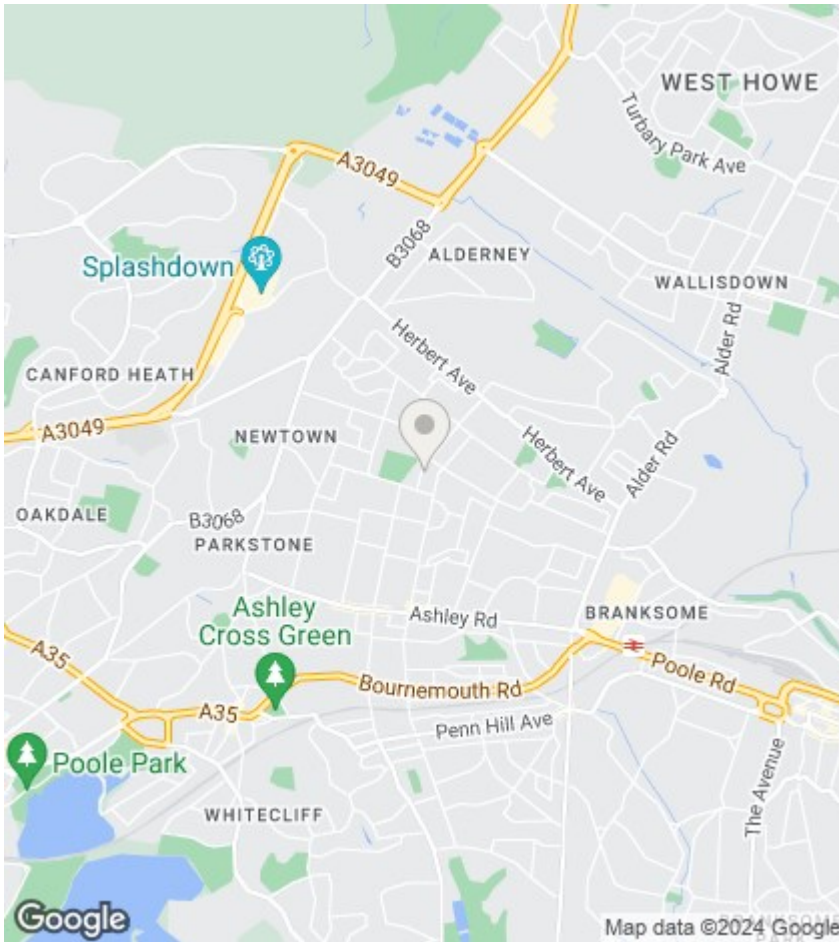
Leasehold with a 999 year lease from 1971

Service Charge - Approx. £100 / pcm

Council Tax - Band B







Directions

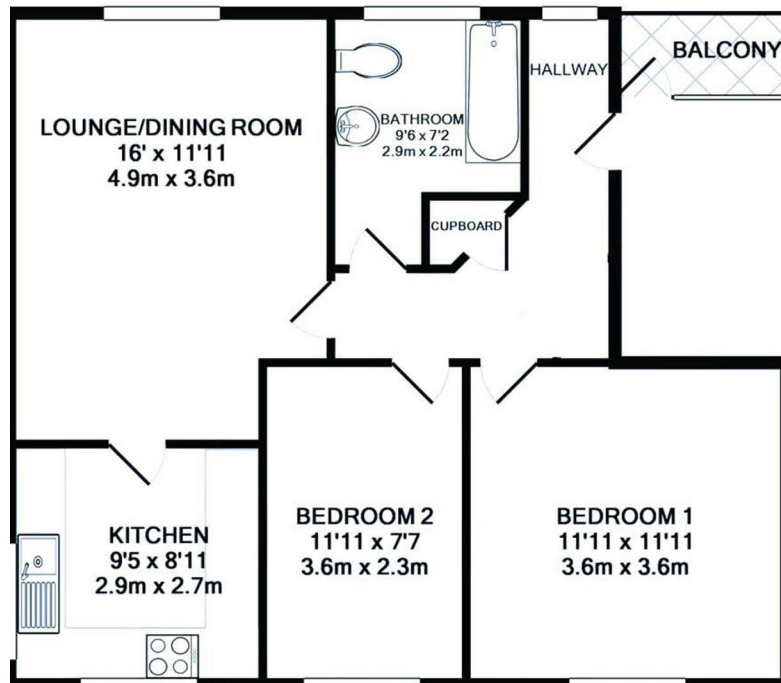
Viewings

Viewings by arrangement only. Call 01202 749390 to make an appointment.

EPC Rating:

D

Energy Efficiency Rating		Current	Potential
Very energy efficient - lower running costs			
(92 plus) A			
(81-91) B			
(69-80) C			
(55-68) D		64	74
(39-54) E			
(21-38) F			
(1-20) G			
Not energy efficient - higher running costs			
England & Wales		EU Directive 2002/91/EC	



TOTAL APPROX. FLOOR AREA 635 SQ.FT. (59.0 SQ.M.)

Whilst every attempt has been made to ensure the accuracy of the floor plan contained here, measurements of doors, windows, rooms and any other items are approximate and no responsibility is taken for any error, omission, or mis-statement. This plan is for illustrative purposes only and should be used as such by any prospective purchaser. The services, systems and appliances shown have not been tested and no guarantee as to their operability or efficiency can be given

Made with Metropix ©2019