



Commercial Road, Lower Parkstone, Poole, BH14 0HR

Fixed Asking Price

- Two Bedrooms
- Vendor Suited
- Underground Allocated Parking
- Open Plan Lounge / Kitchen / Diner
- Gas Central Heating

- End Of Terrace House
- Immaculate Presentation
- Situated Within Ashley Cross
- UPVC Double Glazing
- Viewings Recommended!

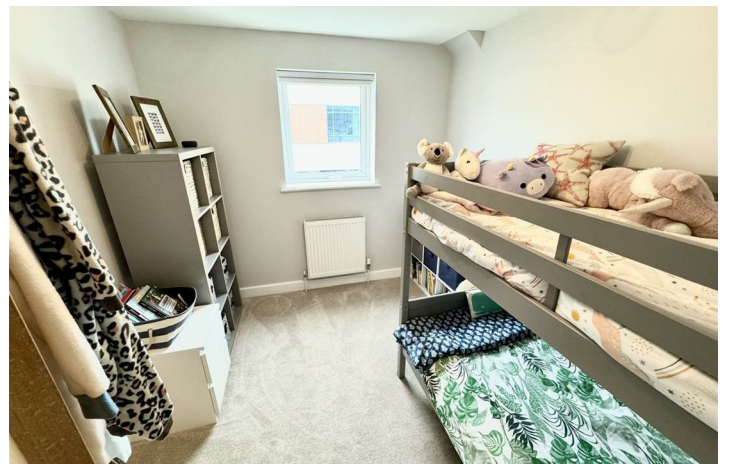
£299,950

Park Villas, Commercial Road, Poole, BH14 0HR

VENDOR SUITED / TWO BEDROOM END OF OF TERRACE HOUSE / LOWER PARKSTONE LOCATION WITHIN ASHLEY CROSS >>> Greys Estate Agents are delighted to offer for sale this immaculate two bedroom end of terrace house situated aback from Commercial Road in Lower Parkstone, Poole. The property comprises; Two bedrooms, open plan lounge / kitchen / diner, downstairs cloakroom, ample storage, and family bathroom. Further benefits include an underground allocated parking space, UPVC double glazing, gas central heating, and use of communal gardens. For further information, or to arrange a viewing, please contact Greys of Parkstone.



Council Tax Band: C



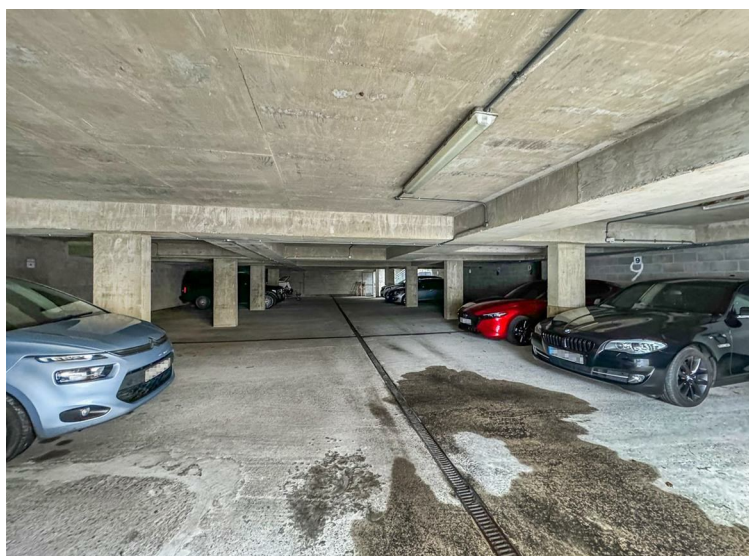
Lounge / Kitchen / Diner
(6.90m x 3.30m) Max

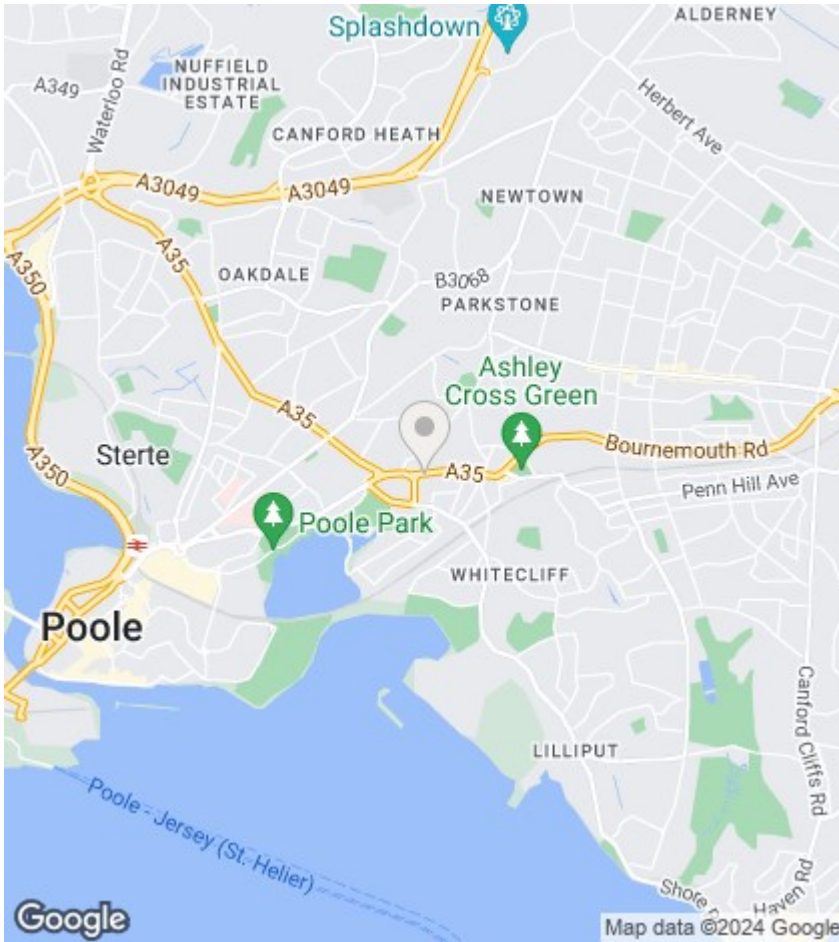
Cloakroom
(2.05m x 1.25m) Max

Bedroom One
(3.30m x 2.85m)

Bedroom Two
(3.30m x 2.60m) Max

Bathroom
(2.20m x 1.80m)





Directions

N/A

Viewings

Viewings by arrangement only. Call 01202 749390 to make an appointment.

EPC Rating:

C

Energy Efficiency Rating		Current	Potential
Very energy efficient - lower running costs			
(92 plus) A			90
(81-91) B			
(69-80) C		74	
(55-68) D			
(39-54) E			
(21-38) F			
(1-20) G			
Not energy efficient - higher running costs			
England & Wales		EU Directive 2002/91/EC	

