

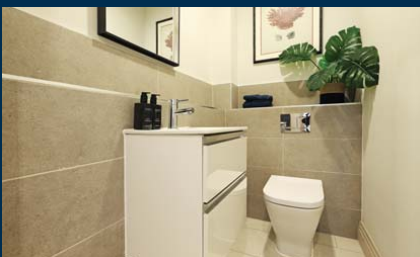
DE CLARE COURT  
AT MERSTON MANOR

WALTON ON THE HILL



Number  
**5**

Elevated living by —  
**— DESIGN**



Internal images are indicative only.

Ready to move into now.  
**Luxurious apartments in a peaceful gated setting.**

Situated at the heart of Merston Manor, a tree-lined private gated development, De Clare Court apartments are as attractive outside as they are inside. Made up of just 10 two and three bedroom properties, you will find a variation of modern, spacious open-plan layouts, whilst the mature setting includes sweeping communal gardens.

**Apartment No.5 - home highlights.**

- Located on the first floor • Lift access • Spacious open-plan living space
- Two double bedrooms • Each with en suite and fitted wardrobes • Underfloor heating
- Car barn parking • EV charging point



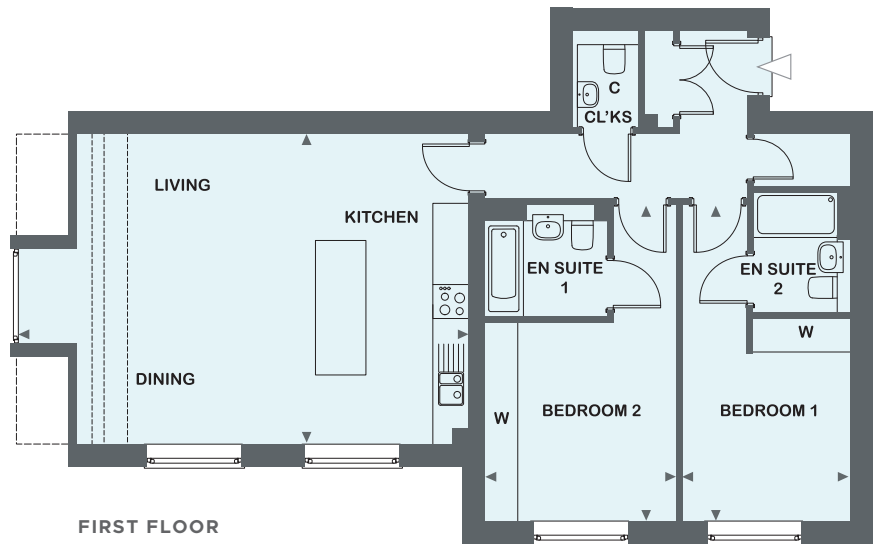
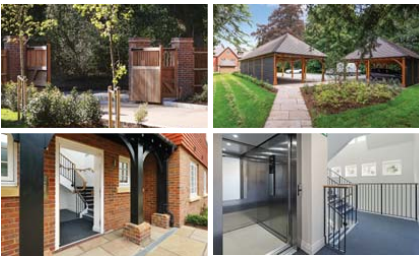
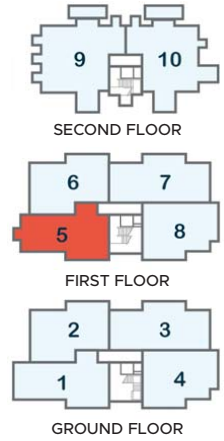
**ELIVIA**  
— HOMES —

SELLING AGENT

*Kennedy's*

CHEQUERS LANE, WALTON ON THE HILL, SURREY. KT20 7QJ  
LEARN MORE ABOUT ALL OF OUR DEVELOPMENTS AT [WWW.ELIVIAHOMES.CO.UK](http://WWW.ELIVIAHOMES.CO.UK)

Kitchen/Living/Dining	7.87m x 5.54m	25'11" x 18'2"
Bedroom 1	5.63m* x 3.44m	18'6" x 11'3"
Bedroom 2	5.63m* x 2.99m	18'6" x 9'10"
<b>Total Area</b>	<b>92.6m<sup>2</sup></b>	<b>996.74ft<sup>2</sup></b>



Number  
**5**

PLEASE ASK FOR PRICES AND AVAILABILITY.  
07790 619079 - merstonmanor@eliviahomes.co.uk  
MAKE YOUR APPOINTMENT TO VIEW  
THE SHOW APARTMENTS.



CONSUMER  
CODE FOR  
HOME BUILDERS

www.consumercode.co.uk

Protection for new-build  
home buyers



ELIVIA  
— HOMES —

CHEQUERS LANE, WALTON ON THE HILL, SURREY. KT20 7QJ  
LEARN MORE ABOUT ALL OF OUR DEVELOPMENTS AT [WWW.ELIVIAHOMES.CO.UK](http://WWW.ELIVIAHOMES.CO.UK)

Plans are not to scale. Dimensions are for guidance only and coincide with the arrow positions within rooms.  
Measurements are shown to the nearest 1cm. \*indicates maximum measurement. Internal images are indicative only.