



Trent Place Warwick CV34 5FW

for sale offers over
£220,000



Property Description

A well presented two bedroom apartment, ideally situated between Warwick and Royal Leamington Spa. The property comprises, entrance hall, spacious lounge diner with a balcony looking over stunning greenery, separate modern kitchen with integrated appliances, two double bedroom and a family bathroom. Bedroom one benefits from a built in wardrobe and an ensuite. The property also comes with allocated parking and there is no onward chain.

Trent Place is well located for accessing local shops and amenities, it is only a short walk to the Tesco superstore, pubs, restaurants and more! The location is also perfect for good schooling, there are several good schools within a short walking distance including Emscote Infant School, Myton School and more! The property is also well located for national commuters as it is only a short drive to the A46, M40 and Warwick Parkway.

The property is within a short 5 minute drive or 25 minute walk of Warwick Town Centre and its famous Warwick Castle. Warwick is a market town which offers a great selection of High Street & independent shops as well as a wide range of restaurants, bars and coffee shops. The property is also ideal for easy access into Leamington Spa and all its shops and amenities.

Entrance Hall

Spacious hallway, airing cupboard, spotlights and carpeted flooring.

Lounge

18' 4" x 12' 2" plus bay window (5.59m x 3.71m plus bay window)

Double glazed window to side, balcony with lovely views and carpeted flooring.

Kitchen

13' x 7' 6" (3.96m x 2.29m)

Fitted with a range of wall and base units with work surface over, built in appliances including; oven, hob, extractor fan. Tiled flooring, spotlights and built in washer dryer and fridge freezer.

Bedroom One

10' 7" x 10' 1" (3.23m x 3.07m)

Double glazed window to side, wardrobes and carpeted flooring.

Ensuite

Tiled flooring and walls, spotlights, WC, wash hand basin, double shower and extractor fan.

Bedroom Two

10' 1" x 7' 10" (3.07m x 2.39m)

Double glazed window to side and carpeted flooring.

Bathroom

WC, wash hand basin, tiled flooring and walls, spotlights, towel rail, shower over bath and extractor fan.

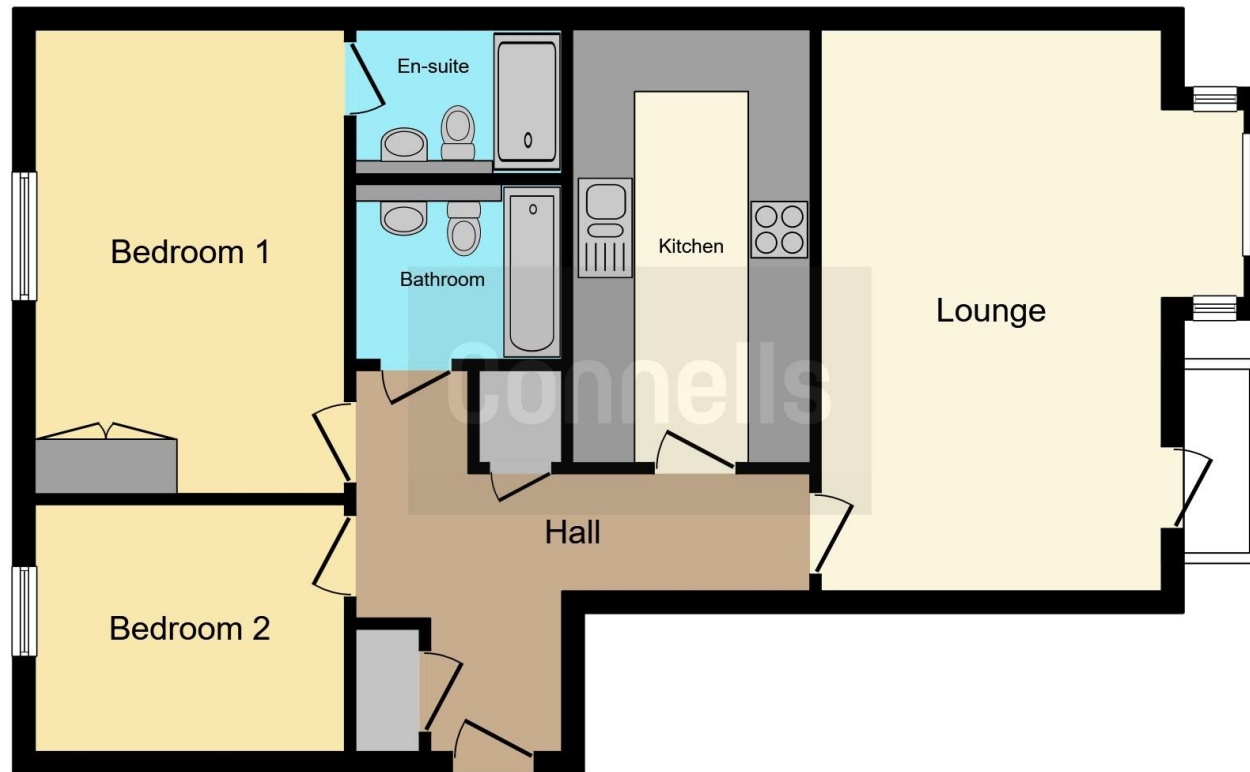
Feature

Balcony with green views.









This floor plan is for illustrative purposes only. It is not drawn to scale. Any measurements, floor areas (including any total floor area), openings and orientation are approximate. No details are guaranteed, they cannot be relied upon for any purpose and they do not form part of any agreement. No liability is taken for any error, omission or misstatement. A party must rely upon its own inspection(s). Powered by www.focalagent.com

To view this property please contact Connells on

T 01926 403308
E warwick@connells.co.uk

14 High Street
 WARWICK CV34 4AP

EPC Rating: C

Tenure: Leasehold

view this property online connells.co.uk/Property/WAR106893

This is a Leasehold property with details as follows; Term of Lease 125 years from 01 Jan 2007. Should you require further information please contact the branch. Please Note additional fees could be incurred for items such as

1. MONEY LAUNDERING REGULATIONS Intending purchasers will be asked to produce identification documentation at a later stage and we would ask for your co-operation in order that there will be no delay in agreeing the sale. 2. These particulars do not constitute part or all of an offer or contract. 3. The measurements indicated are supplied for guidance only and as such must be considered incorrect. Potential buyers are advised to recheck measurements before committing to any expense. 4. We have not tested any apparatus, equipment, fixtures, fittings or services and it is in the buyers interest to check the working condition of any appliances.

Connells Residential is registered in England and Wales under company number 1489613, Registered Office is Cumbria House, 16-20 Hockliffe Street, Leighton Buzzard, Bedfordshire, LU7 1GN. VAT Registration Number is 500 2481 05.



See all our properties at www.connells.co.uk | www.rightmove.co.uk | www.zoopla.co.uk

Property Ref: WAR106893 - 0005