



Connells

Andrews Close
Warwick



Property Description

This luxury apartment in brief comprises, entrance hall, spacious lounge with plenty of light and sliding doors leading to the balcony, kitchen with integrated appliances, light and airy primary bedroom with an ensuite, a second double bedroom and a modern family bathroom. The property further benefits from secure and gated private parking. The balcony offers an excellent space to put a table and chairs and admire the views of the River Leam!

Andrews Close is well located for accessing local shops and amenities, it is only a short walk to the Tesco superstore, pubs, restaurants and more! The location is also perfect for schooling, Emscote Infant School is Ofsted rated outstanding and is only a short walk away as well as Myton School Ofsted rated good.

The location is perfect for national commuters as is only a short drive to the A46, M40 and Warwick Parkway park and ride train line for frequent visitors to London.

The property is within a short 5 minute drive or 25 minute walk of Warwick Town Centre and its famous Warwick Castle. Warwick is a market town which offers a great selection of High Street & independent shops as well as a wide range of restaurants, bars and coffee shops. Warwick is a lively town which hosts an annual food and drink festival, weekend markets and other local events. The property is also ideal for easy access into Leamington Spa and all of its shops and amenities.

Entrance Hall

Store cupboard, and cupboard housing water tank.

Lounge

20' 8" x 13' (6.30m x 3.96m)

French doors with balcony with views of the river and double glazed window to rear and side.

Kitchen

13' 1" x 7' 9" (3.99m x 2.36m)

Fitted with a range of wall and base units with work surface over, oven, hob and extractor fan, dishwasher, fridge freezer and washer dryer. Spotlights.

Bedroom One

12' 10" x 12' 7" (3.91m x 3.84m)

Double glazed window to side, carpeted flooring.

Ensuite

Shower, WC, wash hand basin, tiled flooring and walls, chrome towel rail and double glazed window to side.

Bedroom Two

10' 5" x 6' 6" and recess (3.17m x 1.98m and recess)

Double glazed window to side, carpeted flooring.

Bathroom

Shower over bath, WC, wash hand basin, tiled walls and flooring, chrome towel rail and spotlights.

Rear

Balcony with views of the river.

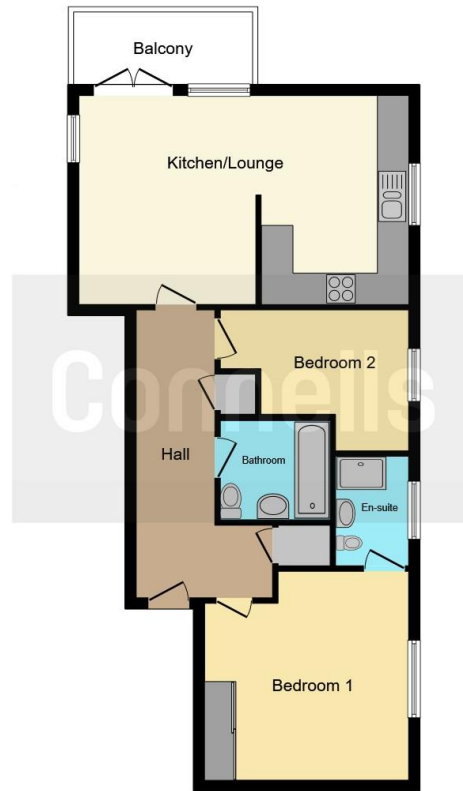
Parking

Allocated parking for one car.









This floor plan is for illustrative purposes only. It is not drawn to scale. Any measurements, floor areas (including any total floor area), openings and orientation are approximate. No details are guaranteed, they cannot be relied upon for any purpose and they do not form part of any agreement. No liability is taken for any error, omission or misstatement. A party must rely upon its own inspection(s). Powered by www.focalagent.com

To view this property please contact Connells on

T 01926 403308

E warwick@connells.co.uk

14 High Street
WARWICK CV34 4AP

EPC Rating: D

Tenure: Leasehold

view this property online connells.co.uk/Property/WAR106792

This is a Leasehold property with details as follows; Term of Lease 125 years from 01 Jan 2016. Should you require further information please contact the branch. Please Note additional fees could be incurred for items such as

1. MONEY LAUNDERING REGULATIONS Intending purchasers will be asked to produce identification documentation at a later stage and we would ask for your co-operation in order that there will be no delay in agreeing the sale. 2. These particulars do not constitute part or all of an offer or contract. 3. The measurements indicated are supplied for guidance only and as such must be considered incorrect. Potential buyers are advised to recheck measurements before committing to any expense. 4. We have not tested any apparatus, equipment, fixtures, fittings or services and it is in the buyers interest to check the working condition of any appliances.

Connells Residential is registered in England and Wales under company number 1489613, Registered Office is Cumbria House, 16-20 Hockliffe Street, Leighton Buzzard, Bedfordshire, LU7 1GN. VAT Registration Number is 500 2481 05.



See all our properties at www.connells.co.uk | www.rightmove.co.uk | www.zoopla.co.uk

Property Ref: WAR106792 - 0002