



Connells

Craig Cottage School Lane
Priors Marston Southam



Property Description

Introducing a stunning 4-bedroom cottage crafted from locally source natural stone, this home embodies sustainable living at its finest. With zero reliance on fossil fuels, it offers an off-grid power capability, leveraging solar power and battery storage for a truly self-sufficient energy solution. Say goodbye to high heating costs as the air source heat pump, underfloor heating, and premium insulation provide efficient warmth throughout the seasons.

Step into the fully loaded kitchen featuring exquisite granite worktops, NEF appliances & a utility room equipped with a washer & tumble dryer. Rest easy knowing your home is protected by a modern Internet-based CCTV and alarm system, ensuring your peace of mind. The property boasts 3-phase electrics & an exceptional electric vehicle charging system, catering to the needs of environmentally conscious residents.

Stay connected with the internal home data network & enjoy the convenience of a TV distribution system. Marvel at the oak gallery staircase with glass side panels, offering a breathtaking 270-degree view from the landing area.

What sets this property apart is the unique opportunity it presents. Don't miss out on the chance to own this exceptional, sustainable retreat that combines modern amenities with an environmentally conscious lifestyle.

Disclaimer

The images, dimensions and floorplans used throughout this website are indicative only. In the majority of cases, they will be illustrations, computer generated images (CGI's) or photographs of the area. Also specification could change at the discretion of the developer. For accurate information, please contact the Connells 01926 815500.



Additional Features

Hard Wired Ring Doorbell with internal chime unit.

WiFi Smart Heating using room by room independent temperature control both locally and remotely.

Ultra-energy efficient ASHP Panasonic system with super-sized 400ltr hot water unvented cylinder storage system.

Modern remote keypad Intruder Alarm System

High resolution, Day/night CCTV system with digital video recorder and remote app control for viewing on any smart device Worldwide. View live images & recorded playback locally or from anywhere Worldwide.

Entire home under wifi control so all light switches controlled via an app and local switch. Turn lights on/off from anywhere in the world!

Off Grid power capability with high powered battery storage system for free Green energy.

3 phase Super EV charger for 22kwh ultra-fast home EV charging, usually only available at service stations or business premises.

Nespresso coffee station.

2 separate large Neff Ovens.

1 Neff induction Hob.

Hotpoint Washing Machine

Hotpoint Tumble Dryer

Boiling Water / Filtered Water Kitchen Tap

Ethernet patch panel for Ethernet throughout the home for high speed internet as well as wifi.

App controlled external lighting around entire elevations of the home.

BT connection already made.

TV aerial with TV distribution system to every bedroom and both family rooms.

Coffee machine station point.

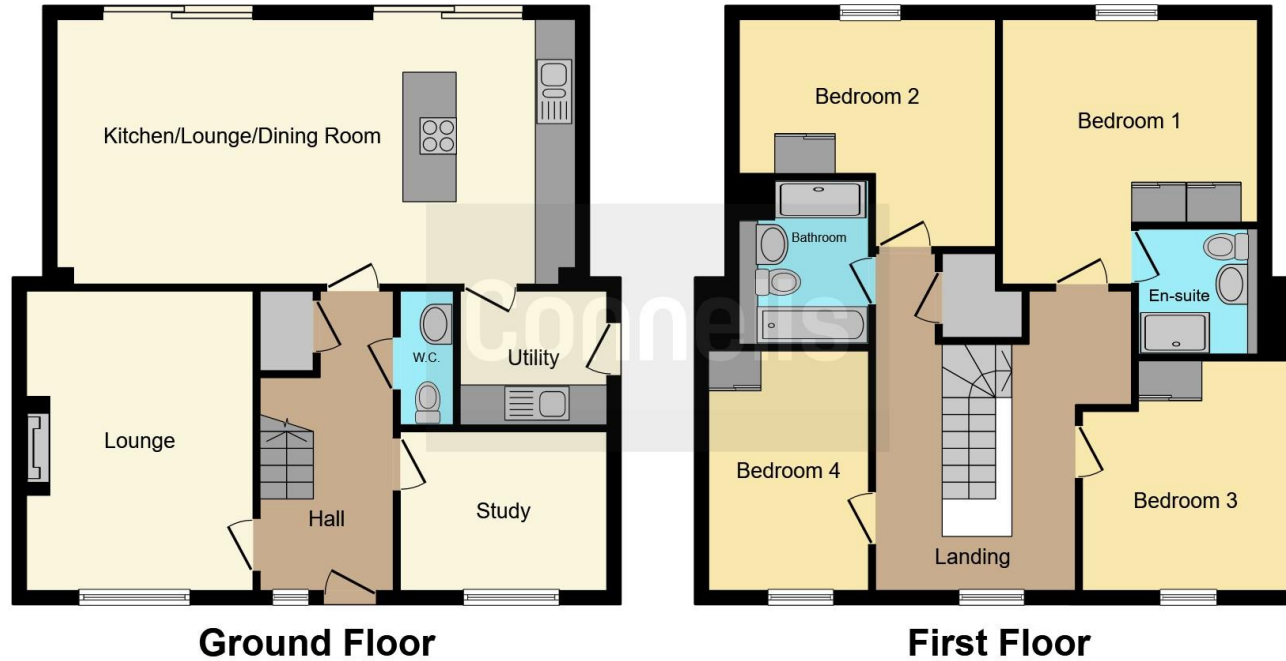
Wine cooler.

Dishwasher.









This floor plan is for illustrative purposes only. It is not drawn to scale. Any measurements, floor areas (including any total floor area), openings and orientation are approximate. No details are guaranteed, they cannot be relied upon for any purpose and they do not form part of any agreement. No liability is taken for any error, omission or misstatement. A party must rely upon its own inspection(s). Powered by www.focalagent.com

To view this property please contact Connells on

T 01926 815500
E southam@connells.co.uk

84 Coventry Street
 SOUTHAM CV47 0EA

EPC Rating: A

view this property online connells.co.uk/Property/STH104423

Tenure: Freehold



1. MONEY LAUNDERING REGULATIONS Intending purchasers will be asked to produce identification documentation at a later stage and we would ask for your co-operation in order that there will be no delay in agreeing the sale. 2. These particulars do not constitute part or all of an offer or contract. 3. The measurements indicated are supplied for guidance only and as such must be considered incorrect. Potential buyers are advised to recheck measurements before committing to any expense. 4. We have not tested any apparatus, equipment, fixtures, fittings or services and it is in the buyers interest to check the working condition of any appliances.

Connells Residential is registered in England and Wales under company number 1489613, Registered Office is Cumbria House, 16-20 Hockliffe Street, Leighton Buzzard, Bedfordshire, LU7 1GN. VAT Registration Number is 500 2481 05.

See all our properties at www.connells.co.uk | www.rightmove.co.uk | www.zoopla.co.uk

Property Ref: STH104423 - 0007

Awaiting Photograph