



Connells

Chimney Crescent
Bishops Itchington SOUTHAM

Chimney Crescent Bishops Itchington SOUTHAM CV47 2EH

for sale offers over
£250,000



Property Description

Connells are delighted to bring to market this well-presented and generously sized TWO BEDROOM SEMI-DETACHED HOME ideally situated on the popular Modern Development In the sought after village of BISHOPS ITCHINGTON. The property itself briefly comprises of a lounge, kitchen, cloakroom, landing, TWO BEDROOMS, bathroom, PRIVATE REAR GARDEN and DRIVEWAY with OFF-STREET parking.

The well-established village of Bishops Itchington is conveniently located on the B4451 for commuting into Gaydon, Rugby, Coventry, Banbury, Daventry, Leamington Spa and Warwick where you will find extensive shopping facilities. Motorway links are provided by the M40 Junction 12, easy access to the M1 as well as rail links from Leamington Spa, Coventry, Rugby and Banbury into London and Birmingham and reliable local bus services.

Bishops Itchington has a thriving social and community spirit and offers a Co-op, newsagents, post office, village shop, doctor's surgery, pub, social club, fish and chip takeaway, hairdressers, St Michael's Church, Ladybirds Pre School, Bishops Itchington Primary School, Recreational facilities and a Community/Youth Centre. There is also the Bishop's Itchington Memorial Hall and the Blue Butterfly Community Cafe which operates from the community centre.

Approach

Situated in the very popular village of Bishops Itchington with a paved footpath leading to open canopy porch and glazed panel front door, lawn fore garden. Allocated parking for two cars directly to the side of the property.

Entrance Hall

Door to the front aspect, stairs rising to the first floor, radiator and carpeted floor.

Cloakroom

Double glazed window to the side aspect. Fitted suite with low level WC. Wash hand basin, radiator and extractor fan.

Lounge

13' 1" x 12' 10" (3.99m x 3.91m)

Double glazed double doors to the rear aspect. Radiator, television point and storage cupboard.

Kitchen

10' 6" x 5' 9" (3.20m x 1.75m)

Double glazed window to the front aspect. Fitted with a range of wall and base units with surfaces over, incorporating one and half bowl sink with drainer unit, integrated electric oven, and gas hob cooker hood over. Integrated fridge/freezer and dish washer, space and plumbing for washing machine, part tiled walls, radiator, Antico flooring and a cupboard housing combi boiler.

First Floor Landing

Double glazed window to the side aspect.
Doors to bedrooms and bathroom.

Bedroom One

10' 11" plus wardrobe x 8' 5" (3.33m plus wardrobe x 2.57m)

Double glazed windows to the front aspect,
radiator and carpet to floor.

Bedroom Two

10' 10" plus wardrobe x 8' 3" (3.30m plus wardrobe x 2.51m)

Double glazed windows to the rear aspect, a
radiator, built in cupboard and access to loft
space.

Bathroom

Fitted with a suite comprising of panel bath
with shower attachment over, low level WC,
wash hand basin, fully tiled and radiator and
extractor fan.

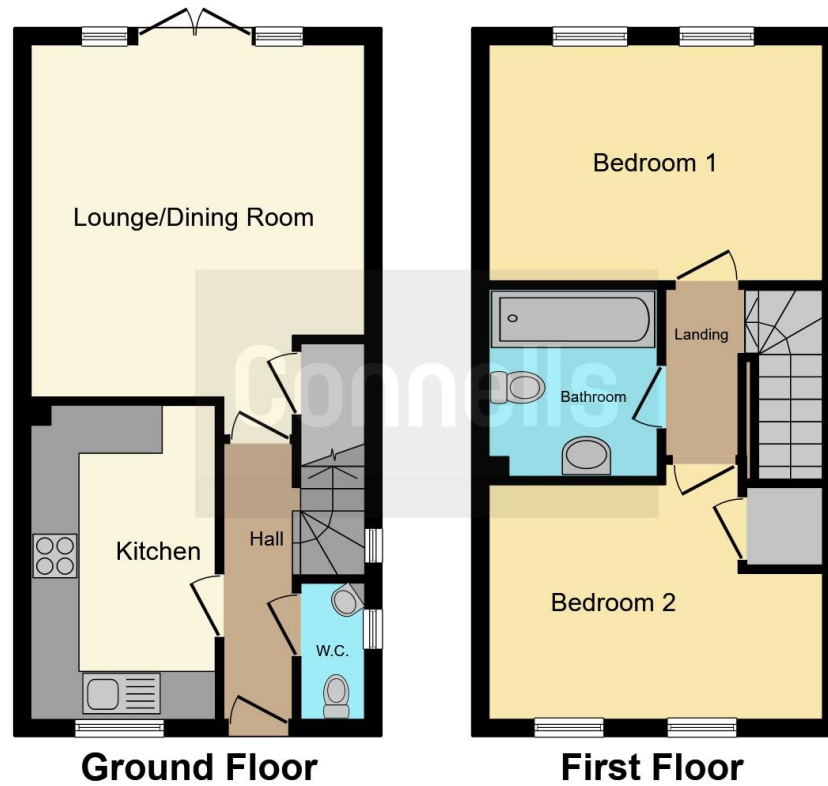
Rear Garden

Enclosed with timber fencing with paved path
leading to wooden shed. Mainly laid lawn,
Pedestrian gated access and a paved patio
adjacent to the property.









This floor plan is for illustrative purposes only. It is not drawn to scale. Any measurements, floor areas (including any total floor area), openings and orientation are approximate. No details are guaranteed, they cannot be relied upon for any purpose and they do not form part of any agreement. No liability is taken for any error, omission or misstatement. A party must rely upon its own inspection(s). Powered by www.focalagent.com

To view this property please contact Connells on

T 01926 815500
E southam@connells.co.uk

84 Coventry Street
 SOUTHAM CV47 0EA

EPC Rating: B

Tenure: Freehold

view this property online connells.co.uk/Property/STH104318



1. MONEY LAUNDERING REGULATIONS Intending purchasers will be asked to produce identification documentation at a later stage and we would ask for your co-operation in order that there will be no delay in agreeing the sale. 2. These particulars do not constitute part or all of an offer or contract. 3. The measurements indicated are supplied for guidance only and as such must be considered incorrect. Potential buyers are advised to recheck measurements before committing to any expense. 4. We have not tested any apparatus, equipment, fixtures, fittings or services and it is in the buyers interest to check the working condition of any appliances.

Connells Residential is registered in England and Wales under company number 1489613, Registered Office is Cumbria House, 16-20 Hockliffe Street, Leighton Buzzard, Bedfordshire, LU7 1GN. VAT Registration Number is 500 2481 05.

See all our properties at www.connells.co.uk | www.rightmove.co.uk | www.zoopla.co.uk

Property Ref: STH104318 - 0003