

# HARDIMANS



**29 Lorne Park Road**  
, Lowestoft, NR33 0RD  
**£175,000**



## 29 Lorne Park Road, Lowestoft, Suffolk, NR33 0RD

Welcome to this charming end terrace house located on Lorne Park Road in the picturesque town of Lowestoft. This delightful property boasts two reception rooms, three good size bedrooms, and a well-appointed bathroom, making it the perfect family home.

As you step inside, you'll be greeted by the lovely decorations that adorn this home, creating a warm and inviting atmosphere. This is an entrance hall style house which adds a touch of character and charm, making it a truly unique find.

One of the standout features of this property is its proximity to the beach, offering you the opportunity to enjoy leisurely strolls along the sandy shores whenever you please.

Don't miss out on the chance to make this house your home and enjoy all that coastal living has to offer. Contact us today to arrange a viewing and experience the charm of this lovely property for yourself.

### **UPVC double glazed door to:-**

#### **SPACIOUS ENTRANCE HALL**

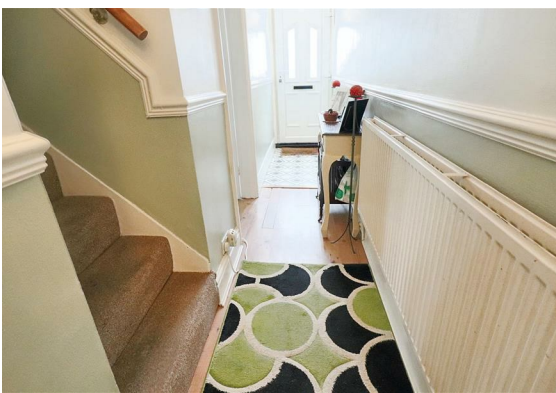
part laminate flooring, double radiator, dado rail, electric meters and fuse box, stairs to first floor.

#### **FRONT SITTING ROOM**

with bay window, light oak effect upvc double glazing, attractive ornamental fireplace, radiator, laminate flooring, dado rail.

#### **LIVING/DINING ROOM**

fireplace, laminate flooring, light oak effect upvc french doors to rear patio and garden, understairs store cupboard.





### **KITCHEN**

fitted in a range of base and wall units in contrasting colours, 4 burner ceramic hob, oven/grill, stainless steel splashback and canopy (not working), recess and plumbing for automatic washing machine, space for upright fridge freezer, light oak upvc double glazed window and upvc side door.

### **BATHROOM**

cased bath, hot and cold shower mixer, pedestal washbasin, low level wc, part tiled walls, radiator, extractor fan, light oak effect upvc double glazing.

### **STAIRS TO FIRST FLOOR AND LANDING**

access to roof void.

### **BEDROOM 1**

light oak effect upvc double glazed window, radiator, built-in wardrobe cupboard, feature cast iron fireplace.

### **BEDROOM 2**

light oak effect upvc double glazed window, radiator, feature cast iron fireplace, door to:-

### **BEDROOM 3**

2 windows with light oak upvc double glazing, radiator. Note: The bedroom also has a low level wc and personal washbasin.

### **OUTSIDE**

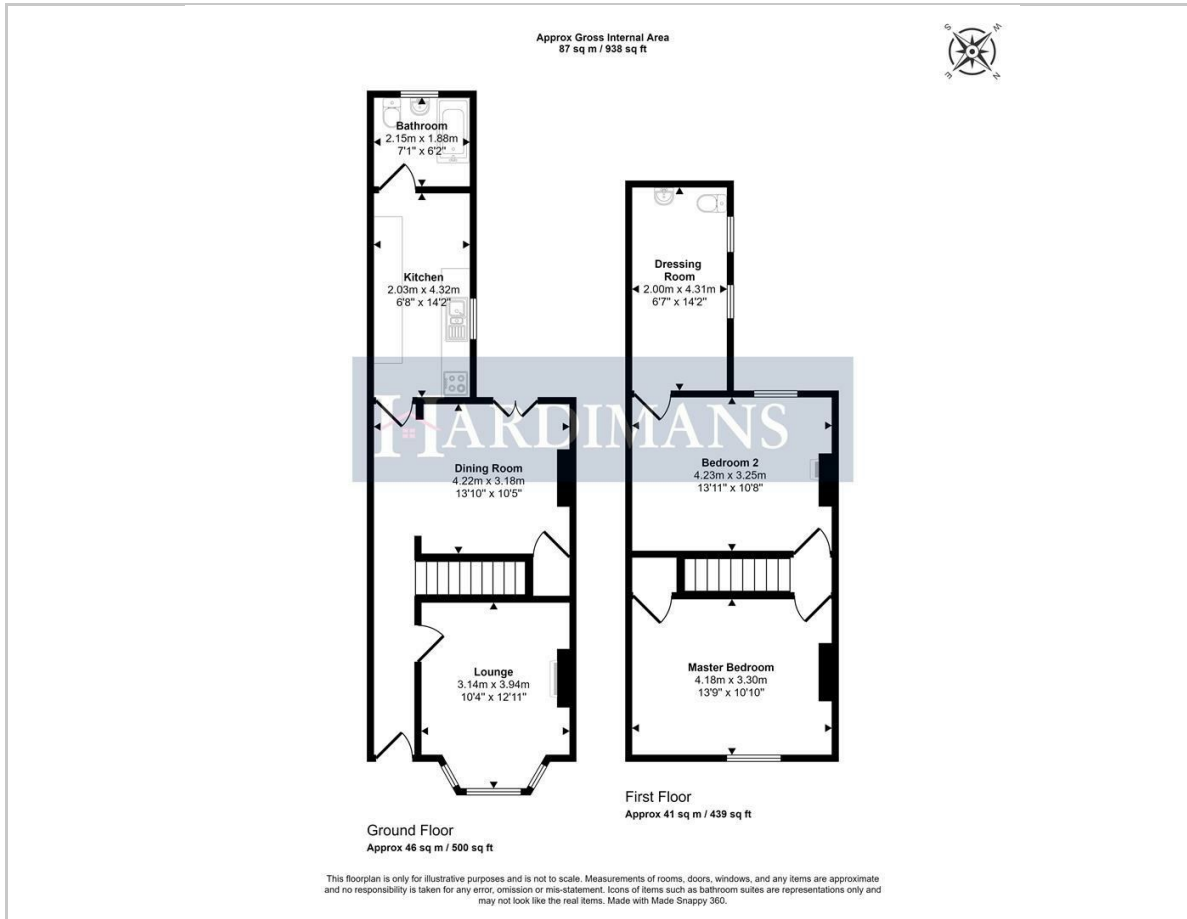
To the front the property has a paved area with an attractive wrought iron railings, brick pavier pathway. To the rear, fully enclosed good size patio gardens with stepped areas, external water tap, side gate providing pedestrian access, shed (included).

### **COUNCIL TAX BAND**

A



## Floor Plan

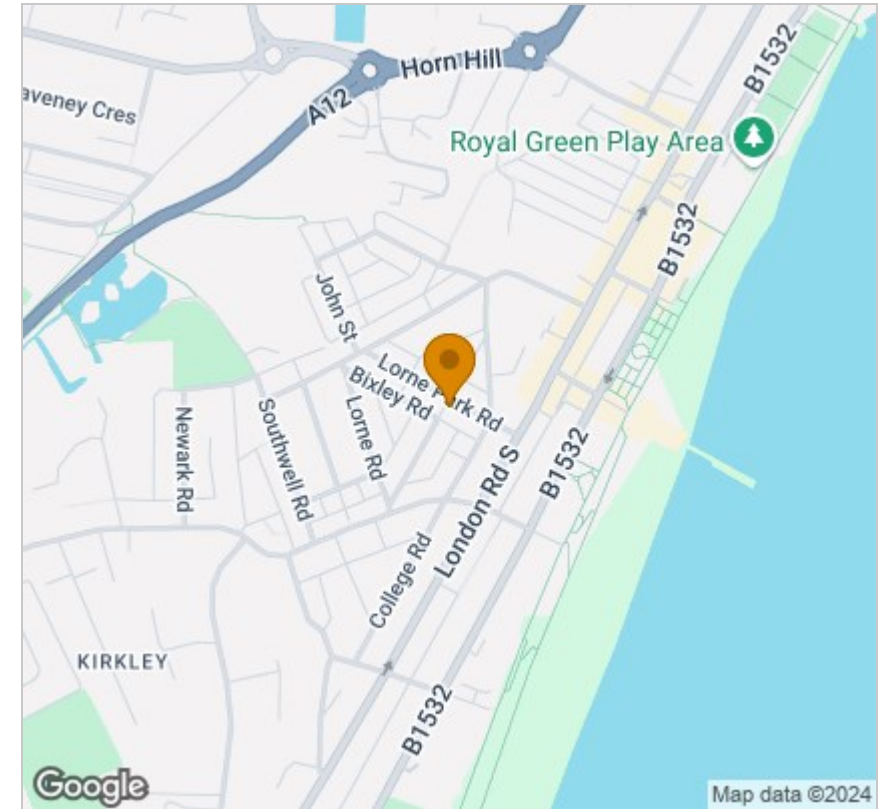


## Viewing

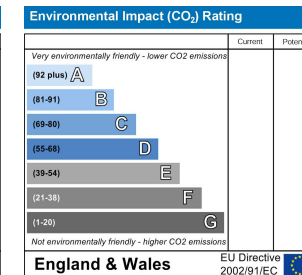
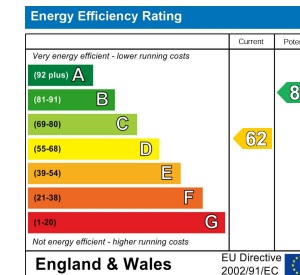
Please contact our Lowestoft Office on 01502 515999 if you wish to arrange a viewing appointment for this property or require further information.

These particulars, whilst believed to be accurate are set out as a general outline only for guidance and do not constitute any part of an offer or contract. Intending purchasers should not rely on them as statements of representation of fact, but must satisfy themselves by inspection or otherwise as to their accuracy. No person in this firm's employment has the authority to make or give any representation or warranty in respect of the property.

## Area Map



## Energy Efficiency Graph



134 London Road North, Lowestoft, Suffolk NR32 1HB  
**Tel: 01502 515999**  
[www.hardimans.co.uk](http://www.hardimans.co.uk) E: [info@hardimans.co.uk](mailto:info@hardimans.co.uk)

