

HARDIMANS



195 Victoria Road
Oulton Broad, Lowestoft, NR33 9LP
£280,000



**195 Victoria Road, Oulton
Broad, Lowestoft, Suffolk,
NR33 9LP**

Welcome to Victoria Road, Lowestoft - a charming location for this exceptional terraced house. This unusually large property boasts two reception rooms, perfect for entertaining guests or simply relaxing with your family. With four spacious bedrooms, there's plenty of room for everyone to have their own space.

The kitchen has been extended to include a light and airy breakfast room, providing ample space for cooking up delicious meals and hosting gatherings. The superb wet room adds a touch of luxury to the property, offering a modern and convenient bathing experience.

Step outside into the fantastic garden, a tranquil oasis where you can unwind after a long day or enjoy a morning coffee on the expansive patio. The garage and connected store room provides convenient storage space for your vehicles or outdoor equipment, adding to the practicality of this wonderful home.

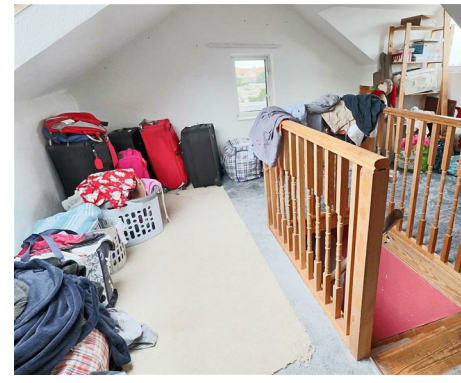
Don't miss out on the opportunity to make this property your own - with its generous living spaces, modern amenities, and beautiful garden, it's a true gem in a desirable location.

UPVC double glazed door to:-

ENTRANCE HALL

radiator, concealed by radiator cabinet, stairs to first floor.





WET ROOM

fully tiled walls and floor, low level wc, pedestal washbasin, Victorian style radiator/towel rail, Triton shower unit.

INNER HALLWAY

STUDY

upvc double glazed window, double radiator, access to roof void.

STAIRS TO FIRST FLOOR AND LANDING

MASTER BEDROOM

upvc double glazed window, radiator, cupboard and stairway access to:-

ATTIC ROOM/BEDROOM 4

Fantastic attic space which could easily provide a 4th bedroom with dormer, velux window & window.

Note: The attic room is currently accessed via bedroom 1, but with the provision of a stud wall in bedroom 2, this would create a hallway & separate access, if so required.

BEDROOM 2

upvc double glazed window, radiator.

BATHROOM

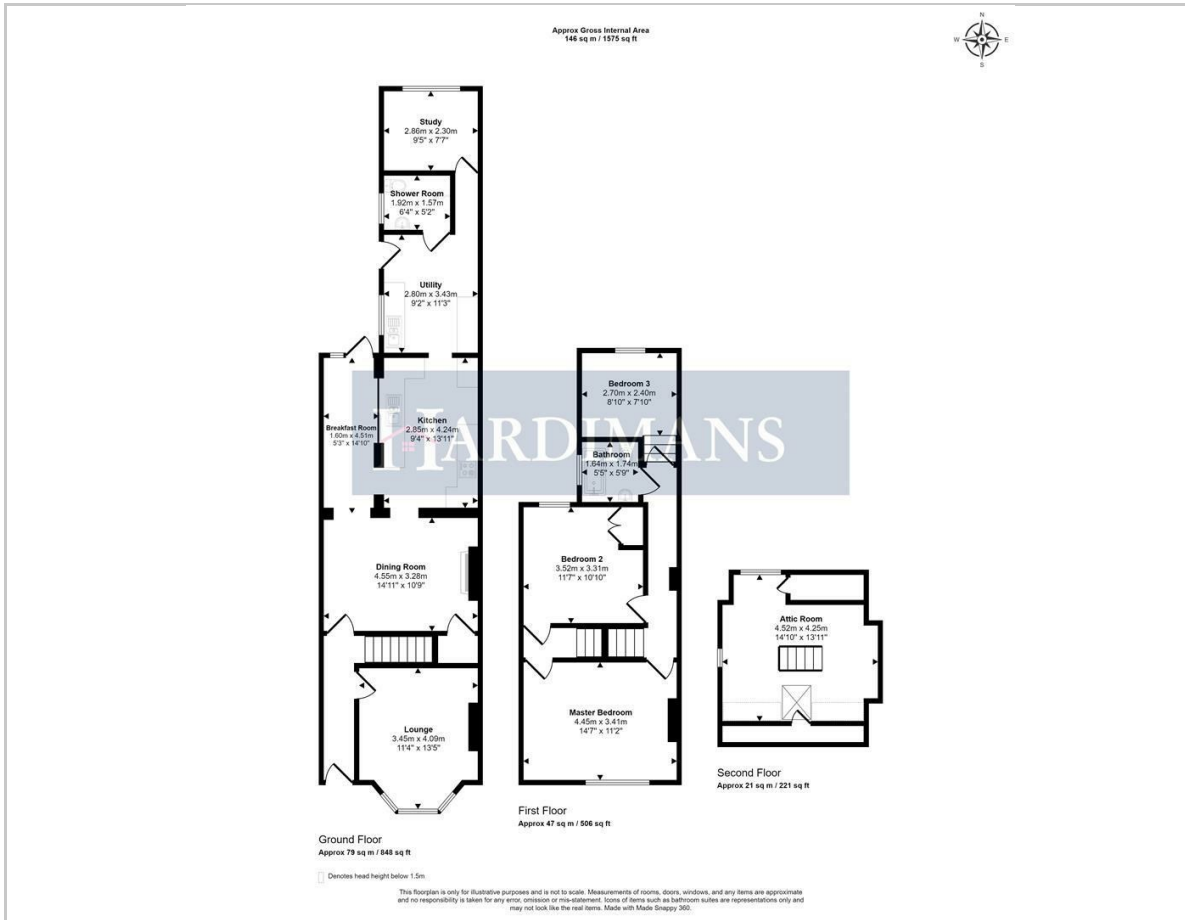
with part sunken bath, low level wc, pedestal washbasin, part tiled walls, upvc opaque glazed window.



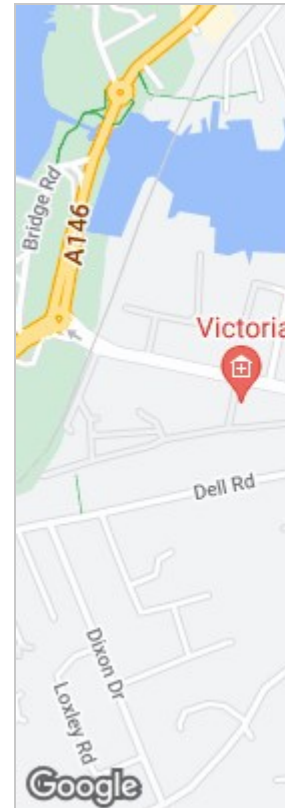




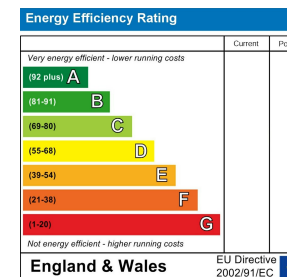
Floor Plan



Area Map



Energy Efficiency



Viewing

Please contact our Lowestoft Office on 01502 515999 if you wish to arrange a viewing appointment for this property or require further information.

These particulars, whilst believed to be accurate are set out as a general outline only for guidance and do not constitute any part of an offer or contract. Intending purchasers should not rely on them as statements of representation of fact, but must satisfy themselves by inspection or otherwise as to their accuracy. No person in this firm's employment has the authority to make or give any representation or warranty in respect of the property.



134 London Road North, Lowestoft, Suffolk NR32 1HB

Tel: 01502 515999

www.hardimans.co.uk

E: info@hardimans.co.uk